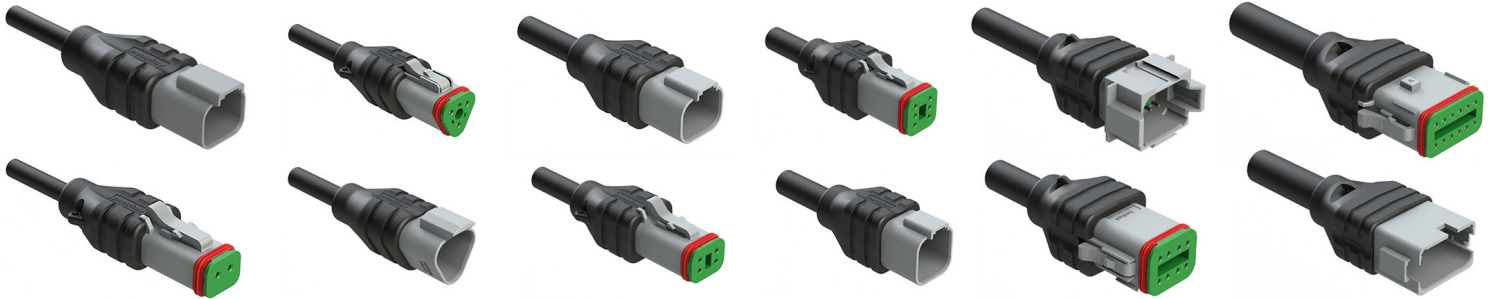


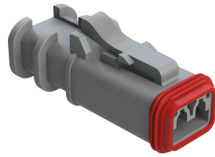


AT ATSeries™ Cable Assemblies

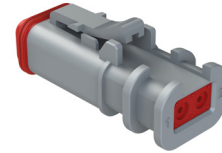


Amphenol Sine Systems' **AT Series™ Cable Assemblies** are an overmolded strain relief option for our high-performance, thermoplastic, cost-effective **AT Series™ Connectors**.

Available in 2, 3, 4, 6, 8 and 12 position Plugs and Receptacles with single-ended cordset standard lengths of 1, 2, 4, 5 and 10 Meters. Contact Customer Service for custom cable length options.



SP Structure+™ AT



Our Plug assemblies feature our **StructurePlus™ AT** design, **an engineered, one-piece, solid body construction specifically designed for cable assembly operations.** The added connector structure results in enhanced connection integrity that is an essential component for connecting cable in harsh environments.

The process utilizes first-quality resins which encapsulate the wire terminations into the connector housing creating a highly functional & compact strain relief to ensure a long service life. Built to exceptional quality standards, the resulting barrier of protection provides **IP68 rated (1M of water for 24 hrs in mated condition)** sealing capability, preventing liquid ingress for a variety of markets such as Heavy Duty, Transportation, Marine, Diagnostic, Military, Alternative Energy and Agricultural.



A ASeries™ Family



Standard products. Custom solutions
Customer Service +1 800 394 7732

Specifications

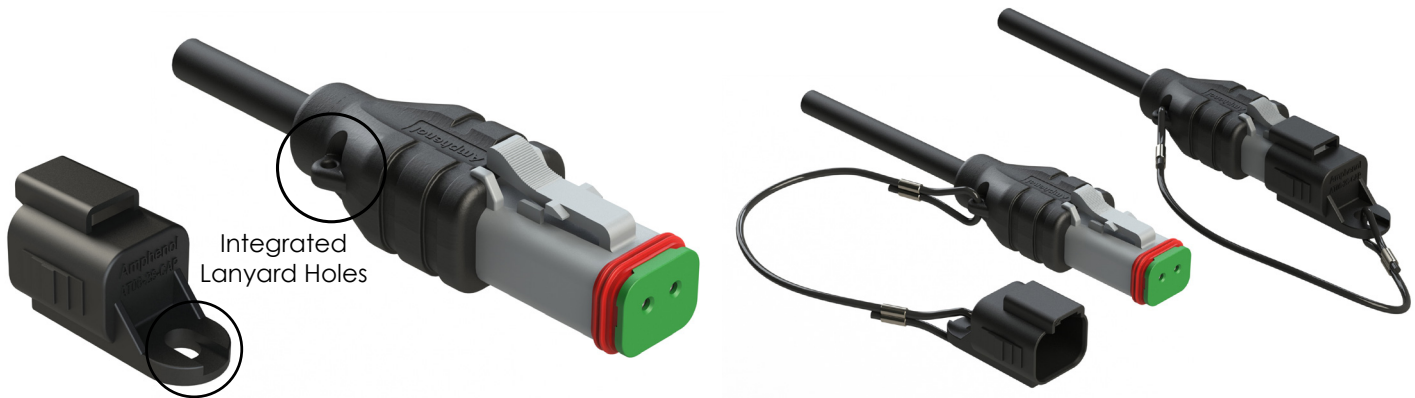
Temperature Range	-40°C to +100°C	
Current Rating @ 25°C Ambient	2 Pos: 15A Max	6 Pos: 10A Max
	3 Pos: 14A Max	8 Pos: 10A Max
	4 Pos: 12A Max	12 Pos: 8A Max
Voltage	300V AC/DC	
Min. Mating Cycles	>100	
Sealing Protection	IP68 (1M of water for 24 hrs in mated condition)	
Housing/Overmold	PA66/Polyamide	
Seals	Silicone Rubber	
Keying Options (8 & 12 pos only)	Key A - Grey, Key B - Black, Key C - Green, Key D - Brown	

Contacts	Size 16, Nickel-plated
RoHS Compliant	All connector materials meet the requirements of the EU Directive 2002/95/EC
Cable Components	18AWG, SRPVC Insulated Conductors 41/34 Bare Copper
Cable Type	TPE, Black
Cable Approvals	AWM 21270, CSA AWM I/II A/B FT4
Cable Resistance	Sunlight and Oil Resistant
RoHS 3 Compliant	All cable materials meet the requirements of the EU Directive 2015/863

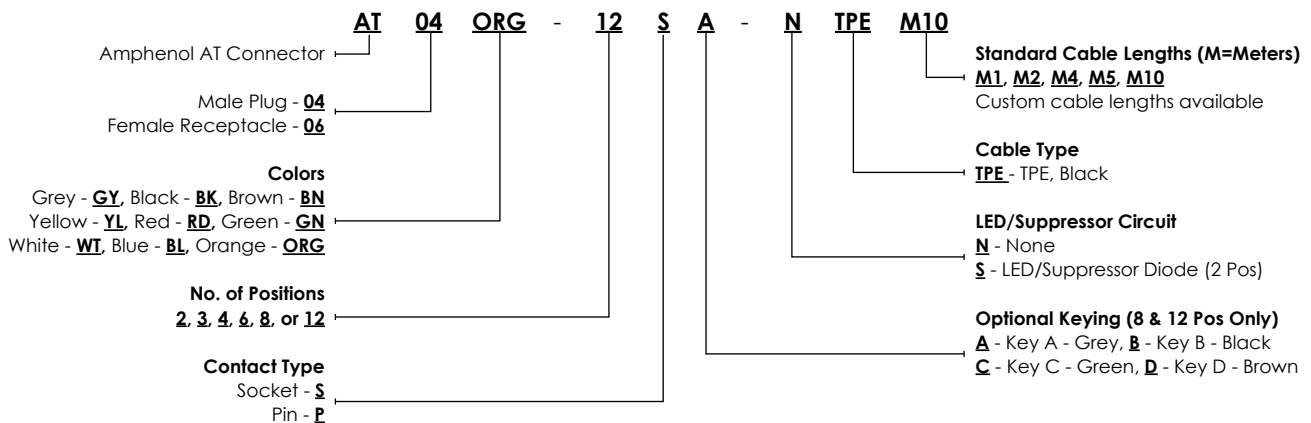
Note: All datasheets containing specifications and wiring diagrams can be found at www.amphenol-sine.com under their specific part numbers.

Key Features

- Enhanced Sealing Protection
- Relieves Stress on Conductors
- Ergonomic Grip Design
- Integrated Lanyard Holes
- Cosmetically Appealing
- Tamper-Proof
- Protective Caps Available for 2, 3, 4, 6, 8 & 12 Position Plugs



AT Series™ Cable Assembly Part Numbering Sequence



AT Series™ Cable Assemblies

Available in M1, M2, M4, M5 and M10 lengths (M = Meters)

Image	Part Number	Description	Base Product Line
	AT04GY-2P-N-TPE-MX	2 Pos, Molded Recep, Black TPE Single-ended Cable Assy, AT Series™, Mates to AT06-2S	AT ATSeries™
	AT06GY-2S-N-TPE-MX	2 Pos, Molded Plug, Black TPE Single-ended Cable Assy, StructurePlus™ AT, Mates to AT04-2P	SP Structure+™ AT
	AT04GY-3P-N-TPE-MX	3 Pos, Molded Recep, Black TPE Single-ended Cable Assy, AT Series™, Mates to AT06-3S	AT ATSeries™
	AT06GY-3S-N-TPE-MX	3 Pos, Molded Plug, Black TPE Single-ended Cable Assy, StructurePlus™ AT, Mates to AT04-3P	SP Structure+™ AT
	AT04GY-4P-N-TPE-MX	4 Pos, Molded Recep, Black TPE, Single-ended Cable Assy, AT Series™, Mates to AT06-4S	AT ATSeries™
	AT06GY-4S-N-TPE-MX	4 Pos, Molded Plug, Black TPE Single-ended Cable Assy, StructurePlus™ AT, Mates to AT04-4P	SP Structure+™ AT
	AT04GY-6P-N-TPE-MX	6 Pos, Molded Recep, Black TPE, Single-ended Cable Assy, AT Series™, Mates to AT06-6S	AT ATSeries™
	AT04GY-6S-N-TPE-MX	6 Pos, Molded Plug, Black TPE Single-ended Cable Assy, StructurePlus™ AT, Mates to AT06-6P	SP Structure+™ AT
	AT04GY-08PX-N-TPE-MX	8 Pos, Molded Recep, Black TPE Single-ended Cable Assy, AT Series™, Mates to AT06-08SA Optional Keying: Keyed A-Grey, Keyed B-Black, Keyed C-Green, Keyed D-Brown	AT ATSeries™
	AT04GY-08SX-N-TPE-MX	8 Pos, Molded Plug, Black TPE Single-ended Cable Assy, StructurePlus™ AT, Mates to AT06-08PA Optional Keying: Keyed A-Grey, Keyed B-Black, Keyed C-Green, Keyed D-Brown	SP Structure+™ AT
	AT04GY-12PX-N-TPE-MX	12 Pos, Molded Recep, Black TPE Single-ended Cable Assy, AT Series™, Mates to AT06-12SA Optional Keying: Keyed A-Grey, Keyed B-Black, Keyed C-Green, Keyed D-Brown	AT ATSeries™
	AT04GY-12SX-N-TPE-MX	12 Pos, Molded Plug, Black TPE Single-ended Cable Assy, StructurePlus™ AT, Mates to AT06-12PA Optional Keying: Keyed A-Grey, Keyed B-Black, Keyed C-Green, Keyed D-Brown	SP Structure+™ AT

Related Items

A A Series™ Caps

Protective Thermoplastic Caps for AT, ATM and ATP Series™ Connectors

Available in 2-12 position (depending on Series)

Amphenol Sine Systems' **A Series™ Caps** are a low-cost alternative to using standard connectors with sealing plugs and provide an optional protective covering for harsh environmental and industrial applications. Fully sealed protective plug & receptacle caps are available for the AT, ATM and ATP Series™.

All caps are IP68 rated (1M of Water for 24 Hrs) when mated.

Potential Applications: Heavy Equipment, Agriculture, Construction, Transportation, Off-Road, Mining, Industrial, Railway, Automotive, Diagnostics, Marine, Water Resistance, Harsh Environments



SP Structure+™ Family

Overmold Compatible Connectors for AT, AT LED, ATHD and ATP Series™ Connectors

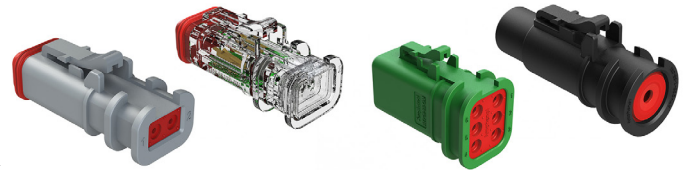
Available in 1, 2, 3, 4, 6, 8 and 12 position

Amphenol Sine Systems' **StructurePlus™ Family** of overmold compatible connectors are an **engineered, one-piece, solid body construction and are specifically designed for cable assembly operations requiring custom molding or shrink tube requirements**. The added connector structure results in enhanced connection integrity that is an essential component for connecting cable in harsh environments.

Key Features

- **StructurePlus™ AT**-2, 3, 4, 6, 8, 12 pos, 13A; **StructurePlus™ AT LED**-2 pos, 13A; **StructurePlus™ ATHD**-1 pos, 25-60A; **StructurePlus™ ATP**-6 pos, 25A
- Engineered one-piece solid body construction, eliminates previously required snap-on-back shell
- Intermatable with industry standard connectors

Potential Applications: Heavy Duty, Transportation, Marine, Diagnostic, Military, Alternative Energy, Agricultural as well as other demanding interconnect applications



For more information, contact: Customer Service, +1 800 394 7732, csr@amphenol-sine.com