

LED MODULE

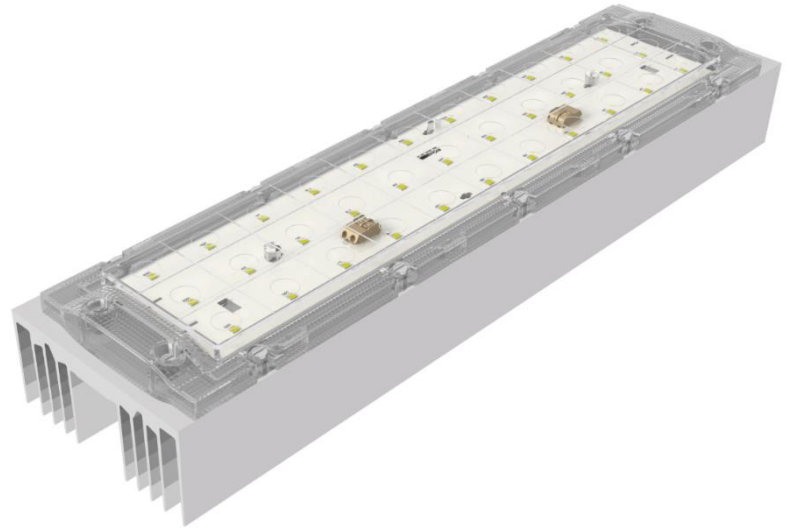
Issue Date	Jan/2019
Issued by	Malassise V.

Applications

- Highbay
- Projectors
- Decorative Poles

Characteristics

- Module Efficacy – up to 132 lm/W
- L70 > 50,000 hours
- CRI > 70 (Typ.72)
- 03 SDCM
- CCTs 2.700K / 4.000K / 5.000K
- 05 years warranty



DRIVE CURRENTS

Parameter	Nominal	Max
LED Module 3R IP DMC	2,100 mA	2,100 mA

MODULE TEMPERATURES

Parameter	Nominal	Max
TJ (temperature at junction point)	60 °C	85 °C

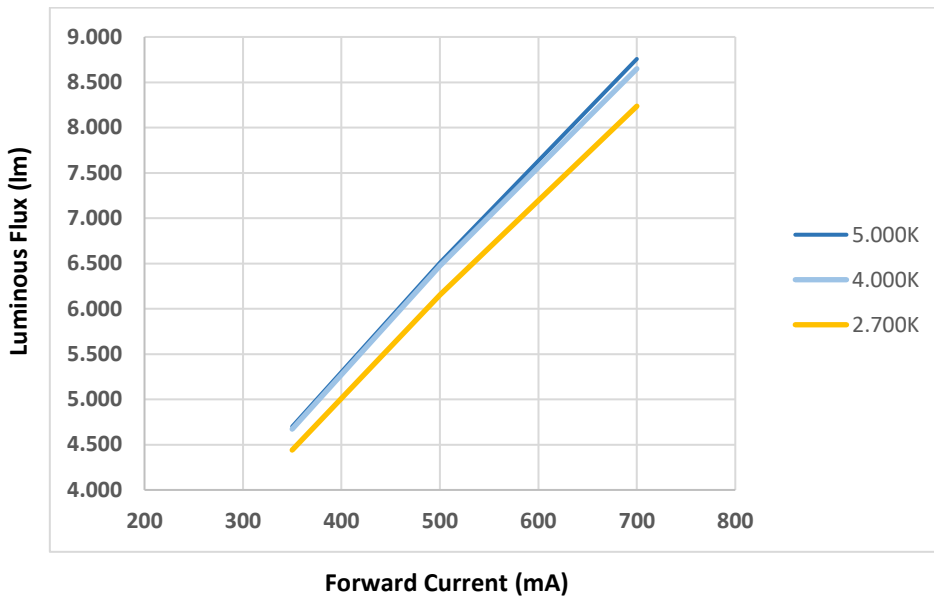
PRODUCT PART NUMBER

ANGLE	2.700 K	4.000 K	5.000 K
90°	80102500100	80102600100	80102700100
60°	80102800100	80102900100	80103000100
84° + 90°	80103100100	80103200100	80103300100

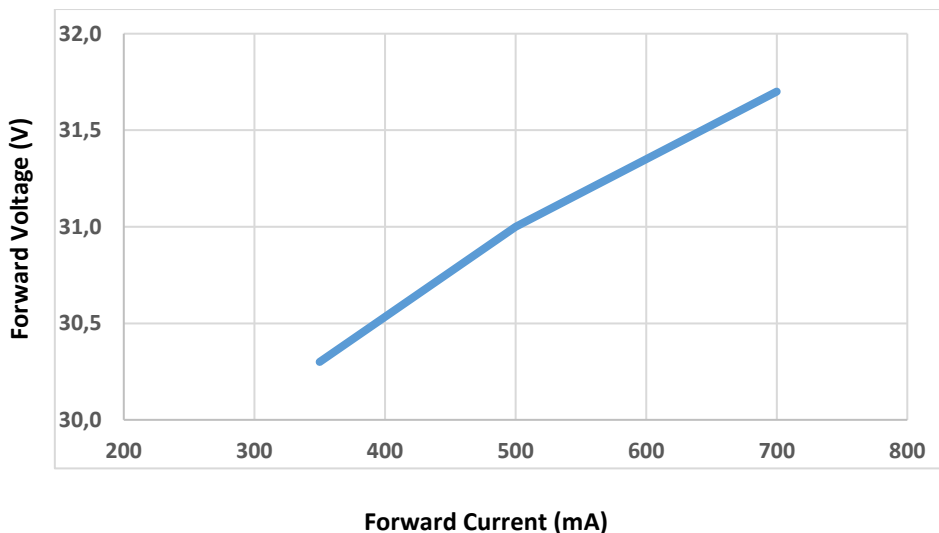
TECHNICAL INFORMATION

CCT	LED Driver Current (mA)	# LEDs	Luminous Flux (lm)*	Forward Voltage (V)	LED Forward Current (mA)	TC (°C)	Power (W)	Efficacy (lm/W)*
2.700 K	2,100	33	8,236	31.7	700	85	66.5	124
4.000 K	2,100	33	8,649	31.7	700	85	66.5	130
5.000 K	2,100	33	8,757	31.7	700	85	66.5	132

Luminous Flux (lm) x Forward Current (mA) (Tj 75°C)



Forward Voltage (V) x Forward Current (mA) (Tj 75°C)

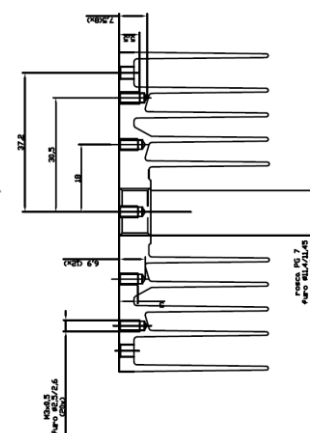
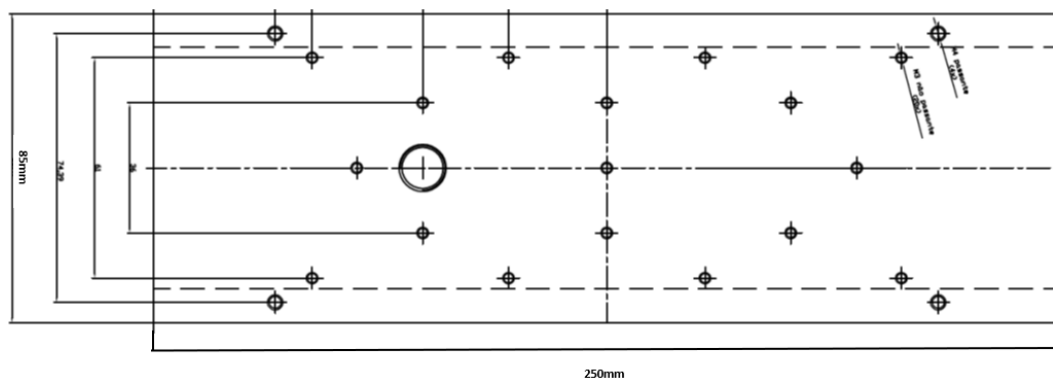


LED TYPE

Manufacturer: Nichia Corporation

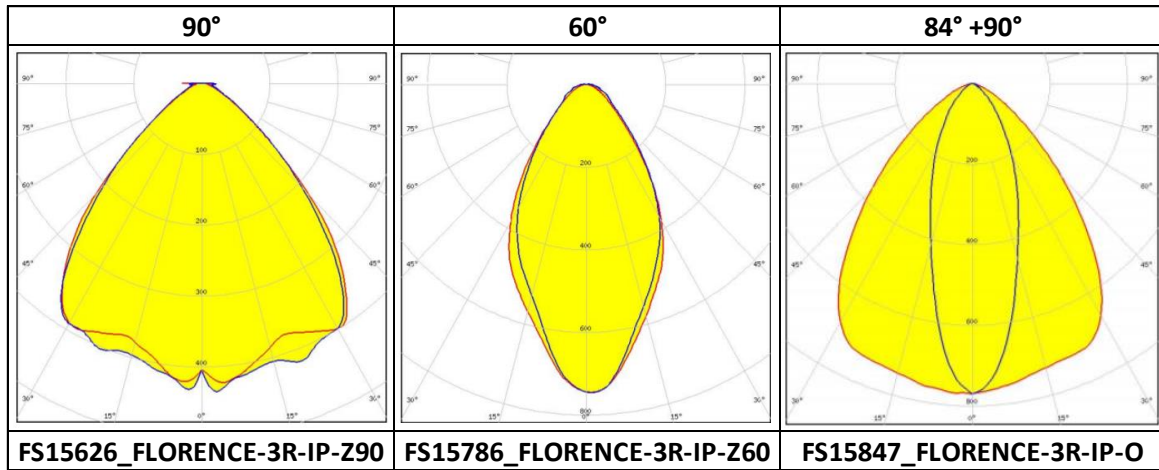
LED Series: E21

MECHANICAL DRAWING



Unit: mm

COMPATIBLE OPTICS



WIRING

Specification item	Value	Unit	Condition
Input wire cross- section	0.25...0.75 18...24	mm ² AWG	Solid wire
Input wire strip length	7.5...8.5	mm	Solid wire
Input wire cross-section	0.33...0.5 20...22	mm ² AWG	Stranded wire
Input wire strip length	7.5...8.5	mm	Stranded wire