

LED MODULE

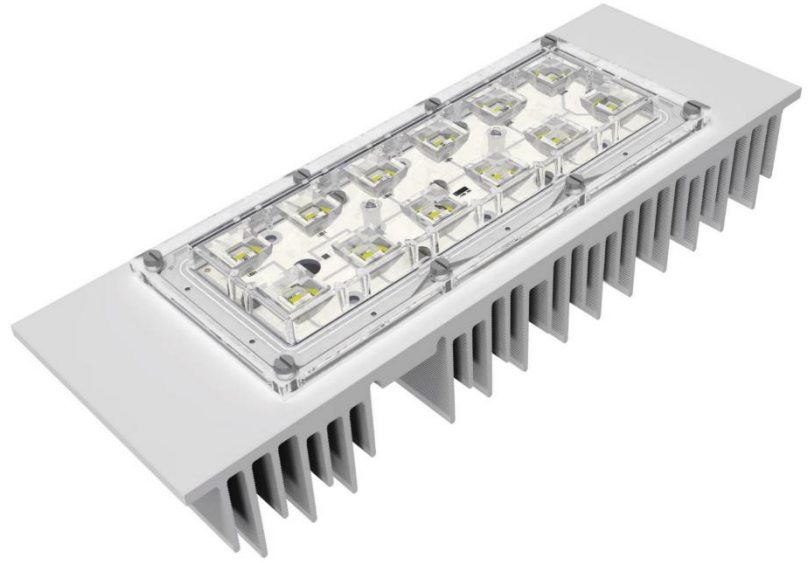
Issue Date	Jan/2019
Issued by	Malassise V.

Applications

- Highbay
- Street Light
- Gas station
- Projectors
- Decorative Poles

Characteristics

- Module Efficacy – up to 133 lm/W
- L70 > 50,000 hours
- CRI > 80 (Typ.85)
- 03 SDCM
- CCTs 2.700K / 4.000K / 5.000K
- 05 years warranty



DRIVE CURRENTS

Parameter	Nominal	Max
LED Module 2X6 IP DMC	1,050 mA	1,250 mA

MODULE TEMPERATURES

Parameter	Nominal	Max
TJ (temperature at junction point)	60 °C	85 °C

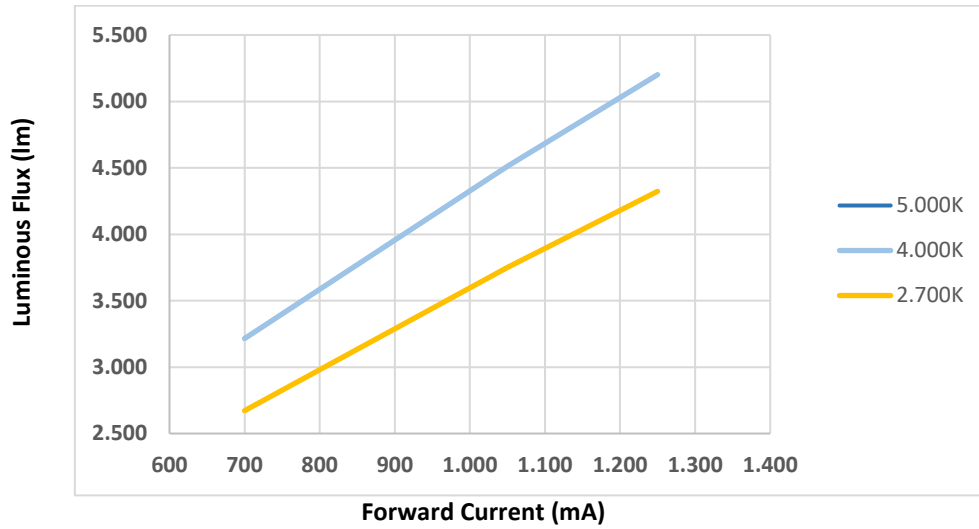
PRODUCT PART NUMBER

ANGLE	2.700 K	4.000 K	5.000 K
85°	80103800100	80103900100	80104000100
51°	80104100100	80104200100	80104300100
13°	80104400100	80104500100	80104600100
24°	80104700100	80104800100	80104900100
26° + 116°	80105000100	80105100100	80105200100

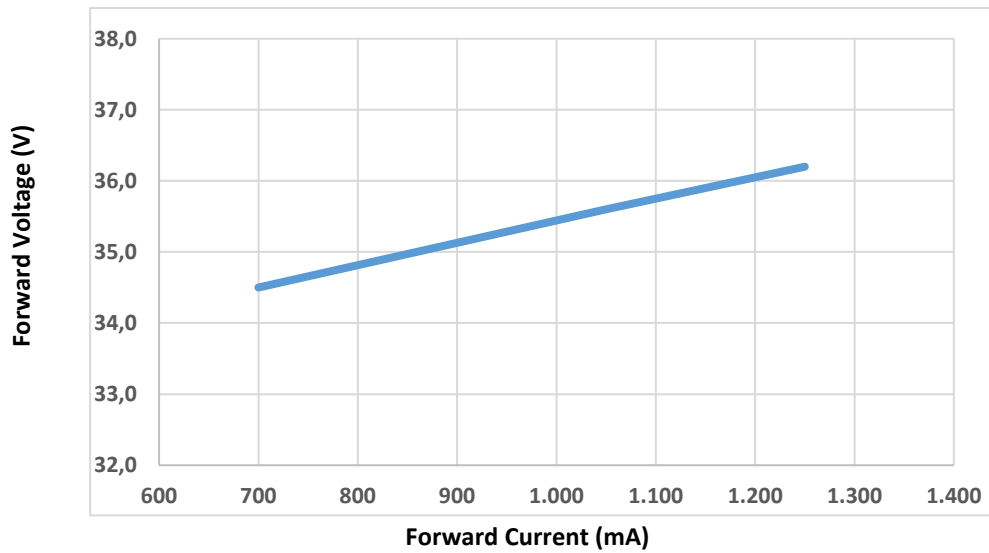
TECHNICAL INFORMATION

CCT	LED Driver Current (mA)	# LEDs	Luminous Flux (lm)*	Forward Voltage (V)	LED Forward Current (mA)	TC (°C)	Power (W)	Efficacy (lm/W)*
2.700 K	1.050	12	3,751	35.6	1,050	85	37.4	100
4.000 K	1.050	12	4,513	35.6	1,050	85	37.4	121
5.000 K	1.050	12	4,513	35.6	1,050	85	37.4	121

Luminous Flux (lm) x Forward Current (mA) (Tj 75°C)



Forward Voltage (V) x Forward Current (mA) (Tj 75°C)

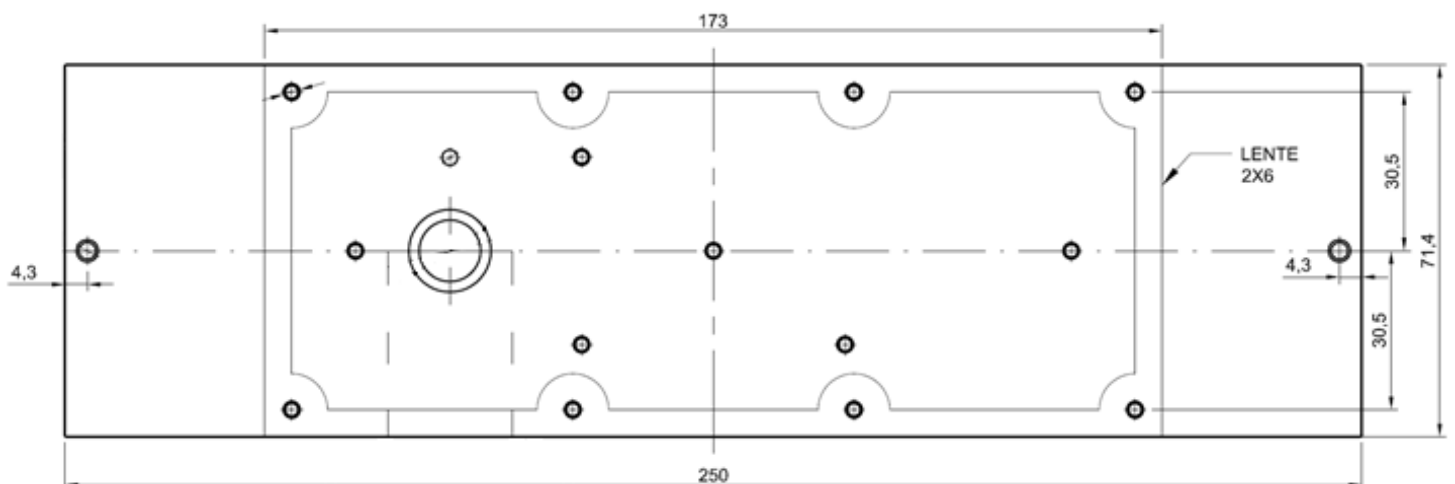


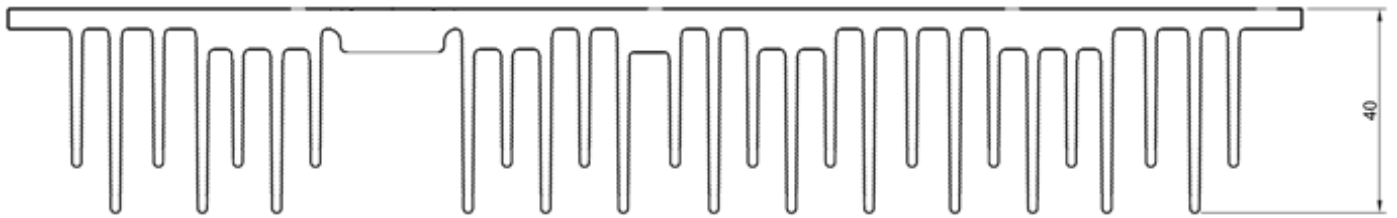
LED TYPE

Manufacturer: Nichia Corporation

LED Series: 757

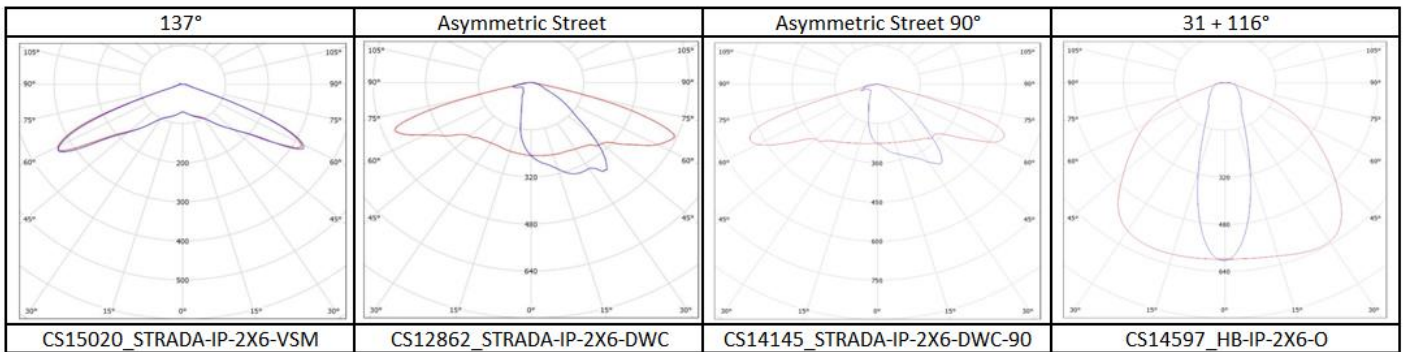
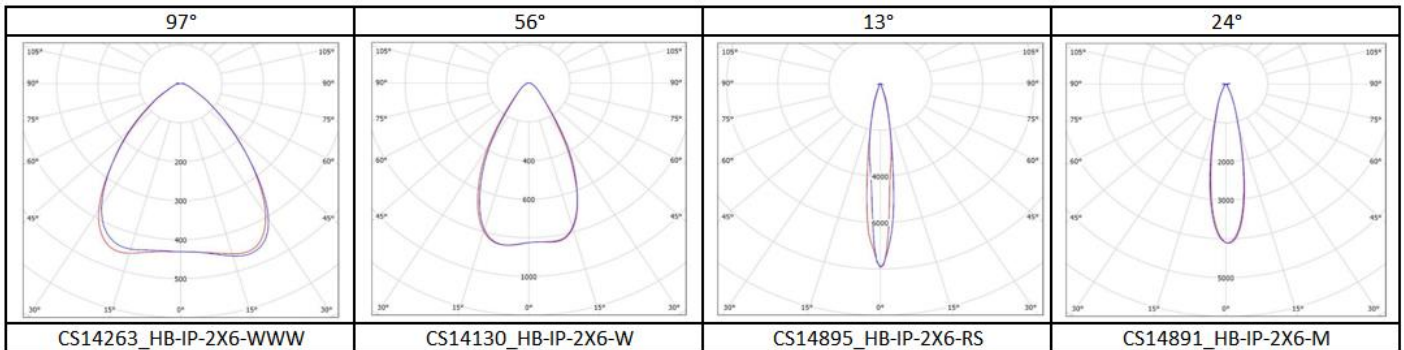
MECHANICAL DRAWING





Unit: mm

COMPATIBLE OPTICS



WIRING

Specification item	Value	Unit	Condition
Input wire cross- section	0.25...0.75 18...24	mm ² AWG	Solid wire
Input wire strip length	7.5...8.5	mm	Solid wire
Input wire cross-section	0.33...0.5 20...22	mm ² AWG	Stranded wire
Input wire strip length	7.5...8.5	mm	Stranded wire