



Product Specification				
	Model: GKIGA1VDGE1S0	Rev. No.	Issued Date.	Page.
		A	2017.Dec.04	1 / 28

Thin-Film-Transistor LCD Module
 Model: GKIGA1VDGE1S0

Acceptance

Solomon Goldentek Display Corp.
NO. 18 Ta-Yeh St., Ta-Fa Industrial Park, Ta-Liao
Hsiang, Kaohsiung Hsien 831, TAIWAN , R.O.C.
 FAX: 886-7-7886800

Approved and Checked by

Approved by	Checked by		Made by
			

Product Specification			
	Model: GKIGA1VDGE1S0	Rev. No.	Issued Date.
		A	2017.Dec.04
			Page.
			3 / 28

Contents

1.	General Description and Features	4
1.1	Features	4
1.2	LCD Module	4
2.	Mechanical Information	4
3.	Electrical Specifications	5
3.1	Absolute Max. Ratings	5
3.2	AC Timing Characteristic of The LCD	6
3.3	Timing Sequence(Timing Chart)	7
3.4	Back-Light Unit	8
4.	Optical Characteristics	9
4.1	Optical characteristic of the LCD	9
5.	I/O Terminal	12
5.1	Pin Assignment (Part No: 300E40-0010RA-G3(Starconn))	12
5.2	Back Light Unit (CN1: Part No: JST:BHSR-02VS-01(N) or equivalent.)	13
5.3	Block Diagram	14
6.	Displayed Color and Input Data	15
7.	Projected Capacitive Touch Panel	16
8.	Reliability Condition	17
9.	Dimensional Outlines	18

Product Specification

	Model: GKIGA1VDGE1S0	Rev. No.	Issued Date.	Page.
		A	2017.Dec.04	4 / 28

1. General Description and Features

GKIGA1VDGE1S0 is a transmissive type color active matrix TFT (Thin Film Transistor) liquid crystal display (LCD) that uses amorphous silicon TFT as a switching device. This model is composed of a TFT-LCD module, a receiver circuit and a back-light unit. Graphics and texts can be displayed on a WXGA 1280(W) x RGB x 800 (H) dots (16:10 aspect ratio) with 16.2M colors. The following table described the features of GKIGA1VDGE1S0.

1.1 Features

- Transmissive and back-light with 36 LEDs are available.
- IPS mode.
- Projected Capacitive Touch Panel
- LVDS Receiver 24 bit Interface.
- RoHS Compliance

1.2 LCD Module

Item	Specification	Unit
Screen Size	10.1 inches	Diagonal
Display Resolution	1280 (H) x 800 (V)	Pixel
Active Area	216.96(H) x 135.6(V)	mm
Outline Dimension	241.96(H) x 175.00 (V) x 8.81 (T)	mm
Display Mode	Normally Black, IPS	--
Pixel Arrangement	R,G,B Vertical Stripe	--
Pixel Size	0.1695 x 0.1695	mm
Surface Treatment	Anti-Glare , Hard -Coating	
Display Color	16.2M	--
Viewing Direction	Full View	--
Input Interface	LVDS Receiver 24 bit Interface	--

2. Mechanical Information

Item	Min.	Typ.	Max.	Unit	Note	
Module Size	Horizontal (H)	(238.96)	(241.96)	(243.96)	mm	
	Vertical (V)	(174.7)	(175.00)	(175.3)	mm	
	Thickness (T)	(8.51)	(8.81)	(9.11)	mm	(1)
Weight	--	(TBD)	--	g	--	

Note (1) Not Include Component. Refer to the Outline Dimension Drawing as attached.

Product Specification

	Model: GKIGA1VDGE1S0	Rev. No.	Issued Date.	Page.
		A	2017.Dec.04	5 / 28

3. Electrical Specifications

3.1 Absolute Max. Ratings

3.1.1 Absolute Ratings of Environment

If the operating condition exceeds the following absolute maximum ratings, the TFT LCD module may be damaged permanently.

(Ta=25±2°C, V_{SS}=GND=0)

Item	Symbol	Min.	Max.	Unit	Note
Storage temperature	T _{STG}	-30	85	°C	(1)
Operating temperature	T _{OPR}	-30	85	°C	(1,2,3)

Note (1) 95 % RH Max. (40 °C ≥ Ta). Maximum wet-bulb temperature at 39 °C or less. (Ta > 40 °C) No condensation.

Note (2) In case of below 0°, the response time of liquid crystal (LC) becomes slower and the color of panel becomes darker than normal one. Level of retardation depends on temperature, because of LC's character

Note (3) Only operation is guaranteed at operating temperature. Contrast, response time, another display quality are evaluated at +25°C.

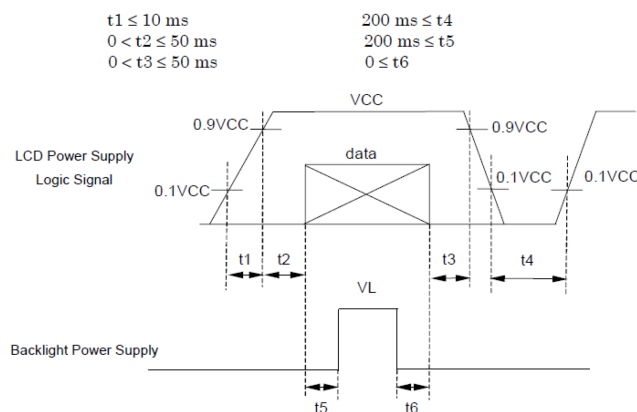
3.1.2 Electrical Absolute Maximum Ratings

3.1.2.1 TFT-LCD Module

(V_{SS}=GND=0)

Parameter	Symbol	Min.	Max.	Unit	Remark
Power Supply for LCM	V _{CC}	-0.3	4.0	V	
Permissive input ripple voltage	V _{RF}	-	100	mVp-p	V _{CC} =+3.3V

Display On/Off Sequence :



Product Specification

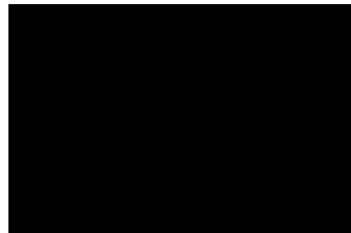
	Model: GKIGA1VDGE1S0	Rev. No.	Issued Date.	Page.
		A	2017.Dec.04	6 / 28

3.1.3 DC Electrical Characteristics of the TFT LCD

(Ta=25±2°C, V_{SS}=GND=0)

Item	Symbol	Min.	Typ.	Max.	Unit	Remark
Power supply for LCM	V _{CC}	3.0	3.3	3.6	V	
Input Voltage for logic	Differential Input High Threshold V _{TH}	-	-	+100	mA	
	Differential Input Low Threshold V _{TL}	-100	-	-	mA	
Power Supply current for LCM	I _{CC}	-	(270)	(300)	mA	Note 1

Note1: fv =60Hz , Ta=25°C , Display pattern : Black pattern



3.2 AC Timing Characteristic of The LCD

3.2.1 Timing Condition

Signal	Parameter	Symbol	Min.	Typ.	Max.	Unit.	Remark	
DCLK	CLK Frequency	t _{clk}	68.9	71.1	73.4	MHz		
DE	Horizontal	Horizontal total Time	t _H	1410	1440	1470	tCLK	
		Horizontal effective Time	t _{HA}	1280			tCLK	
		Horizontal Blank Time	t _{HB}	90	160	190	tCLK	
	Vertical	Vertical total Time	t _V	815	823	1023	t _H	
		Vertical effective Time	t _{VA}	800			t _H	
		Vertical Blank Time	t _{VB}	15	23	33	t _H	

Product Specification



Model: GKIGA1VDGE1S0

Rev. No.

Issued Date.

Page.

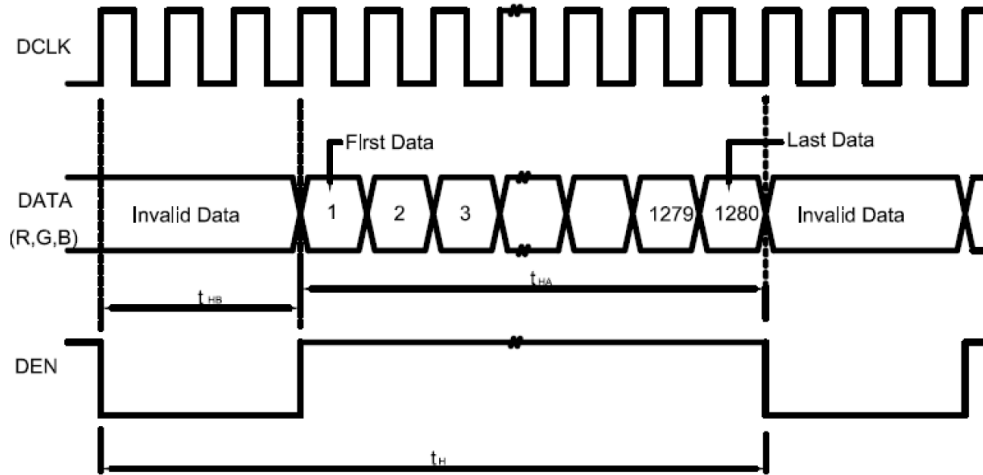
A

2017.Dec.04

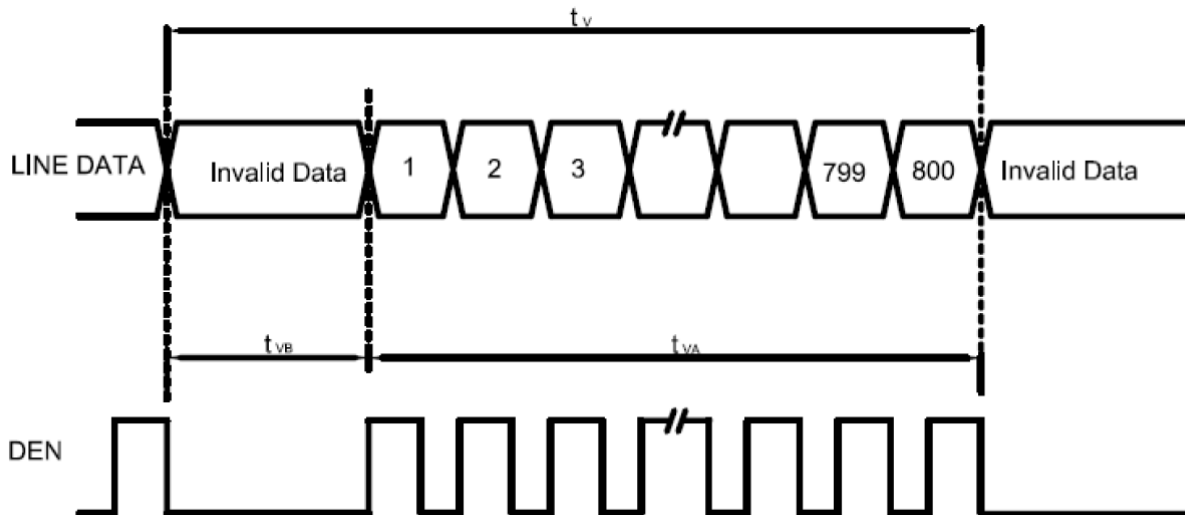
7 / 28

3.3 Timing Sequence(Timing Chart)

3.3.1 Horizontal Timing Sequence



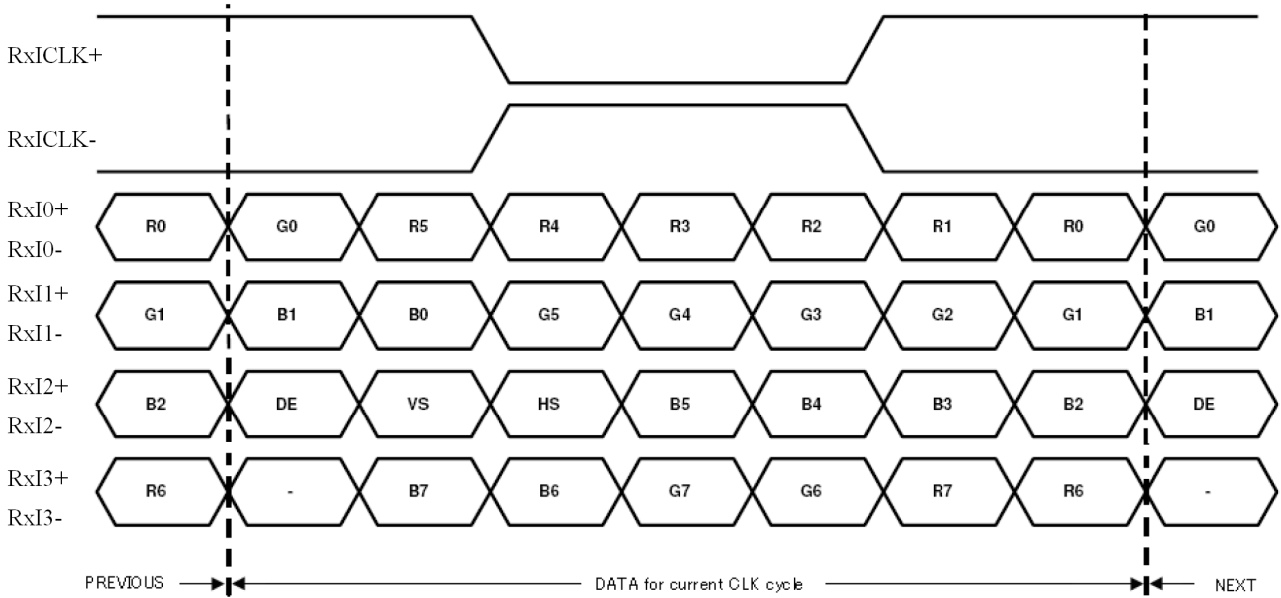
3.3.2 Vertical Timing Sequence



Product Specification

	Model: GKIGA1VDGE1S0	Rev. No.	Issued Date.	Page.
		A	2017.Dec.04	8 / 28

3.3.3 LVDS Input Data Mapping(VESA)



3.4 Back-Light Unit

The Back-light system is an edge-lighting type with 36 white LED (Light Emitting Diode)s. The characteristics of 36 white LEDs are shown in the following tables.

(Ta= Room Temp)

Characteristics	Symbol	Min.	Typ.	Max.	Unit	Note
Forward Voltage	VB	(25)	(28)	(31)	V	
Forward Current	IB	-	(200)	-	mA	(1)
Power Consumption	P _{BL}	-	(5060)	-	mW	(2)

Note (1) LEDs in 9 series x 4 parallel type.

(2) Where $IB = (200)mA$, $VB =$, $P_{BL} = VB \times IB$

(3) The environmental conducted under ambient air flow ,at $Ta=25\pm 2^{\circ}C$, $60\%RH\pm 5\%$

Product Specification

	Model: GKIGA1VDGE1S0	Rev. No.	Issued Date.	Page.
		A	2017.Dec.04	9 / 28

4. Optical Characteristics

4.1 Optical characteristic of the LCD

The following items are measured under stable conditions. The optical characteristics should be measured in a dark room or equivalent state with the methods.

Measuring equipment: BM-7A

Item	Symbol	Condition	Min	Type	Max	Unit	Note	
Brightness	B		(1000)	(1100)	-	cd/m ²		
Response time	T _r +T _f	θ=0°	-	(25)	(50)	ms	.	
Contrast ratio(Center)	CR	At optimized viewing angle	(600)	(800)	-	-		
Luminance Uniformity (9 Points)	ΔL		80	-	-	%		
Color Chromaticity (CIE 1931)	White	W _x	θ=0° Normal Viewing Angle	(TBD)	(TBD)	(TBD)	--	BM-7A
		W _y		(TBD)	(TBD)	(TBD)		
Viewing Angle (6H)	Hor.	θ _R	CR≥10	(75)	(85)	--	Degree	
		θ _L		(75)	(85)	--		
	Ver.	θ _U		(75)	(85)	--		
		θ _D		(75)	(85)	--		
LED Life Time	-	-	(50,000)	-	-			

a. Test equipment setup

After stabilizing and leaving the panel alone shall be warmed up for the stable operation of LCM, the measurement should be executed. Measurement should be executed in a stable, windless, and dark room. Optical specifications are measured by Topcon BM-7(fast) with a viewing angle of 2° at a distance of 50cm and normal direction.

b. Definition of response time: Tr and Tf

The response time is defined as the following figure and shall be measured by switching the input signal for "black" and "white".

Product Specification



Model: GKIGA1VDGE1S0

Rev. No.

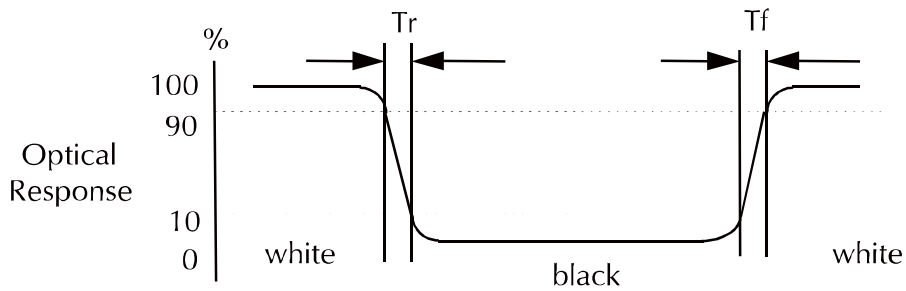
Issued Date.

Page.

A

2017.Dec.04

10 / 28



c. Definition of contrast ratio:

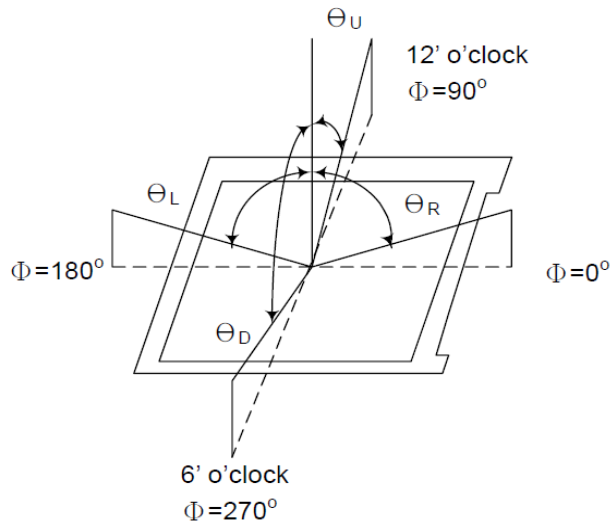
Brightness measured when LCD is at "white state"

$$\text{Contrast Ratio (CR)} = \frac{\text{Brightness measured when LCD is at "white state"}}{\text{Brightness measured when LCD is at "black state"}}$$

Brightness measured when LCD is at "black state"

d. Measured at the center area of the panel when all the input terminals of LCD panel are electrically opened.

e. View Angle



f. Definition of Luminance of White: Luminance of white at the center points

Light Source of Back-Light Unit	LED Type
---------------------------------	----------

Product Specification

	Model: GKIGA1VDGE1S0	Rev. No.	Issued Date.	Page.
		A	2017.Dec.04	11 / 28

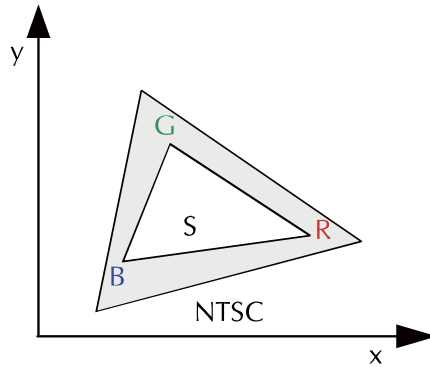
g. Definition of White Uniformity

$$\text{White Uniformity} = \frac{\text{Min. luminance of white among 9-points}}{\text{Max. luminance of white among 9-points}} \times 100\%$$


h. The definition of Color Gamut -Color Chromaticity CIE 1931

Color coordinate of white & red, green, blue at center point.

Color Gamut : NTSC(%) = (RGB Triangle Area / NTSC Triangle Area) x 100



Product Specification

	Model: GKIGA1VDGE1S0	Rev. No.	Issued Date.	Page.
		A	2017.Dec.04	12 / 28

5. I/O Terminal

5.1 Pin Assignment (Part No: 300E40-0010RA-G3(Starconn))

Pin No.	Symbol	I/O	Function	Remark
1	NC	—	Not Connect	
2	VCC	P	Power Supply for LCM	
3	VCC	P	Power Supply for LCM	
4	VCC_EDID	P	VCC_EDID	
5	SCL_EDID	I/O	SCL_EDID	
6	SDA_EDID	I/O	SDA_EDID	
7	NC	—	Not Connect	
8	RXI0-	I	Negative LVDS differential data 0 input	
9	RXI0+	I	Positive LVDS differential data 0 input	
10	GND	P	Ground	
11	RXI1-	I	Negative LVDS differential data 1 input	
12	RXI1+	I	Positive LVDS differential data 1 input	
13	GND	P	Ground	
14	RXI2-	I	Negative LVDS differential data 2 input	
15	RXI2+	I	Positive LVDS differential data 2 input	
16	GND	P	Ground	
17	RXICLK-	I	Negative LVDS differential CLK input	
18	RXICLK+	I	Positive LVDS differential CLK input	
19	GND	P	Ground	
20	RXI3-	I	Negative LVDS differential data 3 input	
21	RXI3+	I	Positive LVDS differential data 3 input	
22	GND	P	Ground	
23	NC	—	Not Connect	
24	NC	—	Not Connect	
25	NC	—	Not Connect	
26	NC	—	Not Connect	
27	NC	—	Not Connect	
28	NC	—	Not Connect	
29	NC	—	Not Connect	
30	NC	—	Not Connect	

Product Specification



Model: GKIGA1VDGE1S0

Rev. No.

Issued Date.

Page.

A

2017.Dec.04

13 / 28

Pin No.	Symbol	I/O	Function	Remark
31	NC	—	Not Connect	
32	NC	—	Not Connect	
33	NC	—	Not Connect	
34	NC	—	Not Connect	
35	BIST	I	BIST Pin	
36	NC	—	Not Connect	
37	NC	—	Not Connect	
38	NC	—	Not Connect	
39	NC	—	Not Connect	
40	NC	—	Not Connect	

I: Input, P: Power

Notes:

- 1) NC Pin must be retained; this pin can't contact GND or other signal.
- 2) GND Pin must ground contact, can not be floating.

5.2 Back Light Unit (CN1: Part No: JST:BHSR-02VS-01(N) or equivalent.)

Pin No.	Symbol	Function	Remark
1	LEDA	Power Supply for LED backlight	RED
2	LEDK	GND for LED backlight	BLACK

Product Specification



Model: GKIGA1VDGE1S0

Rev. No.

Issued Date.

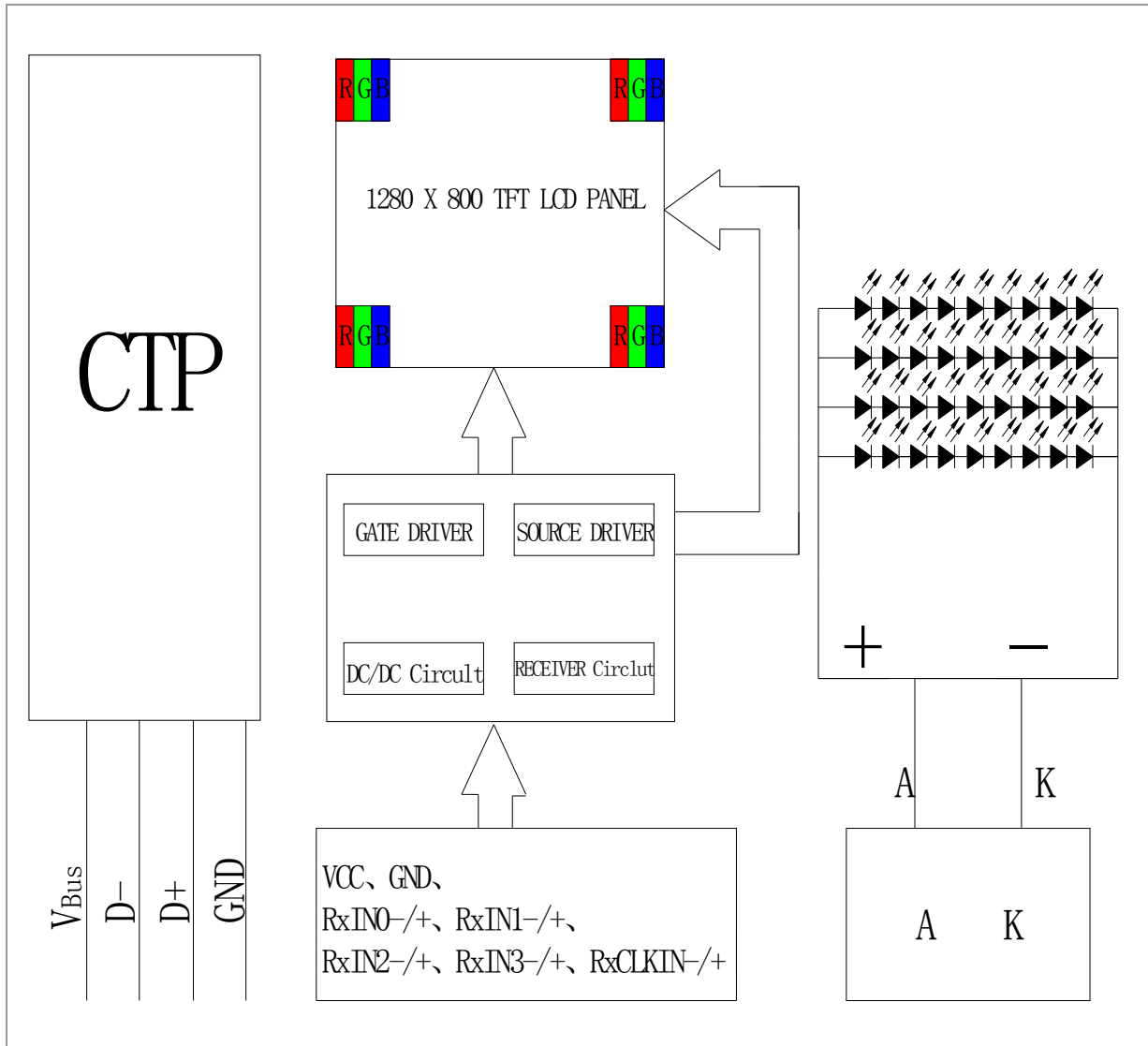
Page.

A

2017.Dec.04

14 / 28

5.3 Block Diagram



Product Specification

	Model: GKIGA1VDGE1S0	Rev. No.	Issued Date.	Page.
		A	2017.Dec.04	15 / 28


6. Displayed Color and Input Data

	Color & Gray Scale	Data Signal																	
		R5	R4	R3	R2	R1	R0	G5	G4	G3	G2	G1	G0	B5	B4	B3	B2	B1	B0
Basic Color	Black	0	0	0	0	0	0	0	0	0	0	0	0	0	0	0	0	0	0
	Red(0)	1	1	1	1	1	1	0	0	0	0	0	0	0	0	0	0	0	0
	Green(0)	0	0	0	0	0	0	1	1	1	1	1	1	0	0	0	0	0	0
	Blue(0)	0	0	0	0	0	0	0	0	0	0	0	0	1	1	1	1	1	1
	Cyan	0	0	0	0	0	0	1	1	1	1	1	1	1	1	1	1	1	1
	Magenta	1	1	1	1	1	1	0	0	0	0	0	0	1	1	1	1	1	1
	Yellow	1	1	1	1	1	1	1	1	1	1	1	1	0	0	0	0	0	0
White	1	1	1	1	1	1	1	1	1	1	1	1	1	1	1	1	1	1	
Red	Black	0	0	0	0	0	0	0	0	0	0	0	0	0	0	0	0	0	0
	Red(62)	0	0	0	0	0	1	0	0	0	0	0	0	0	0	0	0	0	0
	Red(61)	0	0	0	0	1	0	0	0	0	0	0	0	0	0	0	0	0	0
	:	:	:	:	:	:	:	:	:	:	:	:	:	:	:	:	:	:	:
	Red(31)	0	1	1	1	1	1	0	0	0	0	0	0	0	0	0	0	0	0
	:	:	:	:	:	:	:	:	:	:	:	:	:	:	:	:	:	:	:
	Red(1)	1	1	1	1	1	0	0	0	0	0	0	0	0	0	0	0	0	0
Red(0)	1	1	1	1	1	1	0	0	0	0	0	0	0	0	0	0	0	0	
Green	Black	0	0	0	0	0	0	0	0	0	0	0	0	0	0	0	0	0	0
	Green(62)	0	0	0	0	0	0	0	0	0	0	0	1	0	0	0	0	0	0
	Green(61)	0	0	0	0	0	0	0	0	0	0	1	0	0	0	0	0	0	0
	:	:	:	:	:	:	:	:	:	:	:	:	:	:	:	:	:	:	:
	Green(31)	0	0	0	0	0	0	0	1	1	1	1	1	0	0	0	0	0	0
	:	:	:	:	:	:	:	:	:	:	:	:	:	:	:	:	:	:	:
	Green(1)	0	0	0	0	0	0	1	1	1	1	1	0	0	0	0	0	0	0
Green(0)	0	0	0	0	0	0	1	1	1	1	1	1	0	0	0	0	0	0	
Blue	Black	0	0	0	0	0	0	0	0	0	0	0	0	0	0	0	0	0	0
	Blue(62)	0	0	0	0	0	0	0	0	0	0	0	0	0	0	0	0	0	1
	Blue(61)	0	0	0	0	0	0	0	0	0	0	0	0	0	0	0	0	1	0
	:	:	:	:	:	:	:	:	:	:	:	:	:	:	:	:	:	:	:
	Blue(31)	0	0	0	0	0	0	0	0	0	0	0	0	0	1	1	1	1	1
	:	:	:	:	:	:	:	:	:	:	:	:	:	:	:	:	:	:	:
	Blue(1)	0	0	0	0	0	0	0	0	0	0	0	0	1	1	1	1	1	0
Blue(0)	0	0	0	0	0	0	0	0	0	0	0	0	1	1	1	1	1	1	

0 : Low level voltage, 1 : High level voltage

Each basic color can be displayed in 64 gray scales from 6 bit data signals. With the combination of total 18 bit data signals, the 262,144-color display can be achieved on the screen.

Product Specification

	Model: GKIGA1VDGE1S0	Rev. No.	Issued Date.	Page.
		A	2017.Dec.04	16 / 28

7. Projected Capacitive Touch Panel


7.1 Main Feature

Item	Specification	Unit
Screen Size	10.1 inches	Diagonal
Type	Capacitive Touch Panel	--
Input Mode	Human's Finger	--
Active Area	217.96 (H)(typ.) X 136.6 (V)(typ.)	mm
Module Outline	241.96 (H)(typ.) X 175 (V)(typ.)	mm
Interface	USB	--
Cover glass pencil-handness	7H(min)	--
Digital Power Supply	5V DC (typ)	V
IC solution	AT1246	-

7.2 Pin Assignments and Definitions

Pin No.	Symbol	I/O	Function	Remark
1	GND	P	Ground	
2	NC	-	NO Connect	
3	NC	-	NO Connect	
4	NC	-	NO Connect	
5	NC	-	NO Connect	
6	NC	-	NO Connect	
7	GND	P	Ground	
8	D+	-	USB Data+	
9	D-	-	USB Data -	
10	VBus	-	Power Supply Voltage For CTP	

Product Specification

	Model: GKIGA1VDGE1S0	Rev. No.	Issued Date.	Page.
		A	2017.Dec.04	17 / 28

8. Reliability Condition

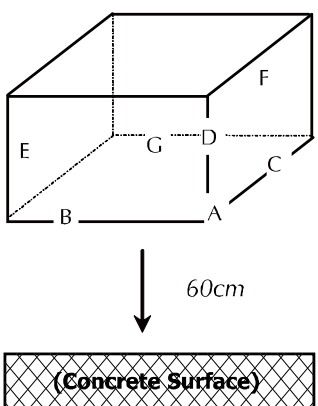
No change on display and in operation under the following test condition.

Condition: Unless otherwise specified, tests will be conducted under the following condition.

Temperature: $20 \pm 5^\circ\text{C}$.

Humidity: $65 \pm 5\% \text{RH}$.

Tests will be not conducted under functioning state.

No.	Parameter	Condition	Notes
1	High Temperature Operating	$85^\circ\text{C} \pm 2^\circ\text{C}$, 240hrs (Operation state).	
2	Low Temperature Operating	$-30^\circ\text{C} \pm 2^\circ\text{C}$, 240hrs (Operation state).	1
3	High Temperature Storage	$85^\circ\text{C} \pm 2^\circ\text{C}$, 240hrs.	2
4	Low Temperature Storage	$-30^\circ\text{C} \pm 2^\circ\text{C}$, 240hrs.	1,2
5	High Temperature and High Humidity Storage Test	$60^\circ\text{C} \pm 2^\circ\text{C}$, 90%, 240hrs.	1,2
6	Vibration Test	Total fixed amplitude: 1.5mm. Vibration Frequency: 10~55Hz. One cycle 60 seconds to 3 direction of X, Y, Z each 15 minutes.	3
7.	Drop Test	To be measured after dropping from 60cm high on the concrete surface in packing state.  <p style="margin-left: 20px;"><i>Dropping method corner dropping:</i></p> <p style="margin-left: 20px;"><i>A corner: Once edge dropping.</i></p> <p style="margin-left: 20px;"><i>B, C, D edge: Once face dropping.</i></p> <p style="margin-left: 20px;"><i>E, F, G face: Once.</i></p>	

- Notes:
1. No dew condensation to be observed.
 2. The function test shall be conducted after 4 hours storage at the normal temperature and humidity after removed from the test chamber.
 3. Vibration test will be conducted to the product itself without putting I in a container.

Product Specification



Model: GKIGA1VDGE1S0

Rev. No.

Issued Date.

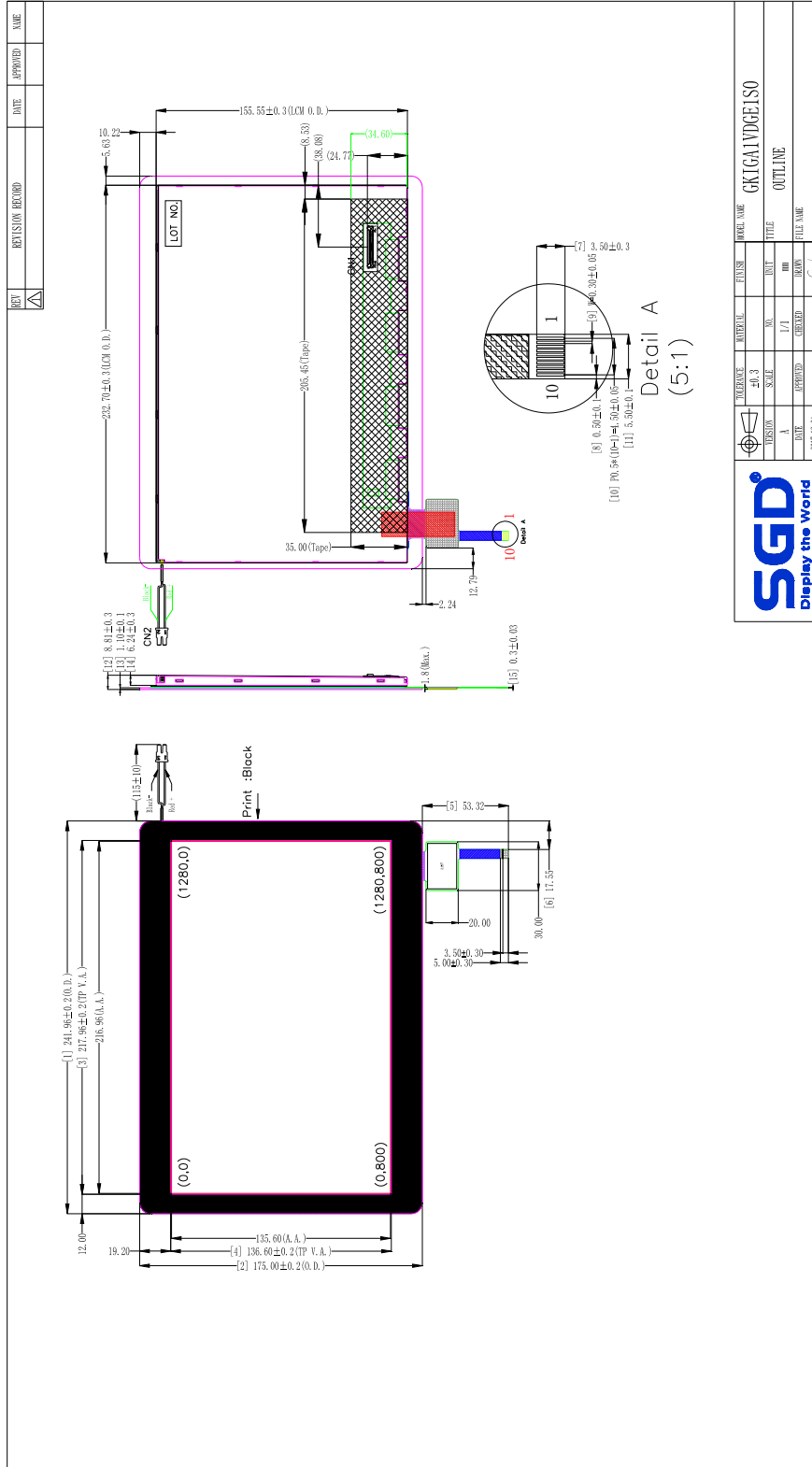
Page.

A

2017.Dec.04

18 / 28

9. Dimensional Outlines



Product Specification				
	Model: GKIGA1VDGE1S0	Rev. No.	Issued Date.	Page.
		A	2017.Dec.04	19 / 28

LCM Inspection Specification

產品型號/Model No.: **T101GVC01**

<若未標明特定產品型號則視為認可全應用機種/We may deem that you have approved all model if no model list above>

Version:A

CONTENTS

ISSUE:Sep.13.2017

No.	ITEM	PAGE
1	COVER	--
2	RECORD OF REVISION	2
3	DESCRIPTION	3
4	INSPECTION AND ENVIRONMENT CONDITIONS	3
5	INSPECTION CRITERIA	4 ~ 7

Product Specification

	Model: GKIGA1VDGE1S0	Rev. No.	Issued Date.	Page.
		A	2017.Dec.04	20 / 28

2. RECORD OF REVISION

Rev	DATE	PAGE	SUMMARY
-----	------	------	---------

Product Specification



Model: GKIGA1VDGE1S0

Rev. No.

Issued Date.

Page.

A

2017.Dec.04

21 / 28

--	--	--	--

Product Specification				
	Model: GKIGA1VDGE1S0	Rev. No.	Issued Date.	Page.
		A	2017.Dec.04	22 / 28

3.適用範圍/Description

此份文件適用於富相科技生產之 10.1” TFT 模組

This document shall be applied to TFT-LCD Module for 10.1” TFT

4.檢查條件與環境/ Inspection and Environment Conditions

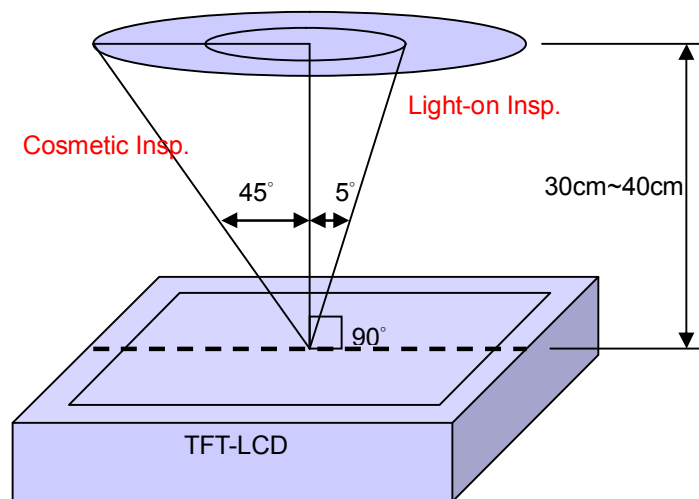
4.1 檢查條件/ Inspection Conditions:

(1) 檢測距離/ Inspection Distance: 35 cm±5cm

(2) 觀看角度/ View Angle:

點燈檢驗角度/ Light-on Inspection Angle : ±5°

外觀檢驗角度/ Cosmetic Inspection Angle : ±45°



(垂直於液晶顯示表面/ perpendicular to LCD panel surface)

4.2 環境條件/Environment Conditions:

溫度/ Ambient Temperature		23°C±5°C
濕度/ Ambient Humidity		55±10%RH
亮度 Ambient Illumination	外觀檢驗 Cosmetic Inspection	more than 600 Lux
	點燈檢驗 Functional Inspection	300~500 Lux

Product Specification

	Model: GKIGA1VDGE1S0	Rev. No.	Issued Date.	Page.
		A	2017.Dec.04	23 / 28

4.3 抽樣條件/Sampling Conditions:

- (1) 批量：單次運送單一機種之數量
 Lot Size: Quantity of shipment lot per model
- (2) 抽樣方法/Sampling Method:

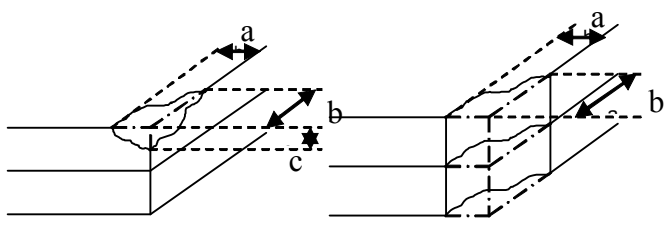
抽樣計畫 Sampling Plan		MIL-STD-105E
		正常檢驗、單次抽樣 Normal Inspection, Single Sampling
		Level II
AQL	主要缺點 Major Defect	1.0%
	次要缺點 Minor Defect	1.5%

- (3) 主缺(MA)及次缺(MI)定義於”3.檢查標準”

The classification of Major(MA) and Minor(MI) defects is shown as 3. Inspection Criteria.

5. 檢查標準/ Inspection Criteria

5.1 外觀檢查(面板)/Cosmetic Inspection(Panel):

項目 / Item	判斷標準 / Judgment Criteria	分類 / Classification
面板缺角 Chipping on Panel	 <p>$a \leq 3.0\text{mm}$、$b \leq 3.0\text{mm}$、$c \leq t$ 單片玻璃厚度 (Bottom glass thickness)</p>	MA
面板表面刮傷 Scratch on Panel *Note-2	1.BM: Ignored 2.Pixel area $W \leq 0.05\text{mm}$ or $L < 5\text{mm}$: Ignored/不計 $0.05\text{mm} < W \leq 0.1\text{mm}$ and $L \leq 5\text{mm}$: $N \leq 5$ $W > 0.1\text{mm}$ or $L > 5\text{mm}$: Not allowed/不允許	MI
面板 表面氣泡,凹痕 Bubble or Dent on Panel/Touch Panel *Note-3	1.BM: Ignored 2.Pixel area $D \leq 0.2\text{mm}$: Ignored/不計 $0.2\text{mm} < D \leq 0.5\text{mm}$: $N \leq 4$ $D > 0.5\text{mm}$: Not allowed/不允許	MI

Product Specification

	Model: GKIGA1VDGE1S0	Rev. No.	Issued Date.	Page.
		A	2017.Dec.04	24 / 28

面板裂痕 Panel Crack	 不允許裂痕/ Not Allowed crack	MA
鐵殼變型 Bezel Deformation	不允許明顯的變形 Obvious deformation is not allowed.	MI
鐵殼氧化 Bezel Oxidation	生鏽不可連續超過一公分(馬口鐵不保證) Not allowed if it rusts continuously over 1 cm (It is out of warranty with rusted tin plate)	MI
鐵殼刮傷 Bezel Scratch	鐵件無感刮傷忽略; 鐵件有感刮傷 $L \leq 20\text{mm}$, $W \leq 0.2$, $N \leq 3$	MI
壓痕/凹/凸點(A面) Flange Squash Dent /Flange(Front Side)	$D(W) \leq 1, L \leq 3, N \leq 3;$	MI
背光高壓線裸露 B/L High Voltage Wire Denudation	不允許 Not allowed	MA
偏光片脫膠/殘膠/ 溢膠 Polarizer flaw or leak out resin	顯示領域範圍內不可 Defect is defined as the active area.	MI
外觀尺寸 Outline Dimension	需符合 Product Spec.所示之規格 Must in Spec, refer to related product spec.	MI

5.2 點燈檢查/ Functional Inspection:

項目/ Item	判斷標準/ Judgment Criteria			分類/ Classification
	Area(Note 1)	I	O	
點缺陷 Point Defect	Bright dot 亮點	Random	3	
		2 dots adjacent	0	1
		3 dots adjacent or more	0	0
	Dark dot 暗點	Random	4	
		2 dots adjacent	1	
		3 dots adjacent or more	0	0
	Total Dot Defect 總數		5	
Distance	Distance between	$L \geq 15\text{mm}$		

Product Specification

	Model: GKIGA1VDGE1S0	Rev. No.	Issued Date.	Page.
		A	2017.Dec.04	25 / 28

	距離	Bright and Bright dot	
		Distance between Bright and Dark dot	$L \geq 5\text{mm}$
		Distance between Dark dot	$L \geq 5\text{mm}$
(1)缺陷大小 $>0.5\text{dot}$ 定義為點缺陷 It is defined as Point Defect if defect area $>0.5\text{dot}$ (2)缺陷大小 $\leq 0.5\text{dot}$ 不計 It is ignored if defect area $\leq 0.5\text{dot}$ (3)微弱亮透過 ND Filter 6%仍可視計為點缺陷(全黑畫面檢查) Weak point defect will be defined as Bright Dot if it can be observed through ND filter 6%(Full Screen Black Inspection)			
線缺陷 Line Defect	不允許明顯的線缺陷 Obvious vertical or horizontal line defect is not allowed.		MA
Mura	不允許任何透過 ND Filter 6 % 仍可視之 Mura Not allowed if it can be observed through ND Filter 6 %		MI
點狀異物 Foreign Material in spot shape *Note-3	Visible under : ND6% $D \leq 0.2\text{mm}$: Ignored/不計 $0.2\text{mm} < D \leq 0.5\text{mm}$: $N \leq 5$ $D > 0.5\text{mm}$: Not allowed/不允許		MI
線狀異物 Foreign Material in line or spiral shape *Note-4	Visible under : ND6% $W \leq 0.05\text{mm}$ or $L \leq 6.0\text{mm}$: Ignored/不計 $0.05\text{mm} < W \leq 0.5\text{mm}$ and $L \leq 6.0\text{mm}$: $N \leq 5$ $W > 0.5\text{mm}$ or $L > 6.0\text{mm}$: Not allowed/不允許		MI
顯示異常 Display Function Abnormal	不允許任何顯示異常 No Malfunction can be allowed		MA

Product Specification			
	Model: GKIGA1VDGE1S0	Rev. No.	Issued Date.
		A	2017.Dec.04
			Page.
			26 / 28

5.3 Appearance inspection(Touch Panel)

(1) Scratch

Width	Length	Pitch	Criterion
$W \leq 0.05\text{mm}$	$L \leq 15\text{mm}$	---	Acceptable
$0.05\text{mm} < W \leq 0.1\text{mm}$	$L \leq 10\text{mm}$	5mm	Acceptable if such foreign objects are 4 or less
$0.1\text{mm} < W \leq 0.1\text{mm}$	$L \leq 10\text{mm}$	5mm	Acceptable if such foreign objects are 2 or less
$0.15\text{mm} < W$	$L > 10\text{mm}$	---	Unacceptable

(2) Granular foreign object

Diameter	Pitch	Criterion
$D \leq 0.2\text{mm}$	---	Acceptable
$0.2\text{mm} < D \leq 0.5\text{mm}$	5mm	Acceptable if such foreign objects are 5 or less
$0.5\text{mm} < D$	---	Unacceptable

Product Specification

	Model: GKIGA1VDGE1S0	Rev. No.	Issued Date.	Page.
		A	2017.Dec.04	27 / 28

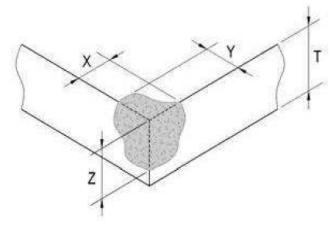
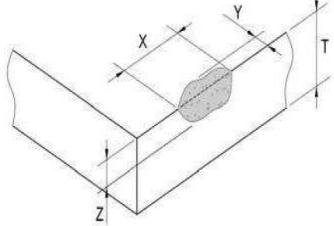
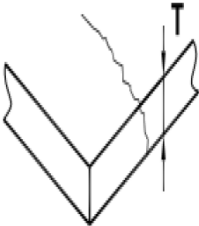
(3) Linear foreign object

Width	Length	Pitch	Criterion
$W \leq 0.05\text{mm}$	$L \leq 8\text{mm}$	---	Acceptable
$0.05\text{mm} < W \leq 0.1\text{mm}$	$L \leq 8\text{mm}$	5mm	Acceptable if such foreign objects are 4 or less
$0.1\text{mm} < W \leq 0.15\text{mm}$	$L \leq 8\text{mm}$	5mm	Acceptable if such foreign objects are 2 or less
$0.15\text{mm} < W$	$L > 8\text{mm}$	---	Unacceptable

(4) Bubble / Stain on film

Diameter	Pitch	Criterion
$D \leq 0.15\text{mm}$	---	Acceptable
$0.15\text{mm} < D \leq 0.25\text{mm}$	5mm	Acceptable if such foreign objects are 3 or less
$0.25\text{mm} < D \leq 0.4\text{mm}$	5mm	Acceptable if such foreign objects are 2 or less
$0.4\text{mm} < D \leq 0.6\text{mm}$	---	Acceptable if such foreign objects are 1 or less
$0.6\text{mm} < D$	---	Unacceptable

(5) Breakage on glass

	Corner Fragment	Side Fragment	Crack												
Judgment Criterion															
Unit : mm	<table style="width: 100%; border-collapse: collapse;"> <tr> <td style="width: 33%; text-align: center;">X</td> <td style="width: 33%; text-align: center;">Y</td> <td style="width: 33%; text-align: center;">Z</td> </tr> <tr> <td style="text-align: center;">$OK \leq 0.3$</td> <td style="text-align: center;">$OK \leq 0.3$</td> <td style="text-align: center;">$OK \leq 1/2T$</td> </tr> </table>	X	Y	Z	$OK \leq 0.3$	$OK \leq 0.3$	$OK \leq 1/2T$	<table style="width: 100%; border-collapse: collapse;"> <tr> <td style="width: 33%; text-align: center;">X</td> <td style="width: 33%; text-align: center;">Y</td> <td style="width: 33%; text-align: center;">Z</td> </tr> <tr> <td style="text-align: center;">$OK \leq 0.3$</td> <td style="text-align: center;">$OK \leq 0.3$</td> <td style="text-align: center;">$OK \leq 1/2T$</td> </tr> </table>	X	Y	Z	$OK \leq 0.3$	$OK \leq 0.3$	$OK \leq 1/2T$	Unacceptable
X	Y	Z													
$OK \leq 0.3$	$OK \leq 0.3$	$OK \leq 1/2T$													
X	Y	Z													
$OK \leq 0.3$	$OK \leq 0.3$	$OK \leq 1/2T$													

T : Thickness

If any value of "X", "Y" and "Z" is out of allowable range, it shall be regarded as defective.

(6) Printing Area (BM Area)

No.	Items	Spec.	Criterion
1	White / Dichroic speck	---	According to Granular foreign object spec.
2	Scratch	---	According to Scratch spec.

3	Pin Hole	$D \leq 0.15\text{mm}$ $D > 0.15\text{mm}$	Acceptable Unacceptable
---	----------	---	----------------------------

Product Specification



Model: GKIGA1VDGE1S0

Rev. No.

Issued Date.

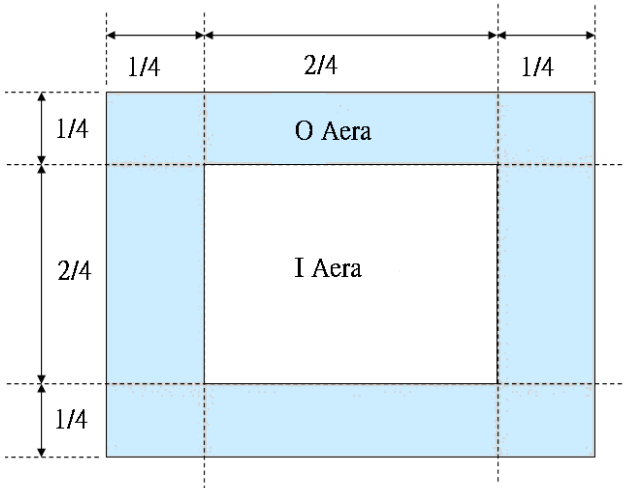
Page.

A

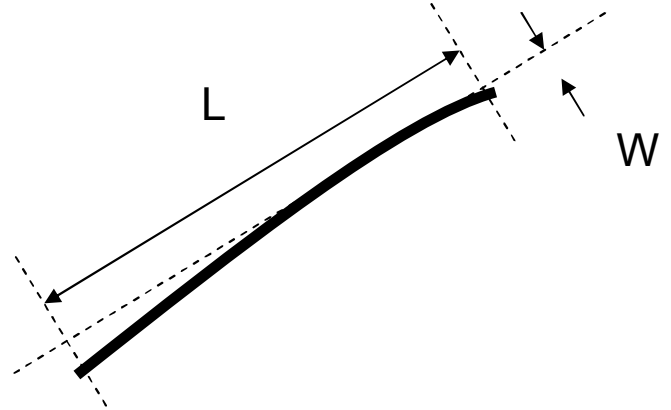
2017.Dec.04

28 / 28

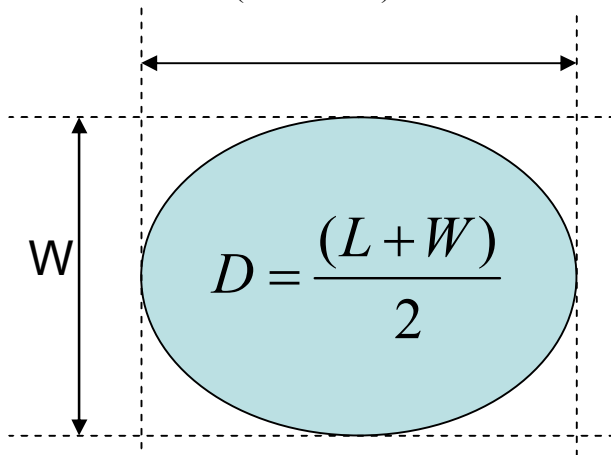
Note-1 : I/O 區定義 / I/O Area Definition



Note-2 : Polarizer 刮傷 / Polarizer Scratch



Note-3 : 點狀異物 / Spot Foreign Material
($W \geq L / 4$)



Note-4 : 線狀異物 Line or Spiral Foreign Material
($W < L / 4$)

