

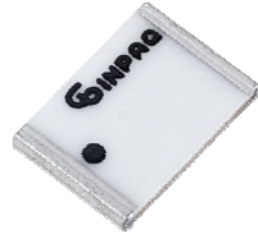
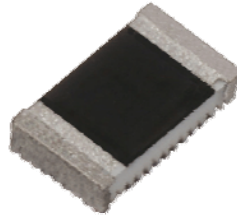
# Chip Antenna

## Specification

Type	Multi-Function
Part No	(GPS+2.4G) ACM0-3216-A1-CC-S (GPS+Glonass) ACM4-5036-A1-CC-S (2.4G+5G) ACM3-5036-A1-CC-S

Product name	(GPS+2.4G)	(GPS+Glonass)
	ACM0-3216-A1-CC-S	ACM4-5036-A1-CC-S

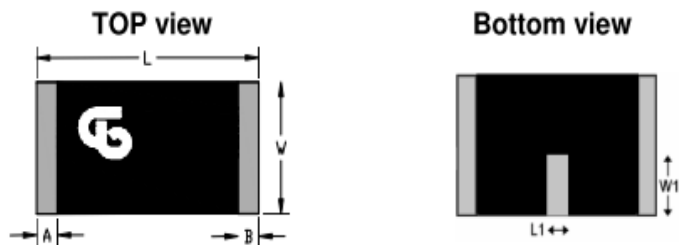
## Appearance



## Specification

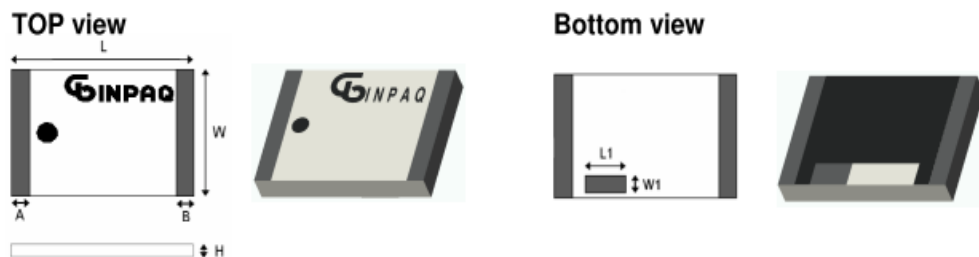
Center Frequency (MHz)	1575 / 2450	1575 / 1604
Frequency Band (MHz)	1570 ~ 1580 / 2400 ~ 2500	1570 ~ 1580 / 1593 ~ 1615
V.S.W.R.	< 2.5	< 2.0
Polarization	Linear	Linear
Impedance( $\Omega$ )	50 typ.	50 typ.
Peak Gain (dBi)	0.69 / 0.98	3.18 / 3.25
Efficiency (%)	58 / 71	77 / 78
Dimension (mm)	a. 3.2 x 1.6 x 0.5	b. 5.0 x 3.6 x 0.7

a



Chip Antenna	L	W	A	B	L1	W1	H
ACM0-3216	3.2±0.30	1.7±0.20	0.3±0.15	0.3±0.15	0.47±0.20	0.7±0.20	0.5±0.1

b



Chip Antenna	L	W	A	B	L1	W1	H
ACM4-5036	5.2±0.3	3.7±0.3	0.45±0.25	0.45±0.25	1.1±0.20	0.55±0.20	0.70±0.15

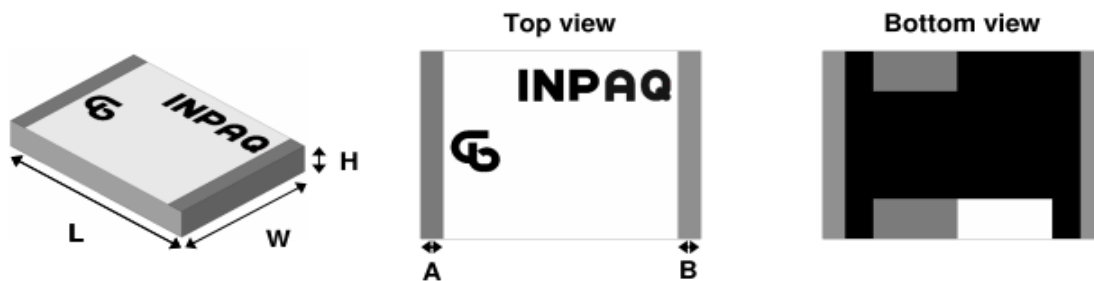
Product name

**(2.4G+5G)**  
 ACM3-5036-A1-CC-S

Appearance


**Specification**

Center Frequency (MHz)	1575 / 1604
Frequency Band (MHz)	2400 ~ 2500 / 5000 ~ 6000
V.S.W.R.	< 2.0
Polarization	Linear
Impedance( $\Omega$ )	50 typ.
Peak Gain (dBi)	3.0 / 3.3
Efficiency (%)	73 / 80
Dimension (mm)	5.0 x 3.6 x 0.7



Marking is Black

L	5.20 ± 0.30
W	3.70 ± 0.30
H	0.70 ± 0.15
A	0.45 ± 0.25
B	0.45 ± 0.25
L1	1.10 ± 0.20
W1	0.55 ± 0.20