

ACH-2455-A1-MF-S

1. Explanation of Part Number :

$\frac{AC}{(1)} \frac{H}{(2)} - \frac{2455}{(3)} \frac{A1}{(4)} - \frac{MF}{(5)} - \frac{S}{(6)} - (7)$

- (1) Product Type : Chip Antenna
- (2) Center Frequency/Band Code : H -915MHz
- (3) Size Code : 24mm(length) x 5.5mm(width)
- (4) Design Revision Code : D1= Rev. 1
- (5) Series No. : MF=MONOPOLE PCB type
- (6) Special Code : S= RoHS Compliant
- (7) Suffix For Special Requirements

2. Electrical Specification :

ITEM	SPECIFICATION
Frequency Band	915 MHz
VSWR	2 Max (depends on the special environment)
Polarization	Linear
Impedance	50 ohm Typ.
Operating temperature	-45 ~85 °C
Dimension	24 x 5.5 x 3.9mm

* Test condition : Test board size 114*45 mm
Matching circuit may be required

UNLESS OTHER SPECIFIED TOLERANCES ON :
 X=N/R X.X=N/R X.XX =N/R
 ANGLES=N/R HOLEDIA=N/R



INPAQ TECHNOLOGY CO., LTD.

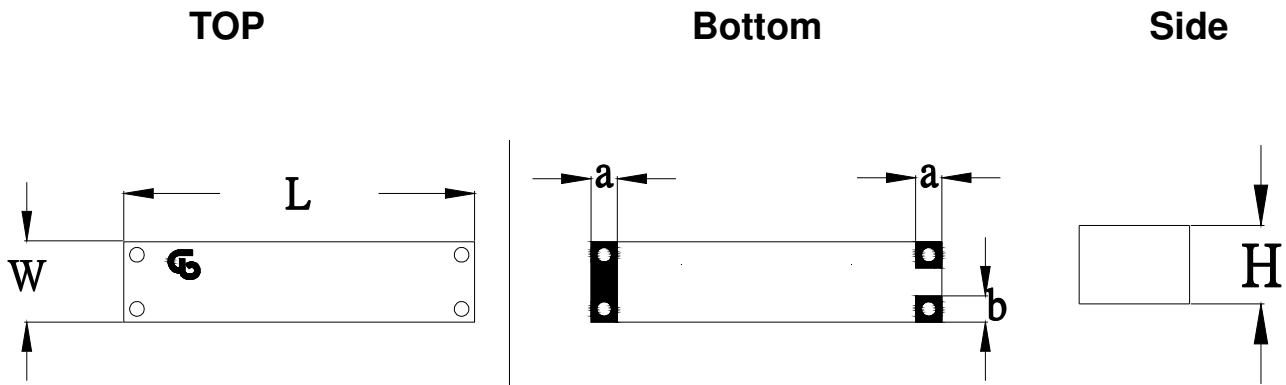
SCALE : N/R	UNIT : mm
DRAWN BY : 郭副哲	CHECKED BY : 劉維林
DESIGNED BY : 陳武君	APPROVED BY : 謝立庭

THIS DRAWINGS AND SPECIFICATIONS ARE THE PROPERTY OF INPAQ TECHNOLOGY CO.,LTD.AND SHALL NOT BE REPRODUCED OR USED AS THE BASIS FOR THE MANUFACTURE OR SALE OF APPARATUS OR DEVICES WITHOUT PERMISSION

TITLE : ACH-2455-A1-MF-S Specification

DOCUMENT NO.	ENS000119580	SPEC REV.
		P1

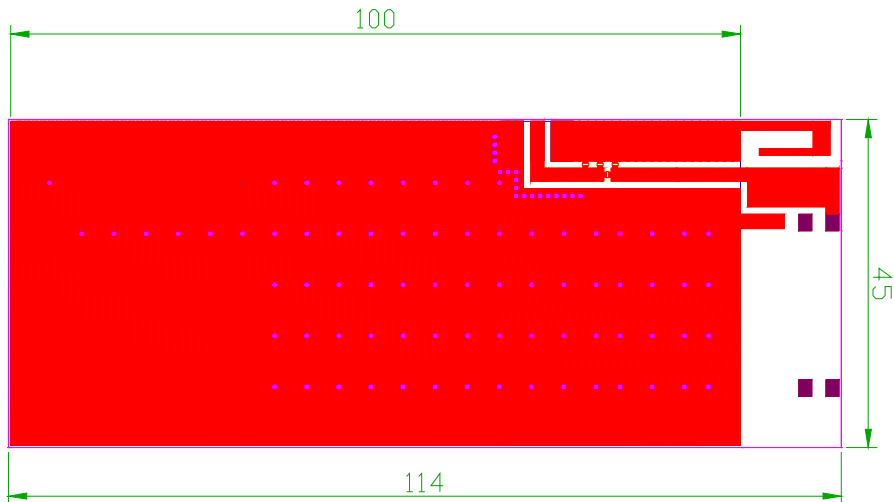
3. Physical Dimension :



Chip Antenna	L	W	H	a	b
ACH-2455-A1-MF-S	24±0.3	5.5±0.3	3.9±0.3	1.8±0.25	1.8±0.25

4. Recommend PCB Layout :

Top View



UNLESS OTHER SPECIFIED TOLERANCES ON :
 X=N/R X.X=N/R X.XX =N/R
 ANGLES=N/R HOLEDIA=N/R



INPAQ TECHNOLOGY CO., LTD.

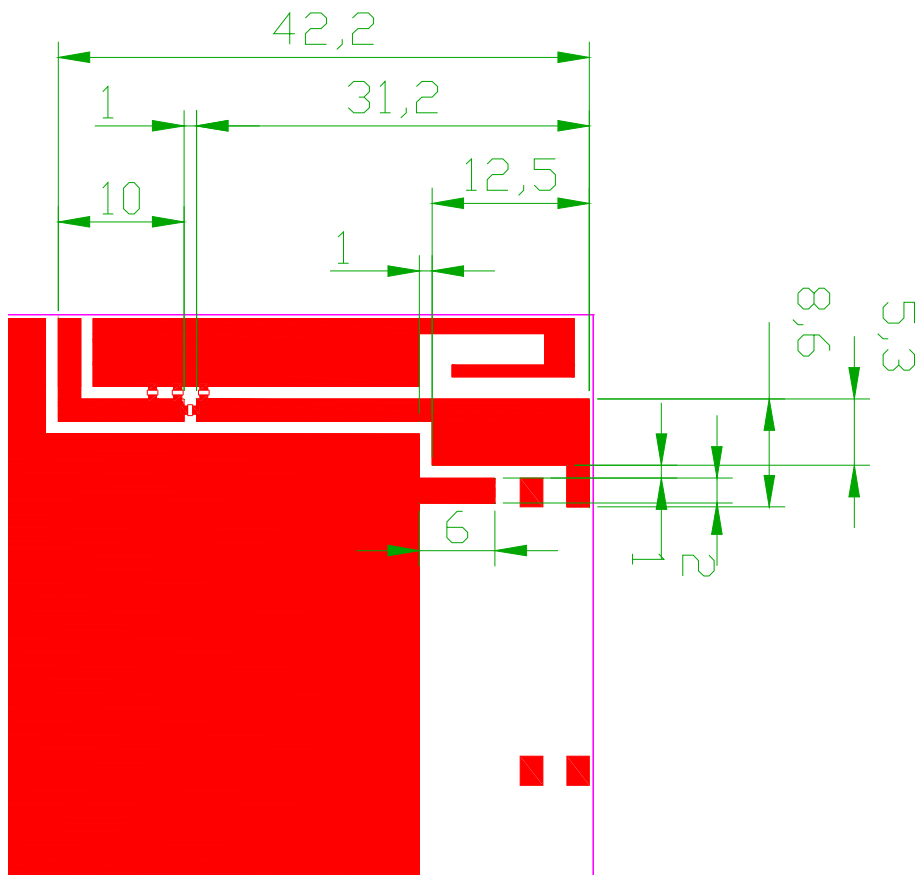
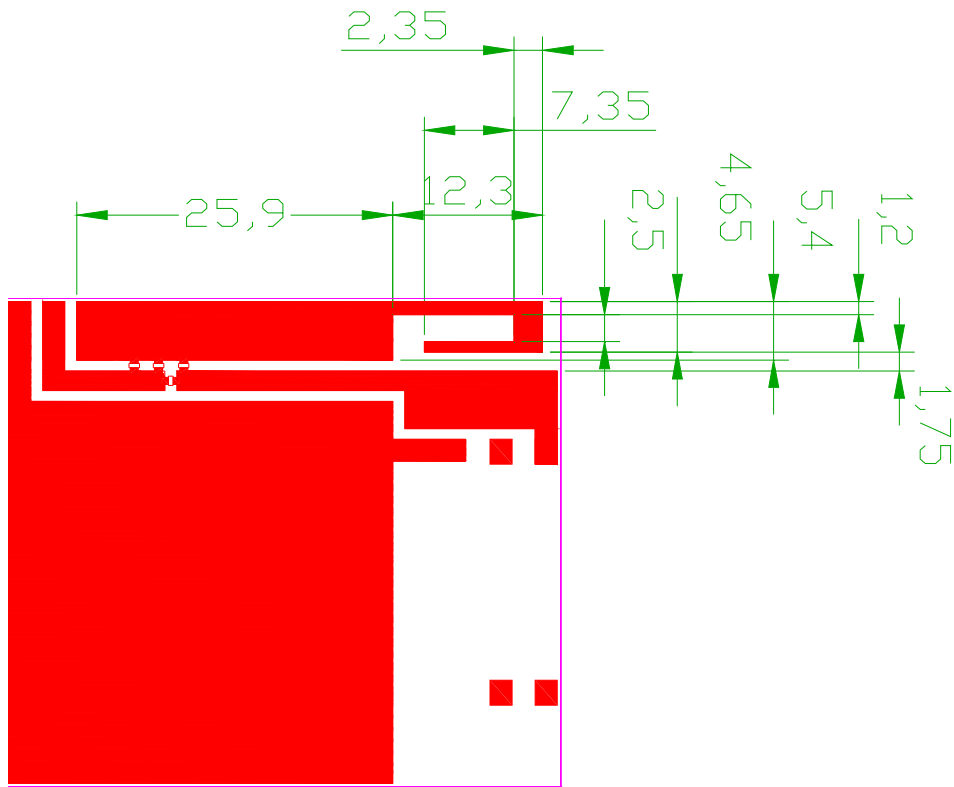
SCALE : N/R UNIT : mm
 DRAWN BY : 郭副哲 CHECKED BY : 劉維林
 DESIGNED BY : 陳武君 APPROVED BY : 謝立庭

THIS DRAWINGS AND SPECIFICATIONS ARE THE PROPERTY OF INPAQ TECHNOLOGY CO.,LTD.AND SHALL NOT BE REPRODUCED OR USED AS THE BASIS FOR THE MANUFACTURE OR SALE OF APPARATUS OR DEVICES WITHOUT PERMISSION

TITLE : ACH-2455-A1-MF-S Specification

DOCUMENT NO. ENS000119580

SPEC REV. P1



UNLESS OTHER SPECIFIED TOLERANCES ON :

X=N/R X.X=N/R X.XX =N/R

ANGLES=N/R HOLEDIA=N/R

SCALE : N/R

UNIT : mm

DRAWN BY : 郭副哲

CHECKED BY : 劉維林

DESIGNED BY : 陳武君

APPROVED BY : 謝立庭

TITLE : ACH-2455-A1-MF-S Specification



INPAQ TECHNOLOGY CO., LTD.

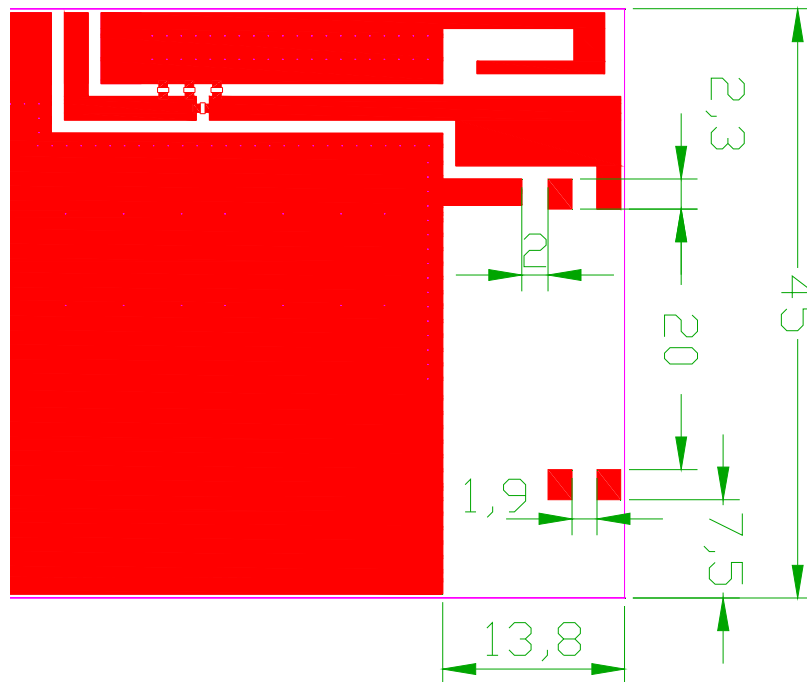
THIS DRAWINGS AND SPECIFICATIONS ARE THE PROPERTY OF INPAQ TECHNOLOGY CO.,LTD.AND SHALL NOT BE REPRODUCED OR USED AS THE BASIS FOR THE MANUFACTURE OR SALE OF APPARATUS OR DEVICES WITHOUT PERMISSION

DOCUMENT NO.

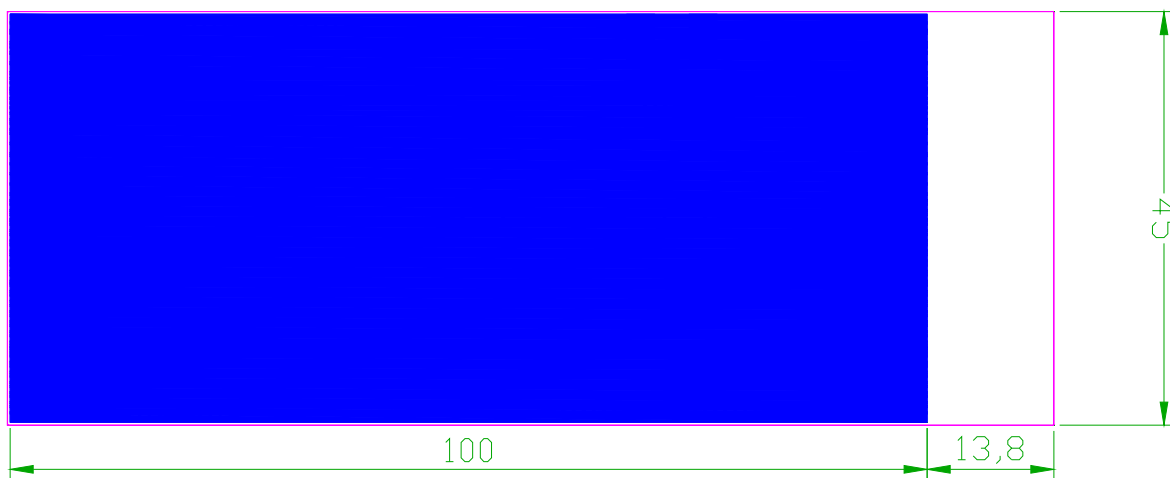
ENS000119580

SPEC REV.

P1



Bottom View



- Top Layer
- Bottom Layer
- Top Solder

Unit : mm

UNLESS OTHER SPECIFIED TOLERANCES ON :
 X=N/R X.X=N/R X.XX =N/R
 ANGLES=N/R HOLEDIA=N/R



INPAQ TECHNOLOGY CO., LTD.

SCALE : N/R
 DRAWN BY : 郭副哲
 DESIGNED BY : 陳武君

UNIT : mm
 CHECKED BY : 劉維林
 APPROVED BY : 謝立庭

THIS DRAWINGS AND SPECIFICATIONS ARE THE PROPERTY OF INPAQ TECHNOLOGY CO.,LTD.AND SHALL NOT BE REPRODUCED OR USED AS THE BASIS FOR THE MANUFACTURE OR SALE OF APPARATUS OR DEVICES WITHOUT PERMISSION

TITLE : ACH-2455-A1-MF-S Specification

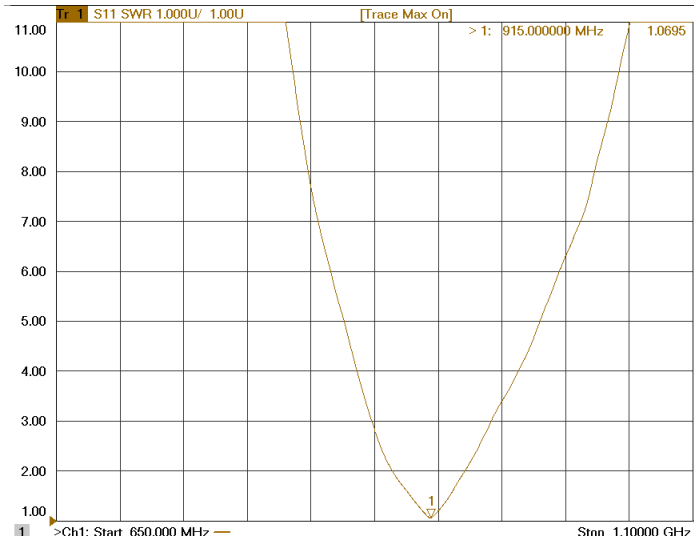
DOCUMENT NO.

ENS000119580

SPEC REV.
P1

5. Electrical Characteristics :

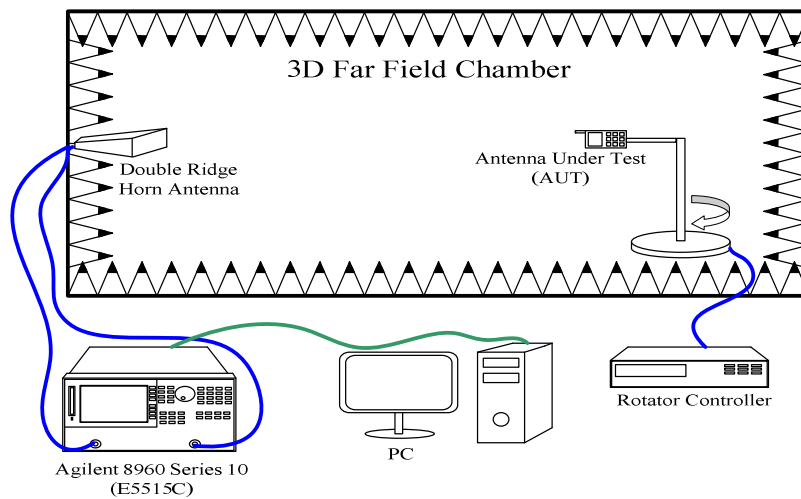
VSWR



Frequency (MHz)	VSWR
915	1.06

Radiation Pattern

The Gain pattern is measured in INPAQ's FAR-field chamber. DUT is placed on the table of rotator, a standard horn antenna and Vector Network Analyzer is used to collect data.



3D Chamber Definition

UNLESS OTHER SPECIFIED TOLERANCES ON :
 X=N/R X.X=N/R X.XX =N/R
 ANGLES=N/R HOLEDIA=N/R



INPAQ TECHNOLOGY CO., LTD.

SCALE : N/R UNIT : mm
 DRAWN BY : 郭副哲 CHECKED BY : 劉維林
 DESIGNED BY : 陳武君 APPROVED BY : 謝立庭

THIS DRAWINGS AND SPECIFICATIONS ARE THE PROPERTY OF INPAQ TECHNOLOGY CO.,LTD.AND SHALL NOT BE REPRODUCED OR USED AS THE BASIS FOR THE MANUFACTURE OR SALE OF APPARATUS OR DEVICES WITHOUT PERMISSION

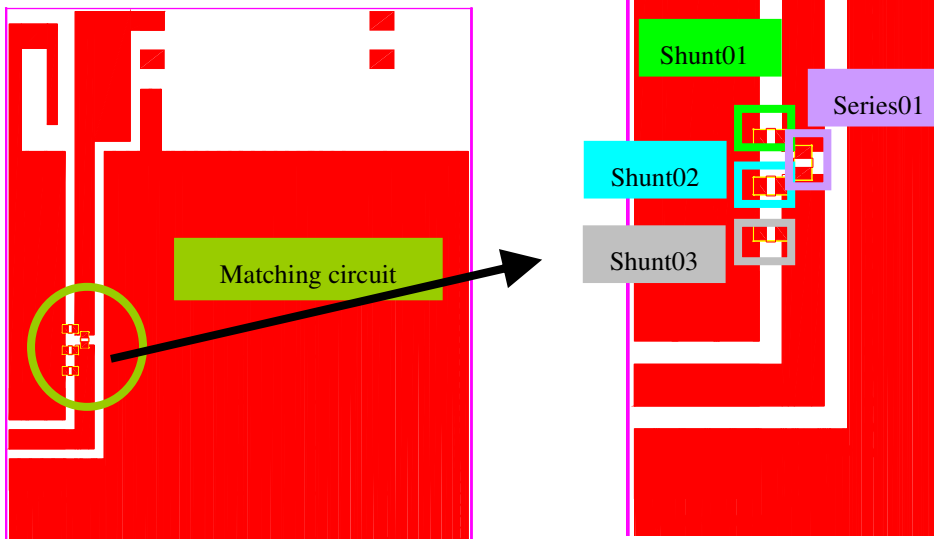
TITLE : ACH-2455-A1-MF-S Specification

DOCUMENT NO.	ENS000119580	SPEC REV. P1
--------------	--------------	--------------

Efficiency & Peak Gain

Frequency (MHz)	Peak Gain (dBi)	Efficiency (%)
900	2.01	71.61
915	2.38	75.78
928	1.86	70.59

Matching Circuit on Demoboard



Circuit Symbol	Size	Description
Series01	0402	2.7 nH Inductor
Shunt03	0402	4.7 pF Capacitance

UNLESS OTHER SPECIFIED TOLERANCES ON :
 X=N/R X.X=N/R X.XX =N/R
 ANGLES=N/R HOLEDIA=N/R



INPAQ TECHNOLOGY CO., LTD.

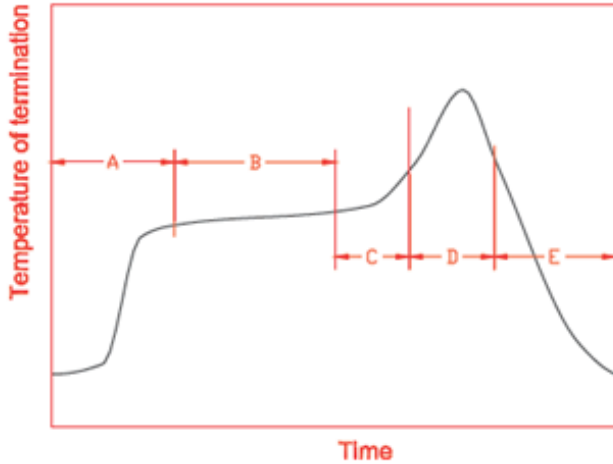
SCALE : N/R UNIT : mm
 DRAWN BY : 郭副哲 CHECKED BY : 劉維林
 DESIGNED BY : 陳武君 APPROVED BY : 謝立庭

THIS DRAWINGS AND SPECIFICATIONS ARE THE PROPERTY OF INPAQ TECHNOLOGY CO.,LTD.AND SHALL NOT BE REPRODUCED OR USED AS THE BASIS FOR THE MANUFACTURE OR SALE OF APPARATUS OR DEVICES WITHOUT PERMISSION

TITLE : ACH-2455-A1-MF-S Specification

DOCUMENT NO.	ENS000119580	SPEC REV.
		P1

6. Recommended reflow soldering :



A	1 st rising temperature	The normal to Preheating temperature	30s to 60s
B	Preheating	140°C to 200°C	90s to 120s
C	2 nd rising temperature	Preheating to 217°C	30s to 60s
D	Main heating	240°C ~ 260°C	20s to 40s
E	Regular cooling	200°C to 100°C	3°C/s ~ 6C/s

UNLESS OTHER SPECIFIED TOLERANCES ON :
 X=N/R X.X=N/R X.XX =N/R
 ANGLES=N/R HOLEDIA=N/R



INPAQ TECHNOLOGY CO., LTD.

SCALE : N/R	UNIT : mm
DRAWN BY : 郭副哲	CHECKED BY : 劉維林
DESIGNED BY : 陳武君	APPROVED BY : 謝立庭

THIS DRAWINGS AND SPECIFICATIONS ARE THE PROPERTY OF INPAQ TECHNOLOGY CO.,LTD.AND SHALL NOT BE REPRODUCED OR USED AS THE BASIS FOR THE MANUFACTURE OR SALE OF APPARATUS OR DEVICES WITHOUT PERMISSION

TITLE : ACH-2455-A1-MF-S Specification

DOCUMENT NO.	ENS000119580	SPEC REV. P1
--------------	--------------	--------------