

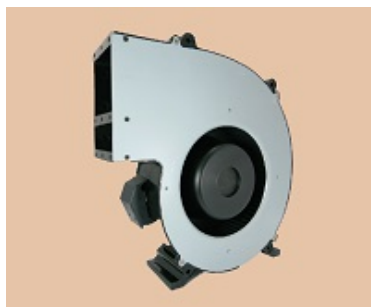


Language

ENGLISH

[Home](#) [About Sinwan](#) [Technical Support](#) [Contact Us](#)
[AC Fans](#) [DC Fans](#) [EC Fans](#) [IP68/IP69K Fans](#) [Heat-Resistant Fans](#) [Reversible Flow Fans](#) [Fan Accessories](#) [Motors](#)

Print page

**·AC· SB960AP**

# 330x330x89mm

## 380~110 CFM

Model No	Rated Volt	Voltage Range	Freq	Input Power	Ref. Speed	Max.Airflow		Max.Static Pressure		Noise Level	PQ
	VAC	VAC	Hz	Watt	RPM	CFM	m3/min	Inch/H2O	mm	db(A)	
SB960AP-11-2	115	100~120	50/60	300/350	2200/2300	350/380	9.9/10.8	1.3/1.5	33.02/38.1	66	2/1
SB960AP-11-3** (4P)	115	100~120	50/60	80/115	1450/1600	225/245	6.4/6.9	0.74/1.15	18.8/29.21	53	4/3
SB960AP-11-2/3 dual speed	115	100~120	50/60	300/350	2200/2300	350/380	9.9/10.8	1.3/1.5	33.02/38.1	66	2/1
SB960AP-11-3/4/5 triple speed	115	100~120	50/60	80/115	1450/1600	230/255	6.5/7.2	0.76/1.1	19.3/27.94	53	4/3
				80/115	1370/1450	215/230	6.1/6.5	0.78/0.95	19.81/24.13	55	4/3
				75/80	965/660	160/120	4.5/3.4	0.6/0.45	15.24/11.43	48	6/5
SB960AP-22-2	230	200~240	50/60	300/350	2200/2300	350/380	9.9/10.8	1.3/1.5	33.02/38.1	66	2/1
				80/115	1400/1500	225/245	6.4/6.9	0.73/1.1	18.54/27.94	53	4/3
				80/115	1450/1600	230/270	6.5/7.6	0.8/1.05	20.32/26.67	58	4/3
SB960AP-22-2/3 dual speed	230	200~240	50/60	300/350	2200/2300	350/380	9.9/10.8	1.3/1.5	33.02/38.1	65	2/1
				80/115	1450/1600	230/270	6.5/7.6	0.8/1.05	20.32/26.67	58	4/3
				80/115	1370/1450	215/230	6.1/6.5	0.78/0.95	19.81/24.13	55	4/3
SB960AP-22-3/4/5 triple speed	230	200~240	50/60	75/80	965/660	160/120	4.5/3.4	0.6/0.45	15.24/11.43	48	6/5
				68/63	830/650	130/110	3.7/3.1	0.5/0.42	12.7/10.67	43	8/7
				68/63	830/650	130/110	3.7/3.1	0.5/0.42	12.7/10.67	43	8/7

- \*\* = "WB" for wire lead type Ball bearing, or "TB" for terminal type Ball bearing
- 100, 200, 240V or special voltages 12, 24, 28, 38, 42, 48, 380~440~480... 50/60Hz, & dual voltage version available on request.
- Dual speed High/Medium 1/2, High/Low 1/3, Medium/Low 2/3, Low/extra Low 3/4 or triple speed 1/2/3 available on request.
- Sinwan reserves the right to change data and improve electrical or mechanical design without notice, data tolerance +-10%

**Motor**

Motor Type: Capacitor induction, inner rotor, 1-phase

Burnout Protection: Thermally protected

IP Protection:

**Mechanical**

Frame: Aluminum die cast, black color cosmetics, steel plate housing cover

Impeller: Glass fiber reinforced plastic, rated UL94V-0

Bearing: Two ball bearings

Rotation: CCW seen on rotor

Connection: Wire lead or terminal flat pin connecting

Weight: 5,900Gm (13 Lbs)

**Electronical**

Dielectric Strength: Over 1 min. at 1,500 VAC, 0.5mA, 50/60 Hz

Insulation Resistance: Over 100 MΩ at DC 500V

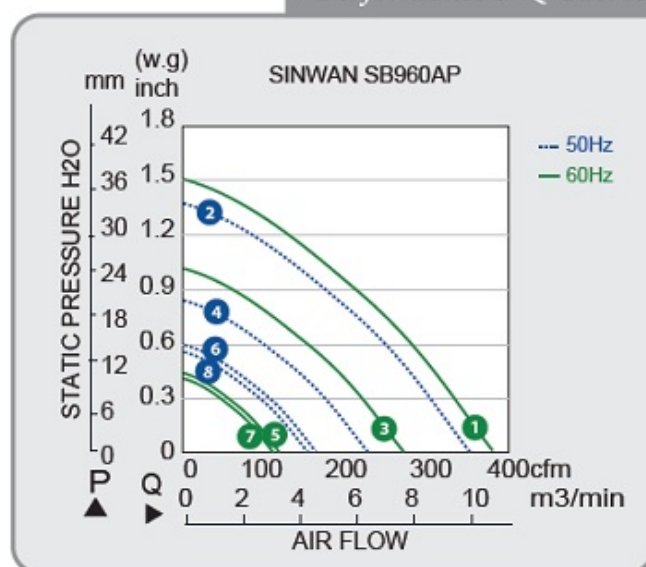
Signal Output: Optional: R/D alarm output, tachometer output

**Environment**

Operating Temp: Ambient non-condensing -20~+65C

Storage Temp:

Life Expectancy: L10 70K hours at +45C, 35K hours at +60C

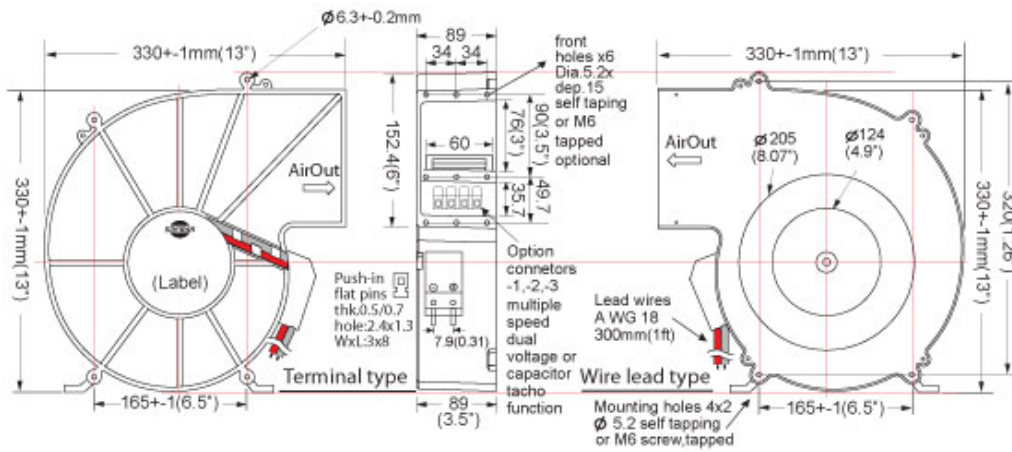
**Performance P-Q Curves**



Nomenclature

F/G  
TachR/D  
AlarmDual  
VoltageMultiple  
Speed

## ▶ Outline Dimensions



Relevant products

Metal Fan Guard  
G180-11

Sinwan Electric Industries Co., Ltd.

Email: [sinwanfan@sinwan.com.tw](mailto:sinwanfan@sinwan.com.tw)

TEL: 886-2-26620728

FAX: 886-2-26627019