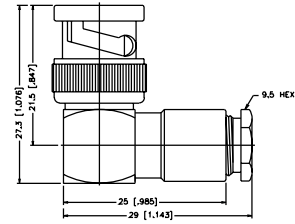


**Right Angle Clamp Plug - Standard Cable**

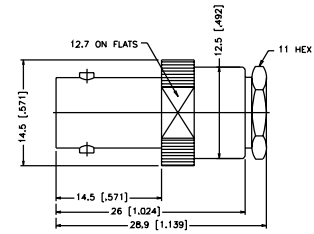
| P.N.              | Cable Group | Plt.   | Ins.   | Imp. | Crimp Tool |
|-------------------|-------------|--------|--------|------|------------|
| Brass Shell       |             |        |        |      |            |
| B1142E1-ND3G-1-50 | 01          | Nickel | Delrin | 50   | N/A        |
| B1142E1-ND3G-3-50 | 03          | Nickel | Delrin | 50   | N/A        |
| B1142E1-ND3G-3-75 | 03          | Nickel | Delrin | 75   | N/A        |



Assembly Instruction M - page 239

**Straight Clamp Jack - Captive contact - Standard Cable**

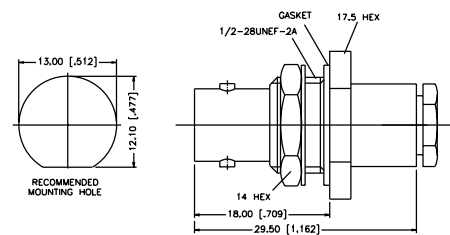
| P.N.               | Cable Group | Plt.   | Ins.   | Imp. | Crimp Tool |
|--------------------|-------------|--------|--------|------|------------|
| B6141A1-NT3G-1-50  | 01          | Nickel | Teflon | 50   | N/A        |
| B6141A1-NT3G-3-50  | 03          | Nickel | Teflon | 50   | N/A        |
| B6141A1-NT3G-3-75  | 03          | Nickel | Teflon | 75   | N/A        |
| B6141A2-NT3G-7A-50 | 07A         | Nickel | Teflon | 50   | N/A        |



Assembly Instruction N - page 240

**Bulkhead Clamp jack - Captive Contact - Flexible Cable**

| P.N.              | Cable Group | Plt.   | Ins.   | Imp. | Crimp Tool |
|-------------------|-------------|--------|--------|------|------------|
| B6441A2-NT3G-1-50 | 01          | Nickel | Teflon | 50   | N/A        |



Assembly Instruction N - page 240