



4RREu25 250x56R

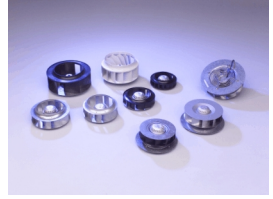
D21-A0 p



DATA SHEET

release. f - Revision 09-2017

Voltage	Frequency	Input Power	Input Current	Capacitor	Airflow	Rotation speed	Acoustic level	Direction rotation	Admissible Temperature
V	Hz	W	A	µF	m³/h	RPM	dBA		Min/Max
230	50	47	0,22	1,5	865	1415	56	R	-40°C / +70°C
230	60	55	0,24	1,5	1010	1665	61	R	-40°C / +70°C
230	50				509 CFM				-40°F / 158°F
230	60				594 CFM				-40°F / 158°F



dBa : free blowing

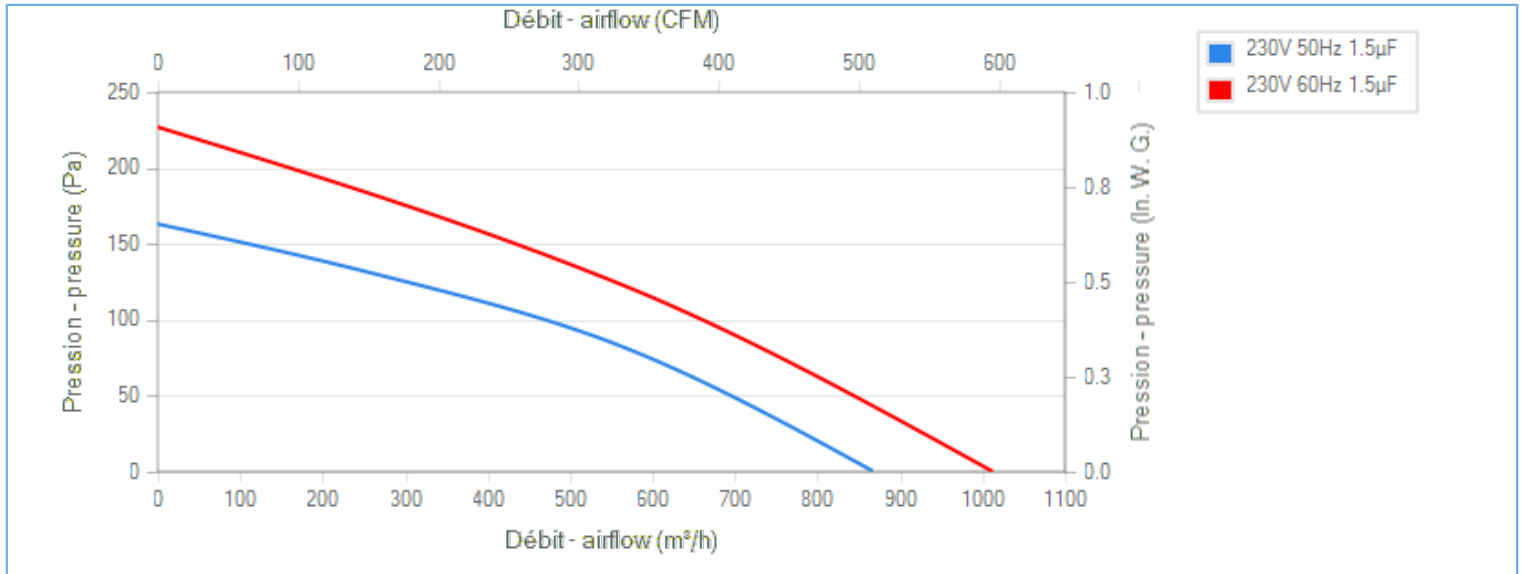
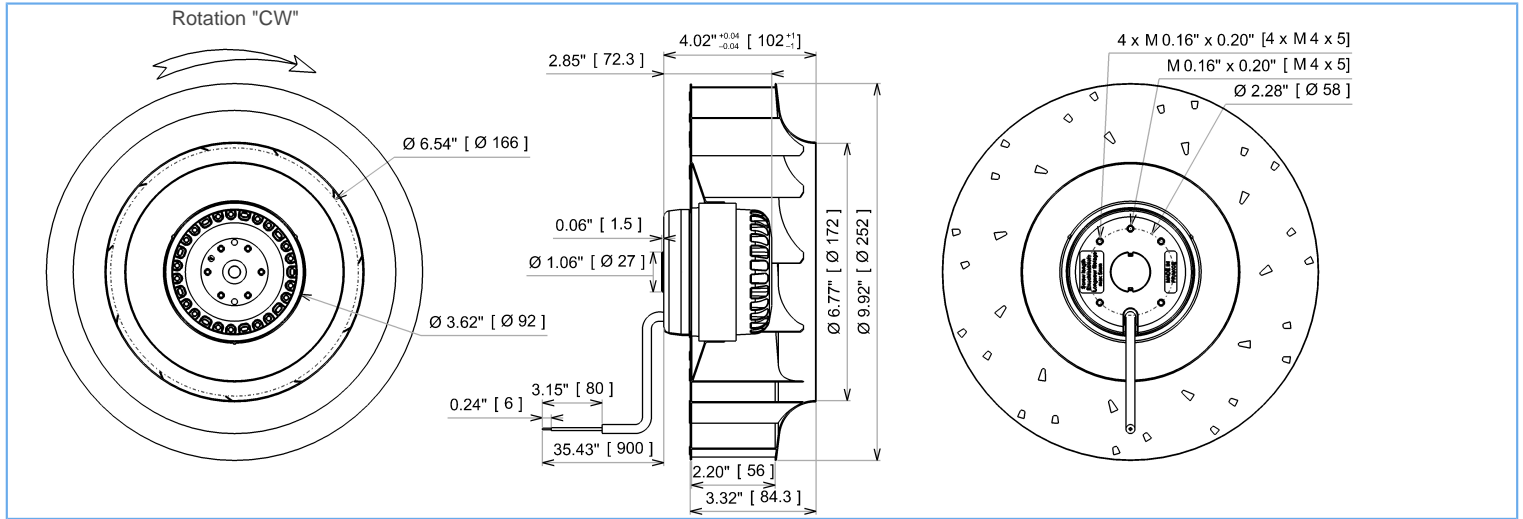
NA : not applicable

ErP 2013

NA

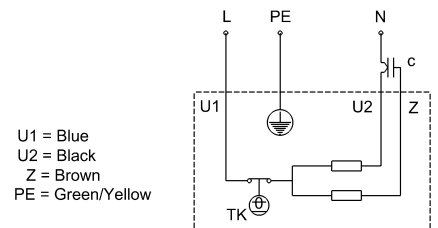
ErP 2015

NA



Description

- .Weight : 2,6 Kg
- .Ball bearing
- .Class F, thermally protected
- .IP44 protection depending on installation and position as per EN60034-5
- .G2.5 balancing
- .Rotor : black paint
- .Galvanized steel impeller



Non contractual document. All specifications are subject to change without prior notice. Picture for information only.



4RREu25 250x56R

D21-A0 p



DATA SHEET

release. f - Revision 09-2017

Data in accordance to ErP directive

Voltage	230	V
Frequency	50	Hz
Power	0,051	kW ⁽¹⁾
Airflow	530	m ³ /h ⁽¹⁾
Pressure	89	Pa ⁽¹⁾
Rotation speed	1354,5	RPM ⁽¹⁾

(1) at optimal efficiency point

ErP directive (EU 2009/125/EC) not applicable :
Power at optimum energy efficiency point

Accessories

- 19208
- 19208
- 21360
- 16114

Measurement setup

16114 M07-457 PAVILLON Dia Int.164 Ext.255 Galv.

Documents

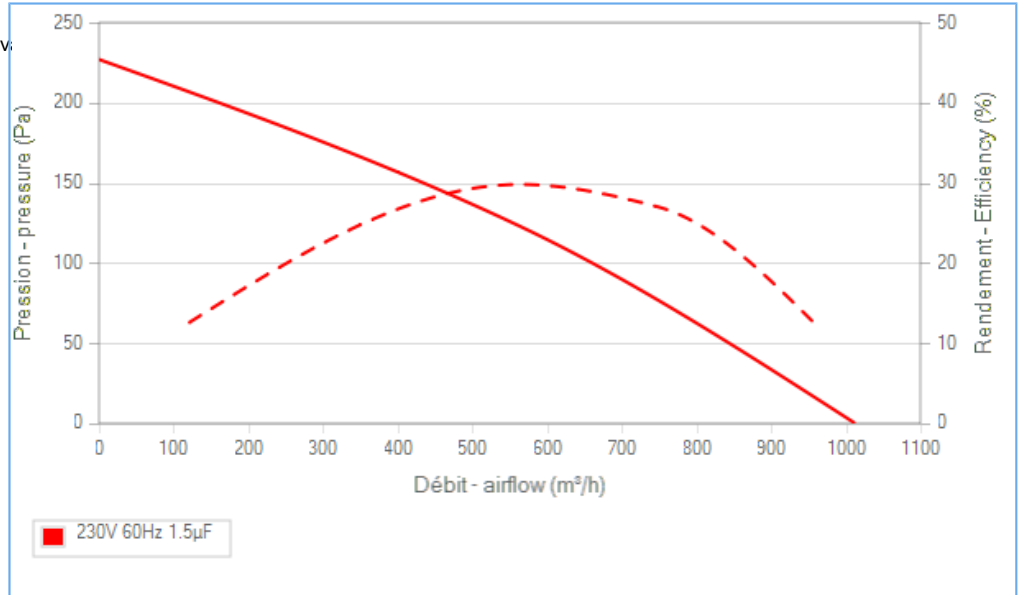
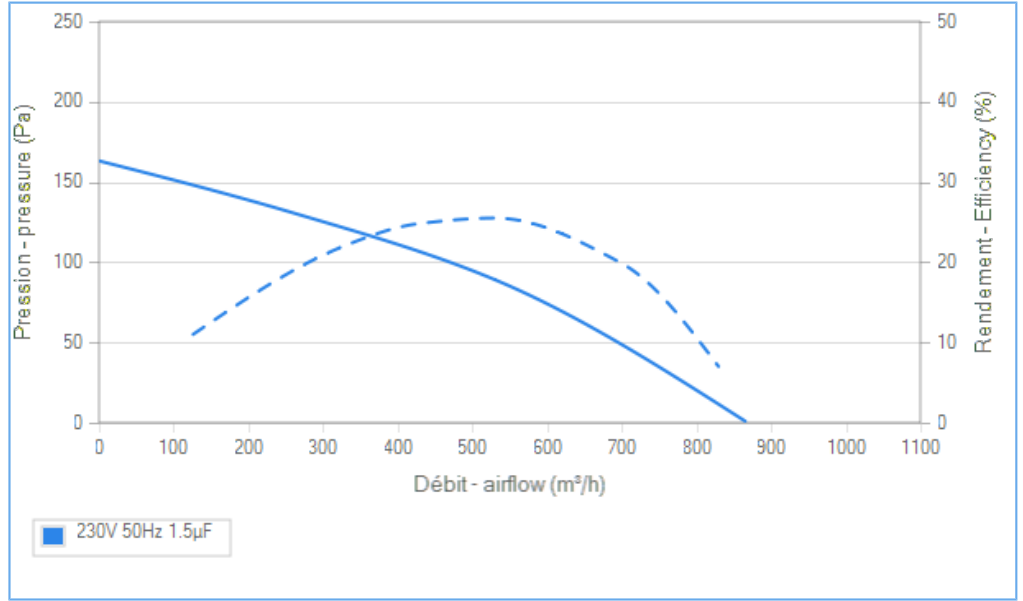
- Manuel d'utilisation
www.ecofit.com/site/normes
- Operating and recycling manual
www.ecofit.com/anglais/normes



UL2111 (XEWR2,8)
N° file E135223
4RS925



A041865
4RS925CN



Non contractual document. All specifications are subject to change without prior notice. Picture for information only.