



4GREu25 160x62R

C45-C2 p



**DATA SHEET**

release. e - Revision 11-2018

Voltage	Frequency	Input Power	Input Current	Capacitor	Airflow	Rotation speed	Acoustic level	Direction rotation	Admissible Temperature
V	Hz	W	A	µF	m³/h	RPM	dBA		Min/Max
230	50	71	0,31	2,0	420	1270	54	R	-40°C / +70°C
230	60	88	0,39	2,0	470	1390	56	R	-40°C / +70°C
230	50				247 CFM				-40°F / 158°F
230	60				276 CFM				-40°F / 158°F



dBa : free blowing

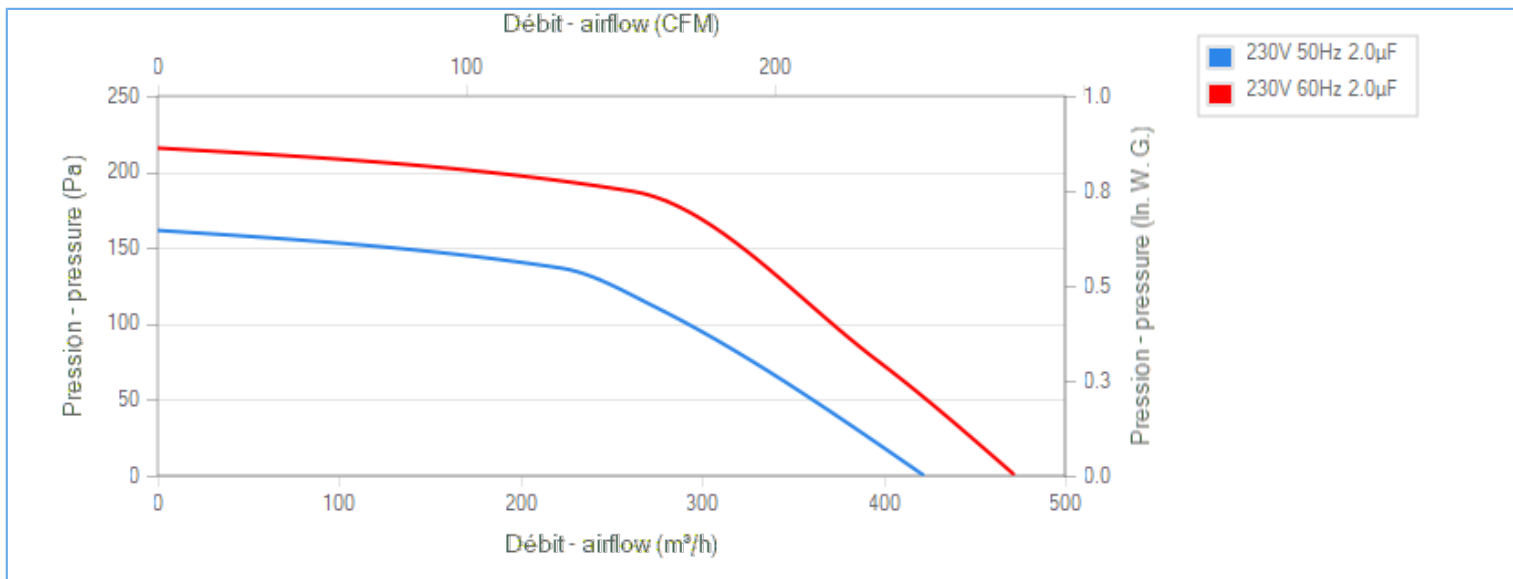
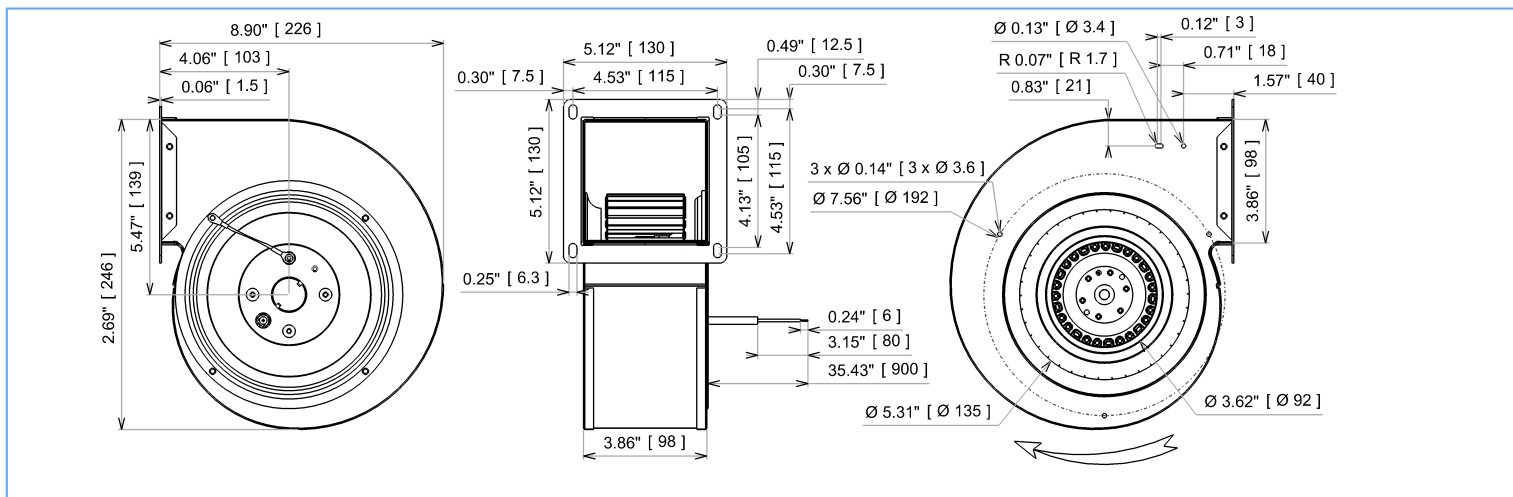
NA : not applicable

ErP 2013

NA

ErP 2015

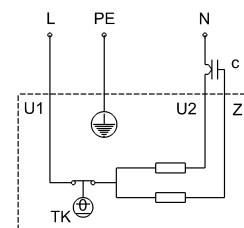
NA



**Description**

- .Weight : 3,1 Kg
- .Ball bearing
- .Class F, thermally protected
- .IP44 protection depending on installation and position as per EN60034-5
- .G2.5 balancing
- .Galvanized steel impeller
- .Rotor : black paint
- .Scroll housing : black paint
- .Motor - UL Recognized component

U1 = Blue  
 U2 = Black  
 Z = Brown  
 PE = Green/Yellow





# DATA SHEET

release. e - Revision 11-2018

## Data in accordance to ErP directive

Voltage	230	V
Frequency	50	Hz
Power	0,060	kW <sup>(1)</sup>
Airflow	249	m <sup>3</sup> /h <sup>(1)</sup>
Pressure	124	Pa <sup>(1)</sup>
Rotation speed	1372	RPM <sup>(1)</sup>
(1) at optimal efficiency point		

ErP directive (EU 2009/125/EC) not applicable :  
Power at optimum energy efficiency point

## Accessories

- 19217
- 19217
- 21325
- 16154

## Measurement setup

Contact ECOFIT

## Documents

Manuel d'utilisation  
[www.ecofit.com/site/normes](http://www.ecofit.com/site/normes)

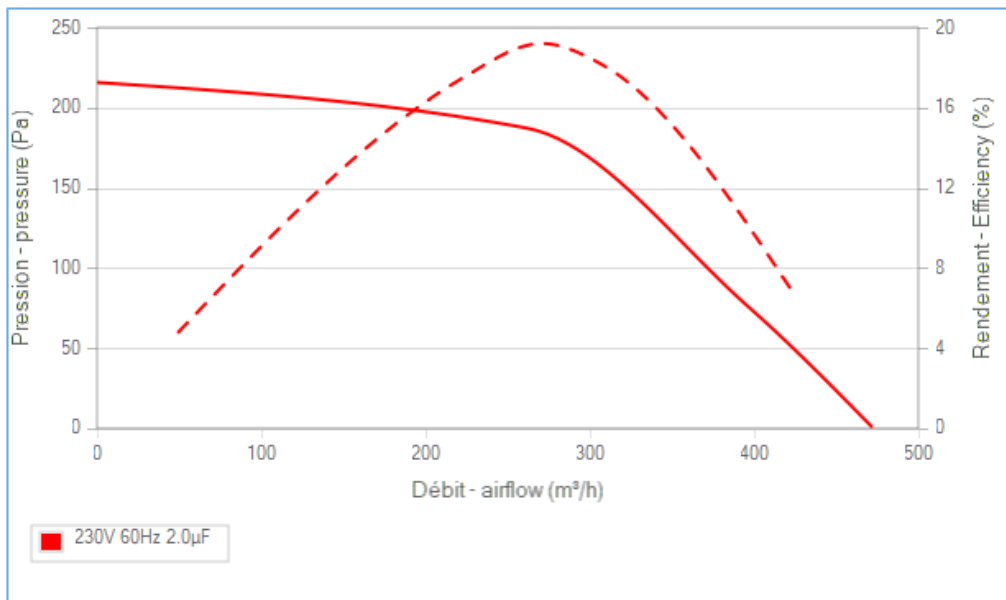
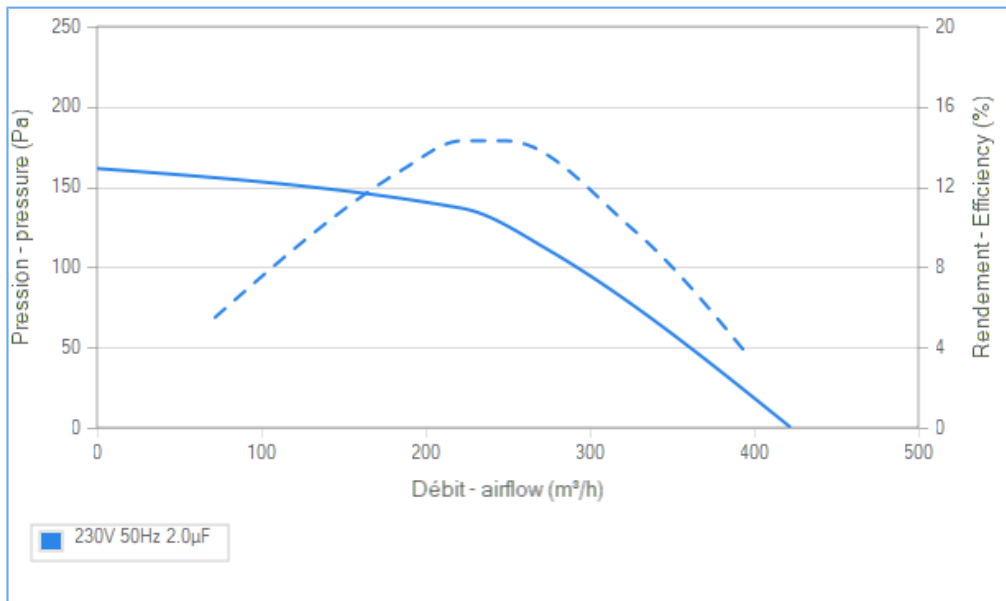
Operating and recycling manual  
[www.ecofit.com/anglais/normes](http://www.ecofit.com/anglais/normes)



UL2111 (XEWR2,8)  
N° file E135223  
4RS925



A041865  
4RS925CN



Non contractual document. All specifications are subject to change without prior notice. Picture for information only.