



2RRMu35 225x50R

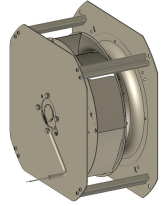
P12-A2 p



DATA SHEET

release. b - Revision 06-2018

Voltage	Frequency	Input Power	Input Current	Capacitor	Airflow	Rotation speed	Direction rotation	Admissible Temperature
V	Hz	W	A	µF	m³/h	RPM		Min/Max
230	50	96	0,42	4,0	1000	2665	R	-40°C / +70°C
230	60	137	0,62	4,0	1080	2880	R	-40°C / +70°C
230	50				588 CFM			-40°F / 158°F
230	60				635 CFM			-40°F / 158°F



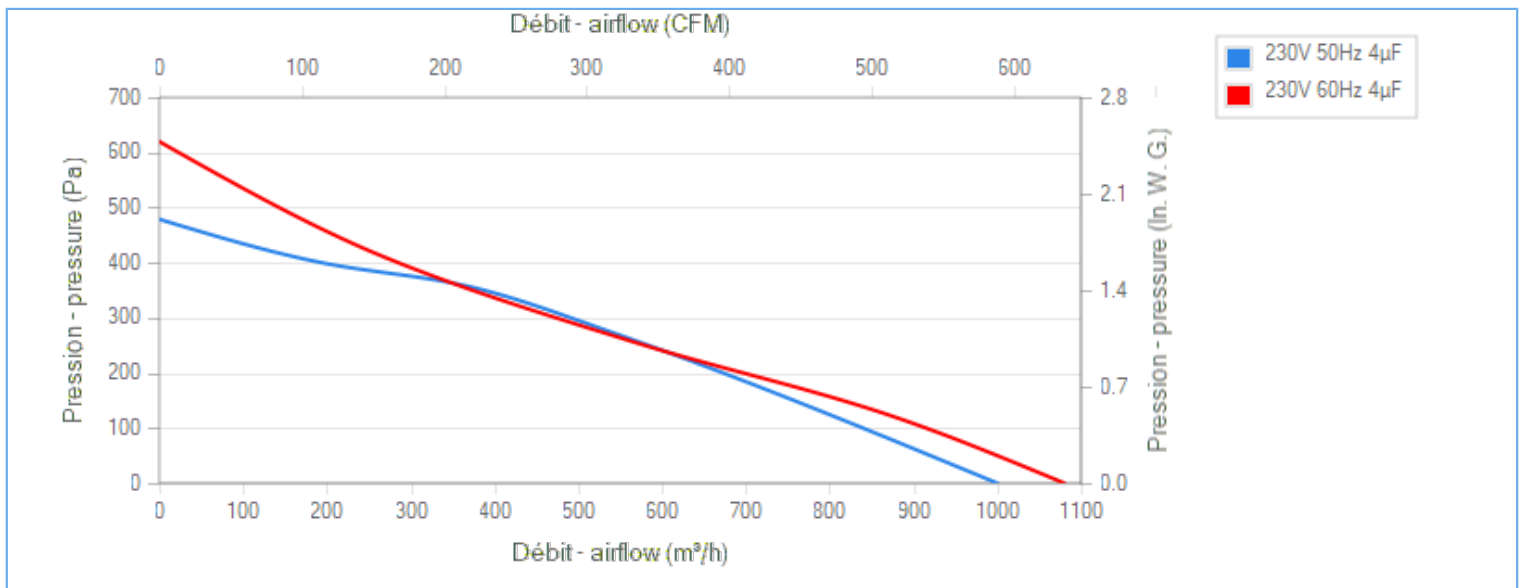
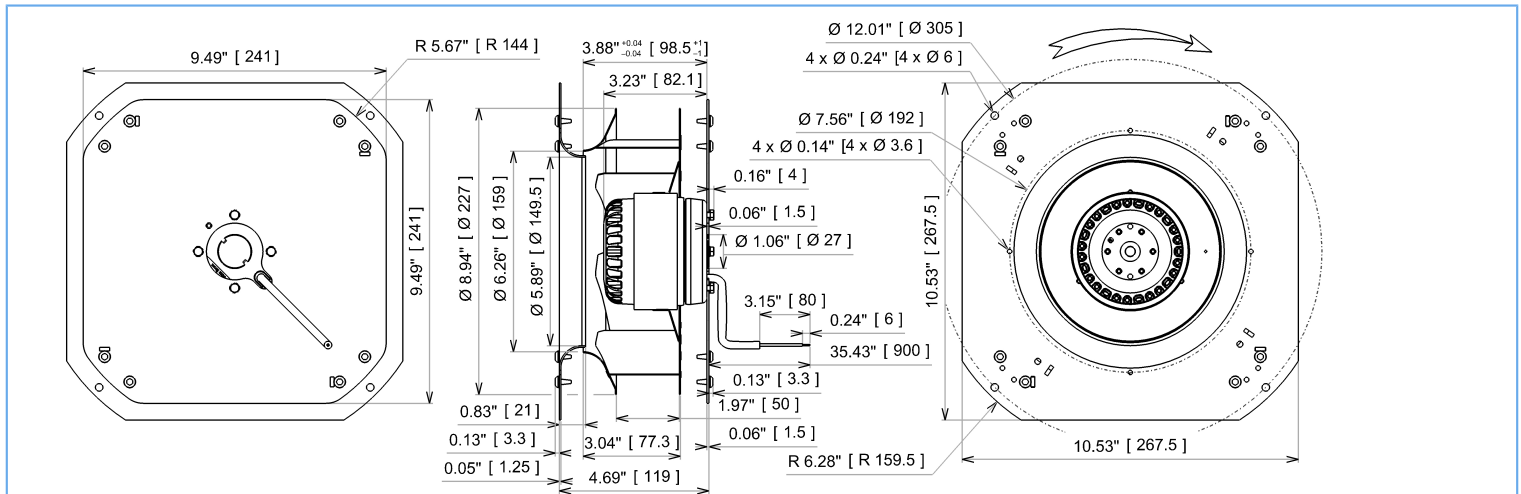
NA : not applicable

ErP 2013

NA

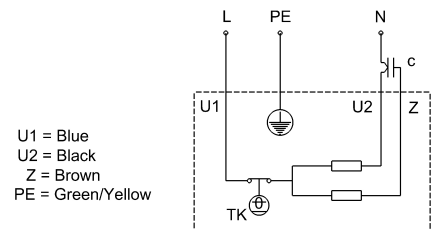
ErP 2015

NA



Description

- .Weight : 5,0 Kg
- .Ball bearing
- .Class F, thermally protected
- .IP44 protection depending on installation and position as per EN60034-5
- .G2.5 balancing
- .Rotor : black paint
- .Galvanized steel impeller





2RRMu35 225x50R

P12-A2 p



DATA SHEET

release. b - Revision 06-2018

Data in accordance to ErP directive

Voltage	230	V
Frequency	50	Hz
Power	0,124	kW ⁽¹⁾
Airflow	546	m ³ /h ⁽¹⁾
Pressure	271	Pa ⁽¹⁾
Rotation speed	2470	RPM ⁽¹⁾

(1) at optimal efficiency point

ErP directive (EU 2009/125/EC) not applicable :
Power at optimum energy efficiency point

Accessories

- 19220
- 19220
- 21194

Measurement setup

- 16214 Ouie Ø252 ext Ø153 int GALVA

Documents

Manuel d'utilisation

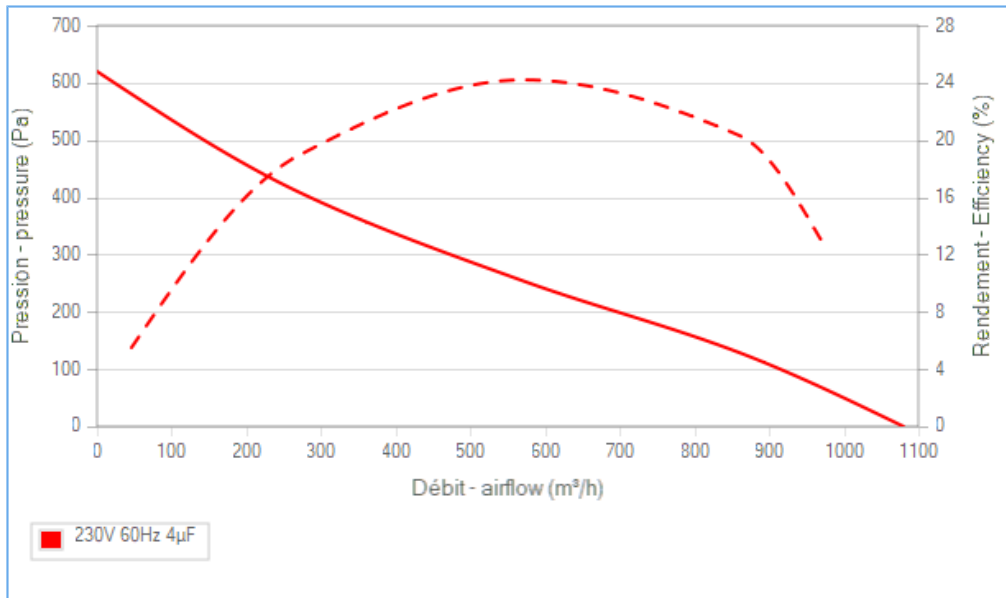
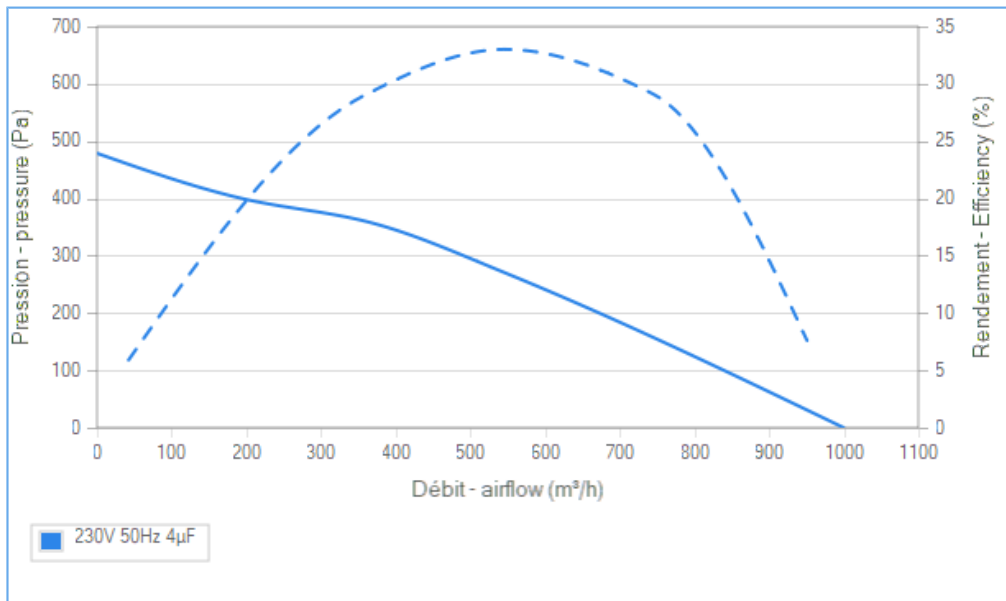
www.ecofit.com/site/normes

Operating and recycling manual

www.ecofit.com/anglais/normes



UL2111 (XEW2,8)
N° file E135223
2RS935



Non contractual document. All specifications are subject to change without prior notice. Picture for information only.