



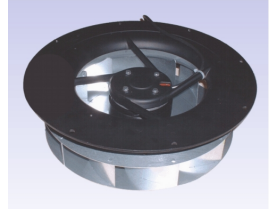
2RREu45 280x40R (Inv)

C36-B7

DATA SHEET

release. e - Revision 04-2017

Voltage	Frequency	Input Power	Input Current	Capacitor	Airflow	Rotation speed	Acoustic level	Direction rotation	Admissible Temperature
V	Hz	W	A	µF	m³/h	RPM	dBA	↻	Min/Max
230	50	215	0,97	7,0	1445	2625	77	R	-40°C / +70°C
230	60	282	1,23	7,0	1600	2895	80	R	-40°C / +70°C
230	50				850 CFM				-40°F / 158°F
230	60				941 CFM				-40°F / 158°F



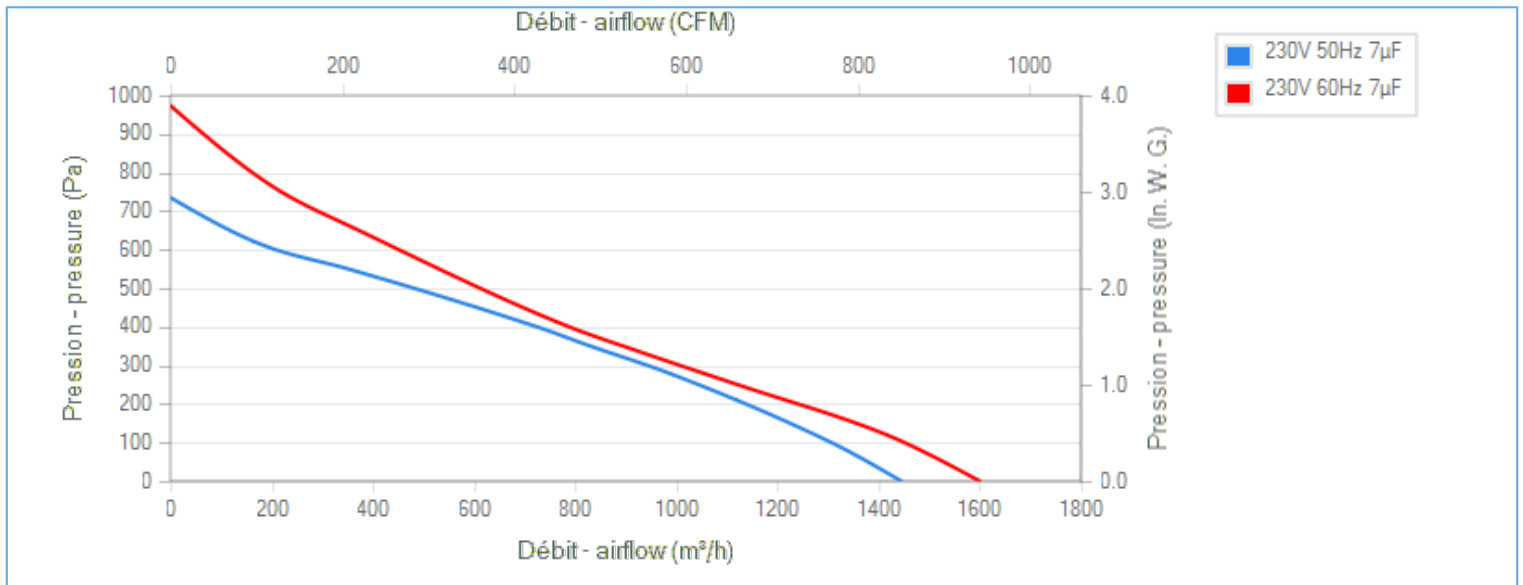
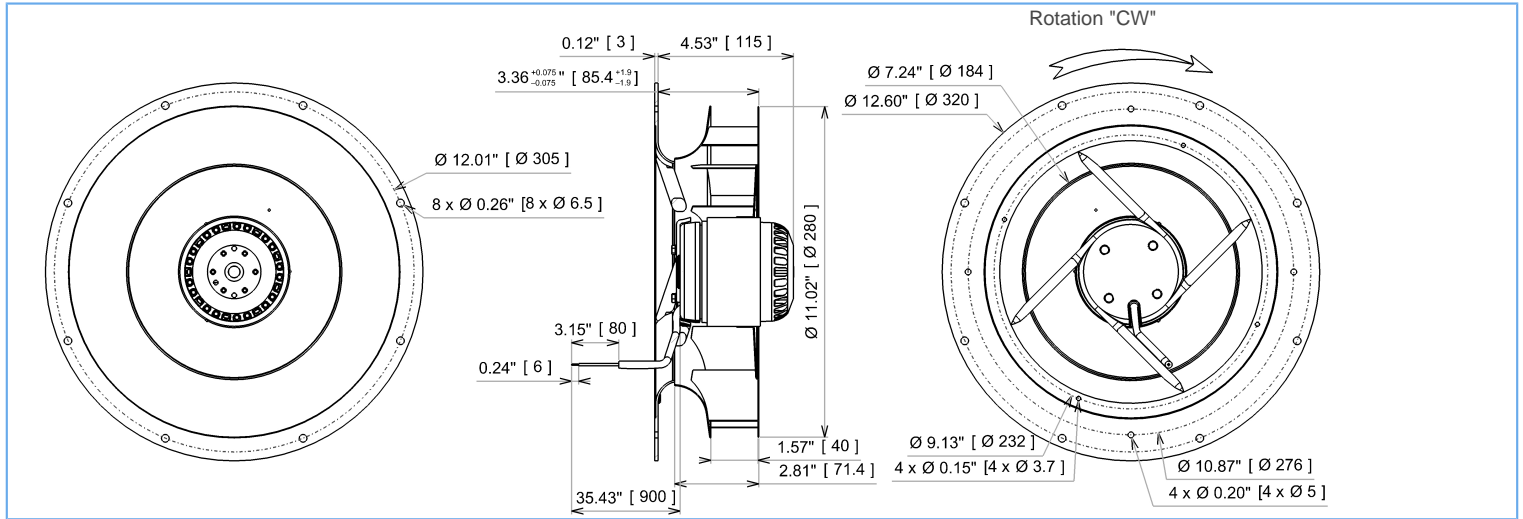
dBA : free blowing

ErP 2013

NOK

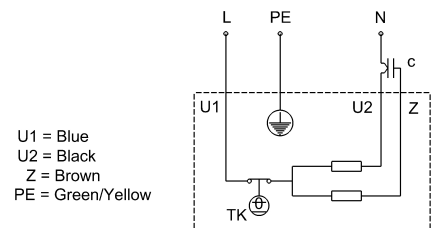
ErP 2015

NOK



Description

- .Weight : 4,5 Kg
- .Ball bearing
- .Class F, thermally protected
- .IP44 protection depending on installation and position as per EN60034-5
- .G2.5 balancing
- .Galvanized steel impeller
- .Rotor : black paint
- .Black painted aluminium reversed-inletcone
- .Motor - UL Recognized component



Non contractual document. All specifications are subject to change without prior notice. Picture for information only.



2RREu45 280x40R (Inv)

C36-B7

DATA SHEET

release. e - Revision 04-2017

Data in accordance to ErP directive

Voltage	230	V
Frequency	50	Hz
Power	0,266	kW ⁽¹⁾
Airflow	723	m ³ /h ⁽¹⁾
Pressure	400	Pa ⁽¹⁾
Rotation speed	2420	RPM ⁽¹⁾
(1) at optimal efficiency point		

For service use only in Europe according ErP directive EU 2009/125/EC

Accessories

- 19227
- 19227
- 21360

Measurement setup

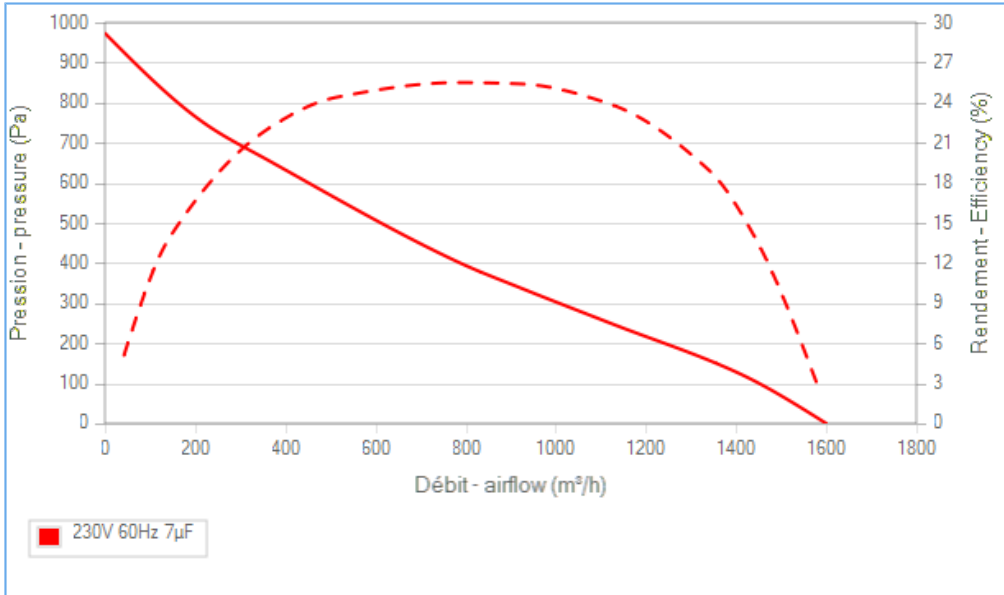
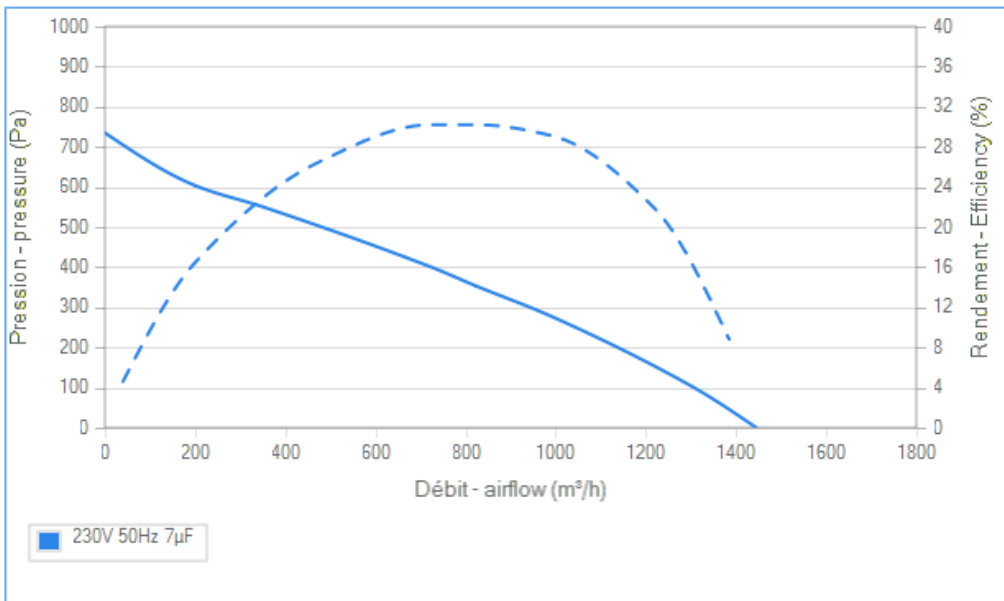
16192 M05-020 Ouie support moteur Ø184inter Ø320ext moulée Alu NOIRE

Documents

- Manuel d'utilisation
www.ecofit.com/site/normes
- Operating and recycling manual
www.ecofit.com/anglais/normes



UL2111 (XEW2,8)
N° file E135223
2RS945



Non contractual document. All specifications are subject to change without prior notice. Picture for information only.