

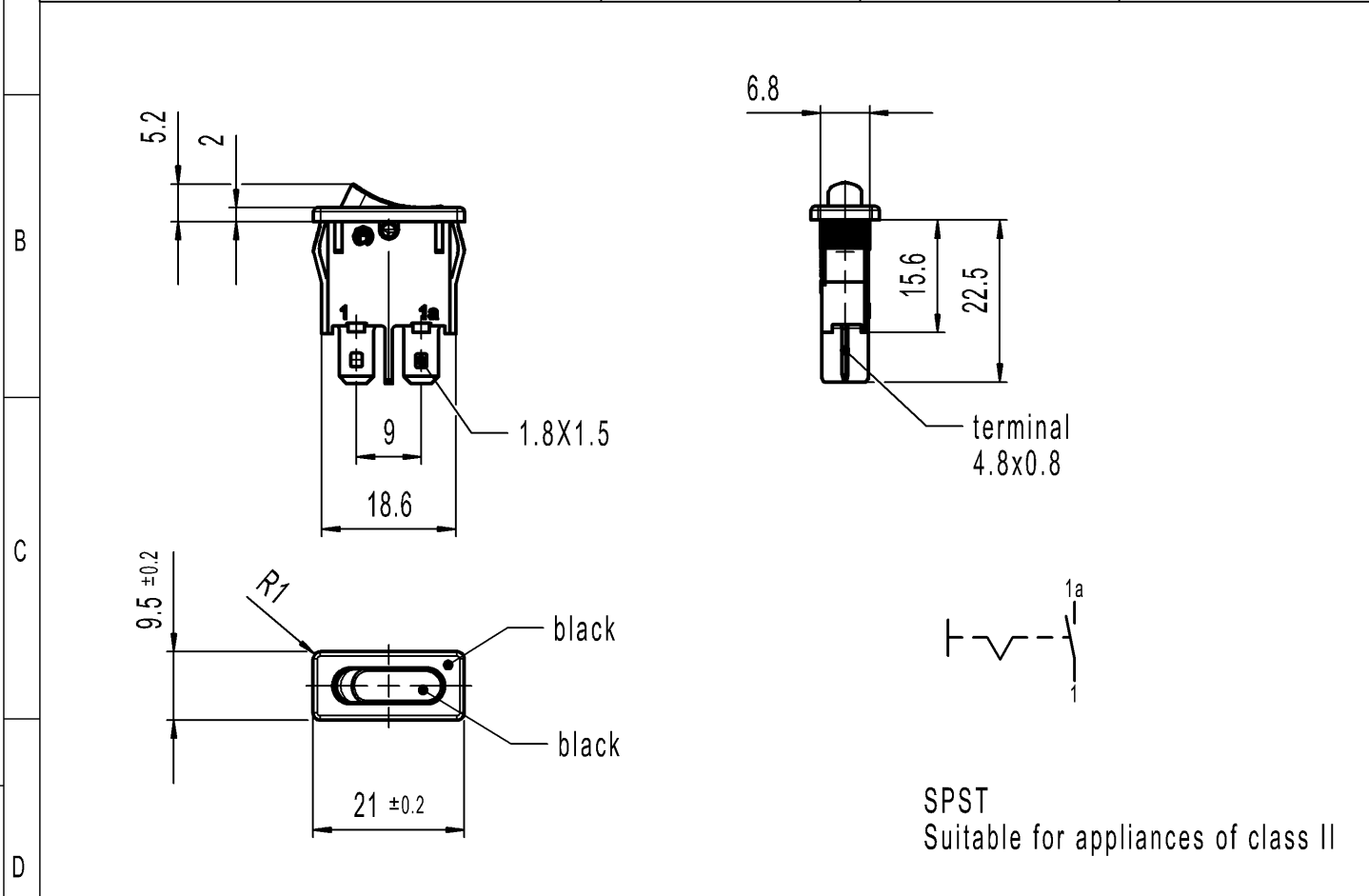
CONFIDENTIAL

VERTRAULICH

THIS DRAWING IS THE EXCLUSIVE PROPERTY OF MARQUARDT. WITHOUT THEIR CONSENT IT MAY NOT BE REPRODUCED OR GIVEN TO THIRD PARTIES.

Alle Rechte bei Marquardt, auch fuer den Fall von Schutzrechtsanmeldungen. Jede Verfertigungsbefugnis, wie Kopier- und Weitergaberecht, bei uns.

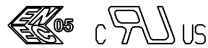
A	recommended cut-out for snap-in fixing (edge opposite to snap-in direction)	1	2	3	4
			wall thickness	length of cut-out	width of cut-out
			0.75 to 1.25	19.2 -0.1	6.8+0.1
			1.25 to 2	19.4 -0.1	6.8+0.1
		2 to 3	19.8 -0.1	6.8+0.1	



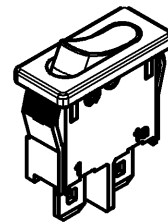
SPST  
Suitable for appliances of class II

Marking

1901.  
4(1)/250~5E4  
6(2)/250~  
T80/55



Code of manufacture: place/year/week



-		-		1901.1102-XX	
Figure		Type		Customer Part No.	
-		-		Art.No.-PI	
Shape and location	Angle $\pm 2^\circ$	Length		Sheet 01	
	Edge tolerance	0-6	$\pm 0.2$		
☉ ≡		>6-15	$\pm 0.4$		
		>15-30	$\pm 0.4$		
				Format DIN	Projection
				A4	
				Scale 1:1	
				All dimensions are in millimetres	
				Ident. K	
				Document number 19011102	
				Index j	
				Appliance Switch	
j	141238	2022-11-17		MOHITEN	
i	102884	2016-06-22		HHE	
h	43248	2005-05-12		hhe	
g	25497	1997-11-10		SIG	
Index	MEC-No.	Date (YYYY-MM-DD)		Edited by	
				System NX V1899	
				Replacement of	
				Zg.gl.Nr.v.18.03.1991	
				MARQUARDT	