



### General Description

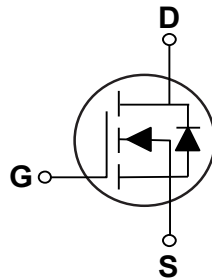
The advanced trench MOS technology has been especially tailored to minimize on-state resistance, provide superior switching performance, and withstand high energy pulse in the avalanche and converter applications.

$BV_{DSS}$	$R_{DS(ON)}$	$I_D$
30 V	2.2 m $\Omega$	85 A

### Features

- $R_{DS(ON)} \leq 2.2m\Omega @ V_{GS}=10V$
- Low Gate Charge
- Low  $R_{DS(ON)}$
- Green Device Available

PPAK5X6 Pin Configuration



### Applications

- Power Management in Desktop Computer
- DC/DC Converters

### Absolute Maximum Ratings $T_C=25^\circ\text{C}$ unless otherwise noted

Symbol	Parameter	Rating	Units
$V_{DS}$	Drain-Source Voltage	30	V
$V_{GS}$	Gate-Source Voltage	$\pm 20$	V
$I_D$	Drain Current – Continuous ( $T_C=25^\circ\text{C}$ )	85	A
	Drain Current – Continuous ( $T_C=100^\circ\text{C}$ )	67	A
$I_{DM}$	Drain Current – Pulsed (NOTE 1)	250	A
EAS	Single Pulse Avalanche Energy (NOTE 2)	151	mJ
IAS	Avalanche Current	55	A
$P_D$	Power Dissipation ( $T_C=25^\circ\text{C}$ ) (NOTE 3)	48	W
$T_J$	Operating Junction Temperature Range	-55 to 150	$^\circ\text{C}$
$T_{STG}$	Storage Temperature Range	-55 to 150	$^\circ\text{C}$
Marking Code		NC2P2	

### Thermal Characteristics

Symbol	Parameter	Typ.	Max.	Unit
$R_{\theta JA}$	Thermal Resistance Junction to Ambient	---	50	$^\circ\text{C}/\text{W}$
$R_{\theta JC}$	Thermal Resistance Junction to Case	---	2.6	$^\circ\text{C}/\text{W}$



Electrical Characteristics (T<sub>J</sub>=25°C, unless otherwise noted)

Off Characteristics

Symbol	Parameter	Conditions	Min.	Typ.	Max.	Unit
BV <sub>DSS</sub>	Drain-Source Breakdown Voltage	V <sub>GS</sub> =0V, I <sub>D</sub> =250uA	30	---	---	V
I <sub>DSS</sub>	Drain-Source Leakage Current	V <sub>DS</sub> =24V, V <sub>GS</sub> =0V, T <sub>J</sub> =25°C	---	---	1	uA
		V <sub>DS</sub> =24V, V <sub>GS</sub> =0V, T <sub>J</sub> =55°C	---	---	5	uA
I <sub>GSS</sub>	Gate-Source Leakage Current	V <sub>GS</sub> =±20V, V <sub>DS</sub> =0V	---	---	±100	nA

On Characteristics

Symbol	Parameter	Conditions	Min.	Typ.	Max.	Unit
R <sub>DS(ON)</sub>	Static Drain-Source On-Resistance	V <sub>GS</sub> =10V, I <sub>D</sub> =20A	---	1.8	2.2	mΩ
		V <sub>GS</sub> =4.5V, I <sub>D</sub> =20A	---	2.5	3.6	
V <sub>GS(th)</sub>	Gate Threshold Voltage	V <sub>GS</sub> =V <sub>DS</sub> , I <sub>D</sub> =250uA	1.2	1.6	2.2	V
g <sub>fs</sub>	Forward Transconductance	V <sub>DS</sub> =5V, I <sub>D</sub> =20A	---	91	---	S

Dynamic and switching Characteristics

Symbol	Parameter	Conditions	Min.	Typ.	Max.	Unit
Q <sub>g</sub>	Total Gate Charge (4.5V)	V <sub>DS</sub> =15V, V <sub>GS</sub> =10V, I <sub>D</sub> =20A	---	21	---	nC
Q <sub>gs</sub>	Gate-Source Charge		---	12.5	---	
Q <sub>gd</sub>	Gate-Drain Charge		---	14.5	---	
T <sub>d(on)</sub>	Turn-On Delay Time	V <sub>DD</sub> =15V, V <sub>GS</sub> =10V, R <sub>G</sub> =3.3Ω, I <sub>D</sub> =20A	---	12	---	nS
T <sub>r</sub>	Rise Time		---	6	---	
T <sub>d(off)</sub>	Turn-Off Delay Time		---	38.5	---	
T <sub>f</sub>	Fall Time		---	11.5	---	
C <sub>iss</sub>	Input Capacitance	V <sub>DS</sub> =15V, V <sub>GS</sub> =0V, F=1MHz	---	3032	---	pF
C <sub>oss</sub>	Output Capacitance		---	1588	---	
C <sub>rss</sub>	Reverse Transfer Capacitance		---	207	---	
R <sub>g</sub>	Gate resistance	V <sub>GS</sub> =0V, V <sub>DS</sub> =0V, F=1MHz	---	1.7	---	Ω

Drain-Source Diode Characteristics and Ratings

Symbol	Parameter	Conditions	Min.	Typ.	Max.	Unit
I <sub>S</sub>	Continuous Source Current	V <sub>G</sub> =V <sub>D</sub> =0V, Force Current	---	---	85	A
V <sub>SD</sub>	Diode Forward Voltage (NOTE 1)	V <sub>GS</sub> =0V, I <sub>S</sub> =1A, T <sub>J</sub> =25°C	---	---	1.2	V

NOTES :

1. The data tested by pulsed, pulse width ≤ 300us, duty cycle ≤ 2%.
2. The EAS data shows Max. rating. The test condition is V<sub>DD</sub>=25V, V<sub>GS</sub>=10V, L=0.1mH, I<sub>AS</sub>=55A.
3. The power dissipation is limited by 150°C junction temperature.
4. The data is theoretically the same as I<sub>D</sub> and I<sub>DM</sub>, in real applications, should be limited by total power dissipation.



Characteristics Curves

FIG.1-Typical Output Characteristics

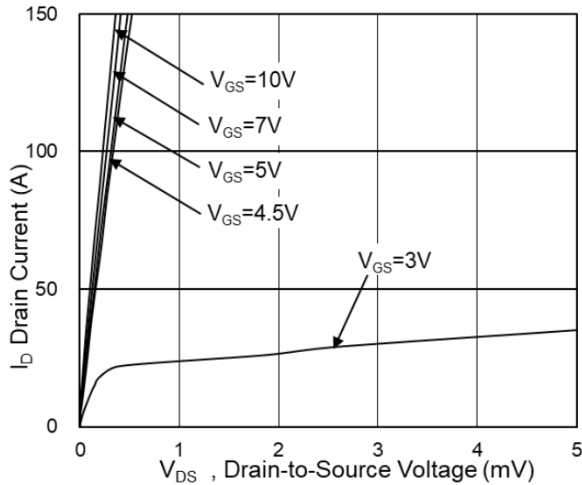


FIG.2-On-Resistance vs. G-S Voltage

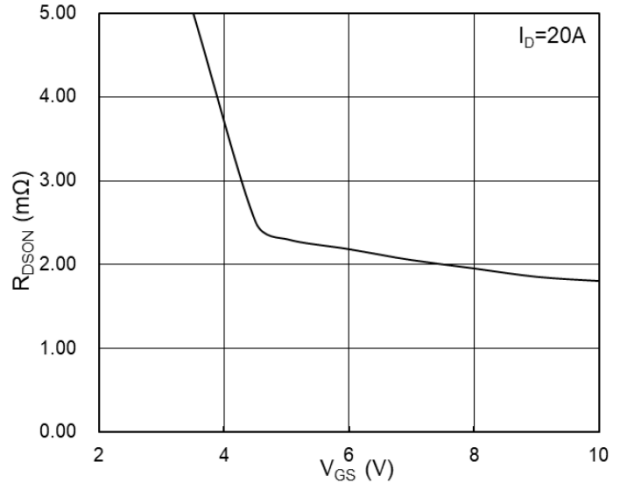


FIG.3-Source Drain Forward Characteristics

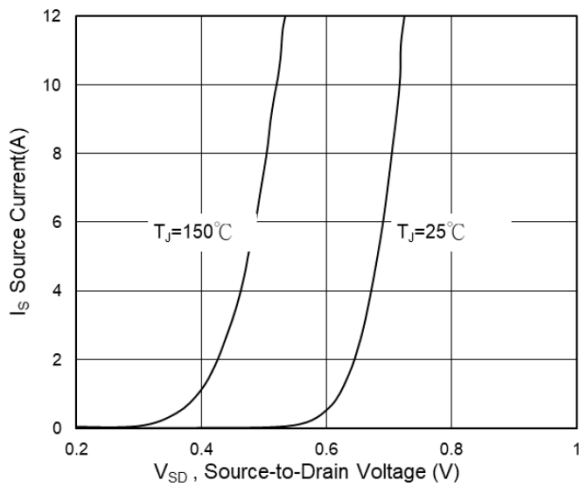


FIG.4-Gate Charge Characteristics

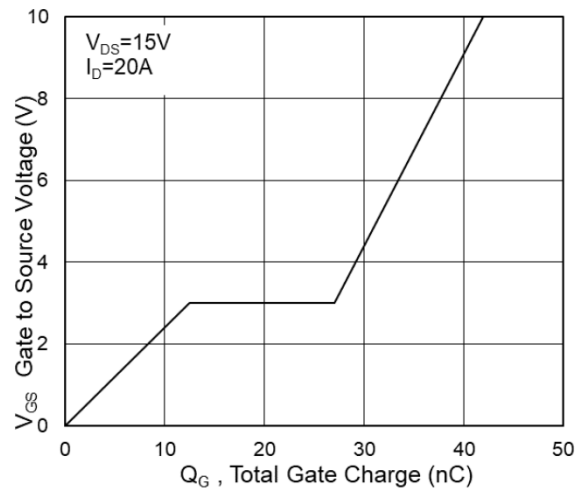


FIG.5-Normalized  $V_{GS(th)}$  vs.  $T_J$

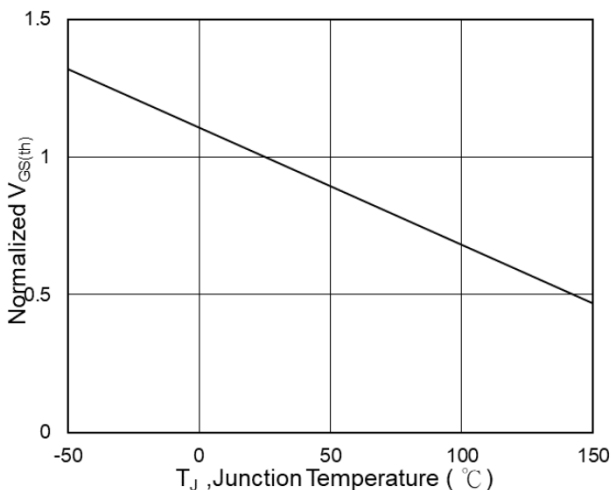
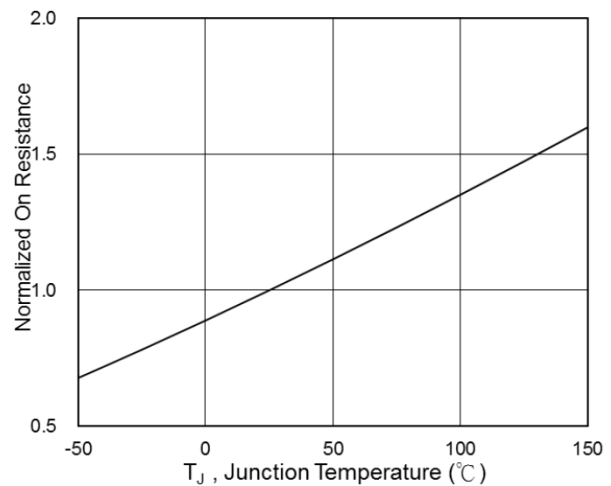


FIG.6-Normalized  $R_{DS(on)}$  vs.  $T_J$





Characteristics Curves

FIG.7-Switching Time Waveform

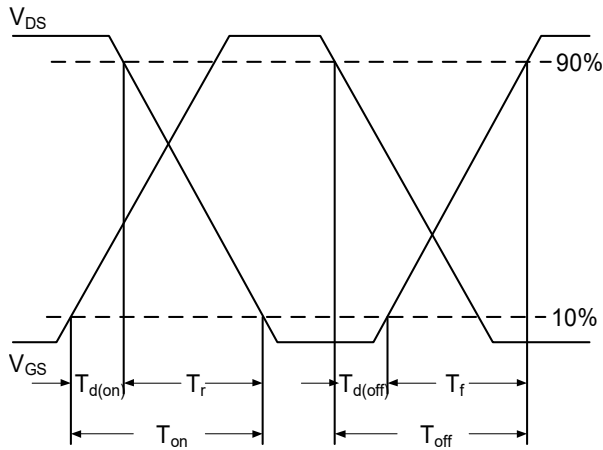
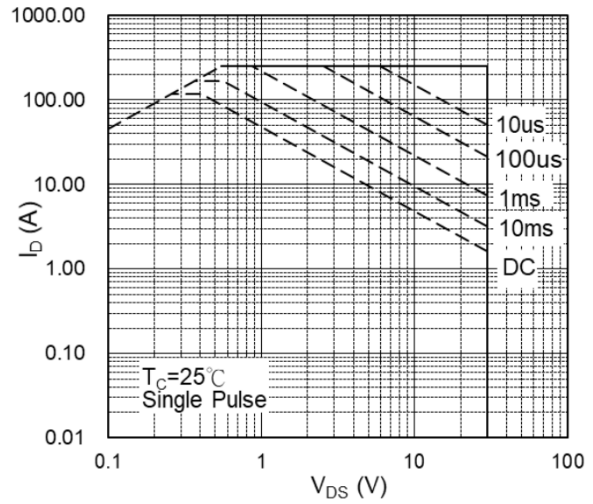
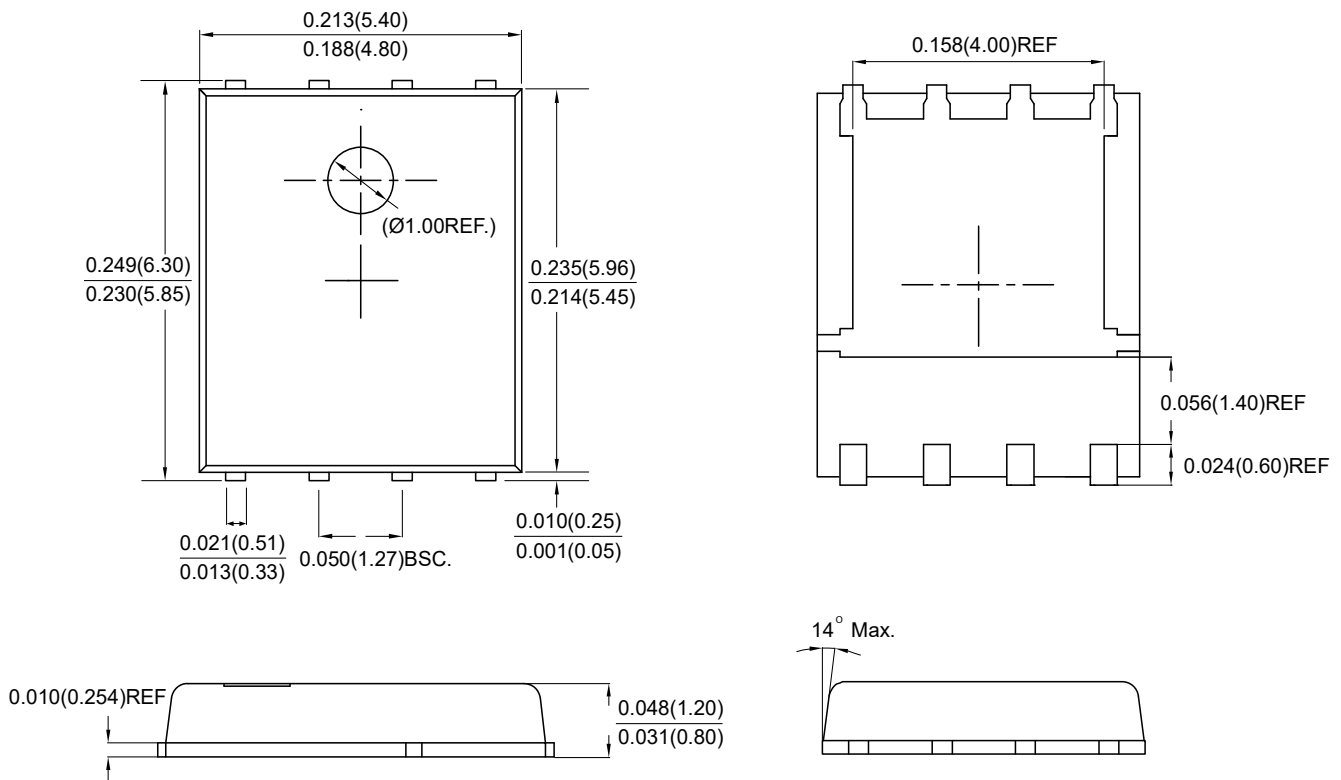


FIG.8-Safe Operating Area



Package Outline Dimensions



PPAK5X6

Dimensions in inches and (millimeters)



## LEGAL DISCLAIMER

- The product is provided “AS IS” without any guarantees or warranty. In association with the product, Eris Technology Corporation, its affiliates, and their directors, officers, employees, agents, successors and assigns (collectively, the “Eris”) makes no warranties of any kind, either express or implied, including but not limited to warranties of merchantability, fitness for a particular purpose, of title, or of non-infringement of third party rights.
- The information in this document and any product described herein are subject to change without notice and should not be construed as a commitment by Eris. Eris assumes no responsibility for any errors that may appear in this document.
- Eris does not assume any liability arising out of the application or use of this document or any product described herein, any Customer or user of this document or products described herein in such applications shall assume all risks of such use and will agree to hold Eris and all the companies whose products are represented on Eris website, harmless against all damages.
- No license, express or implied, by estoppels or otherwise, to any intellectual property is granted by this document or by any conduct of Eris. Product name and markings notes herein may be trademarks of their respective owners.
- Eris does not warrant or accept any liability whatsoever in respect of any products purchased through unauthorized sales channel.
- Should Customers purchase or use Eris products for any unintended or unauthorized application, Customers shall indemnify and hold Eris and its representatives harmless against all claims, damages, expenses, and attorney fees arising out of, directly or indirectly, any claim of personal injury or death associated with such unintended or unauthorized application.
- The official text is written in English and the English version of this document is the only version endorsed by Eris. Any discrepancies or differences created in the translations are not binding and have no legal effect on Eris for compliance or enforcement purposes.