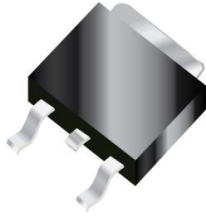




EBRT20E150CD2



Excellent Schottky Barrier Rectifiers



D2-PAK

Primary Characteristics

I_F	20	A
V_{RRM}	150	V
I_{FSM}	150	A
V_F	0.62 ($I_F=5A$ $T_J=125^\circ C$)	V
T_J max	150	$^\circ C$

Features

- Low Forward Voltage Drop
- Excellent High Temperature Stability
- Excellent Barrier Rectifier Technology
- Soft, Fast Switching Capability

Mechanical Data

- Case: D2-PAK
- Case Material: Molded Plastic, UL Flammability Classification Rating 94V-0
- Terminals: Matte Tin Finish annealed over Copper leadframe. Solderable per MIL-STD-202, Method 208
- Weight: 1.43 grams (approximate)

Ordering Information

Part No.	Remark	Package	Packing
EBRT20E150CD2	General	D2-PAK	800 / Reel
EBRT20E150CD2-H	Halogen Free		

Maximum Ratings ($T_A=25^\circ C$ unless otherwise noted)

PARAMETER	SYMBOL	EBRT20E150CD2	UNIT
Maximum repetitive peak reverse voltage	V_{RRM}	150	V
Maximum RMS voltage	V_{RMS}	105	V
Maximum DC blocking voltage	V_{DC}	150	V
Maximum average forward rectified current (Total) (Per Leg)	I_F	20 10	A
Peak forward surge current, 8.3ms single half sine-wave superimposed on rated load	I_{FSM}	150	A
Maximum Instantaneous Forward Voltage $I_F=5A$ @ $25^\circ C$ $I_F=5A$ @ $125^\circ C$ $I_F=10A$ @ $25^\circ C$ $I_F=10A$ @ $125^\circ C$	V_F	0.77 Typ. 0.62 Typ. 0.83 Max. 0.75 Max.	V
Maximum DC Reverse Current @ $T_A=25^\circ C$ at Rated DC Blocking Voltage @ $T_A=125^\circ C$	I_R	0.2 15	mA
Typical Junction Capacitance(NOTE1)	C_j	720	pF
Typical Thermal Resistance	$R_{\theta JC}$	3	$^\circ C/W$
Operating Temperature Range	T_J	-55 to +150	$^\circ C$
Storage Temperature Range	T_{STG}	-55 to +175	$^\circ C$
Marking Code		T20E150CD2 · 20E150CD2	

NOTES:

1. Measured at 1.0MHZ and applied reverse voltage of 4.0V DC



Excellent Schottky Barrier Rectifiers

Rating and Characteristics Curves

FIG. 1-Typical Forward Current Derating Curve

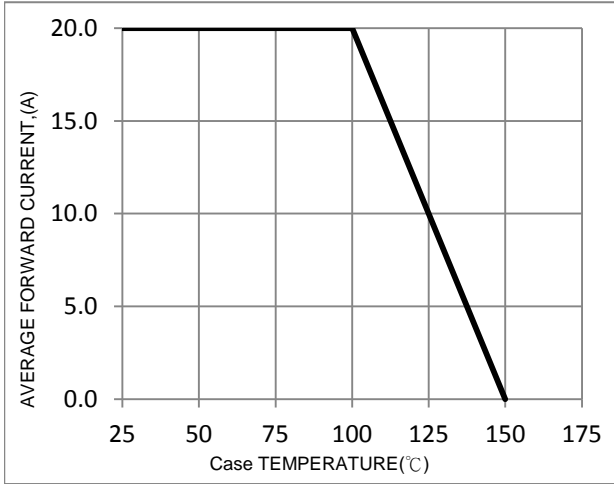


FIG. 2-Typical Forward Characteristics

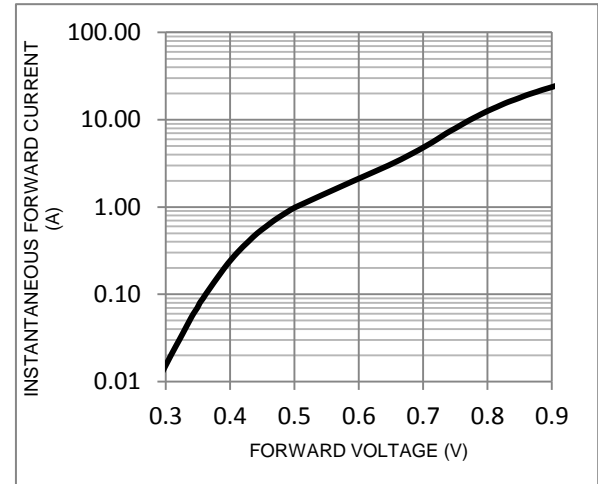


FIG. 3-Maximum Non-Repetitive Forward Surge Current

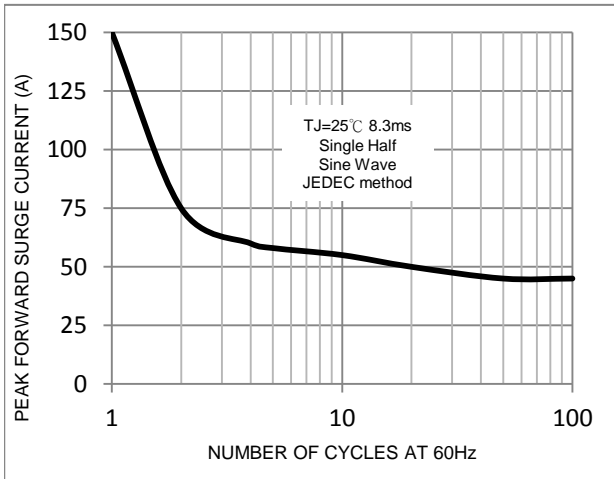


FIG. 4-Typical Reverse Characteristics

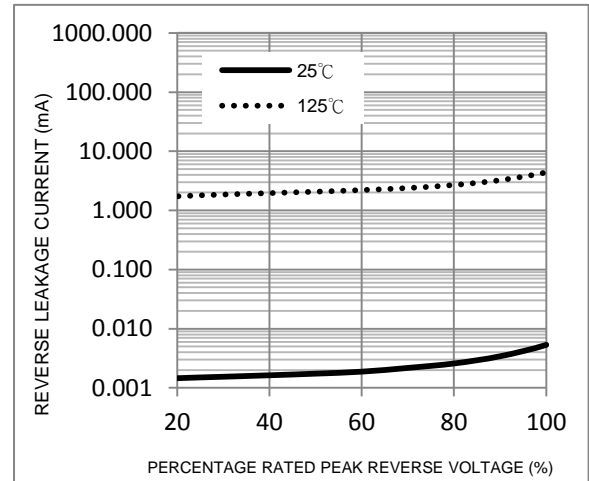
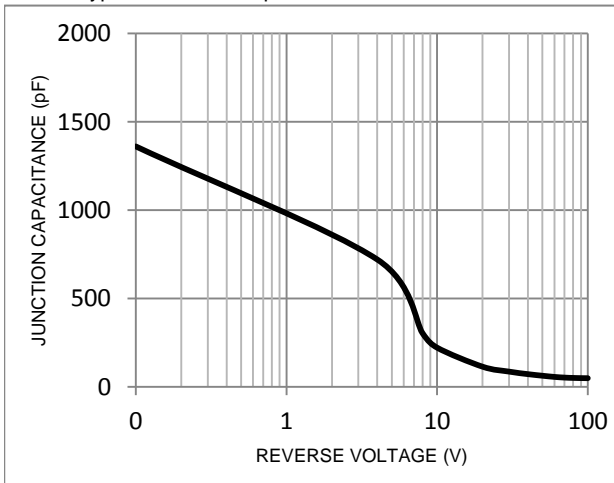


FIG. 5-Typical Junction Capacitance



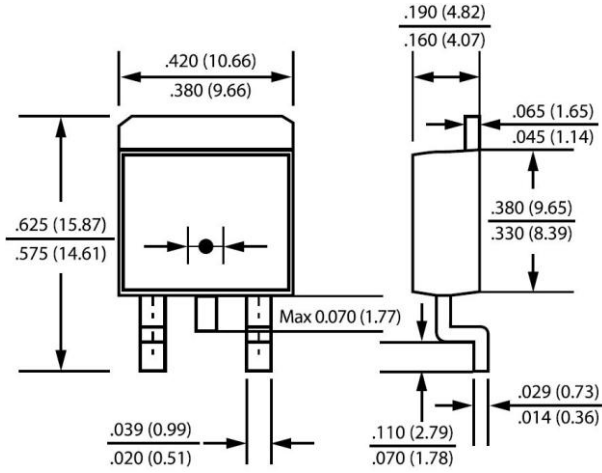


EBRT20E150CD2



Excellent Schottky Barrier Rectifiers

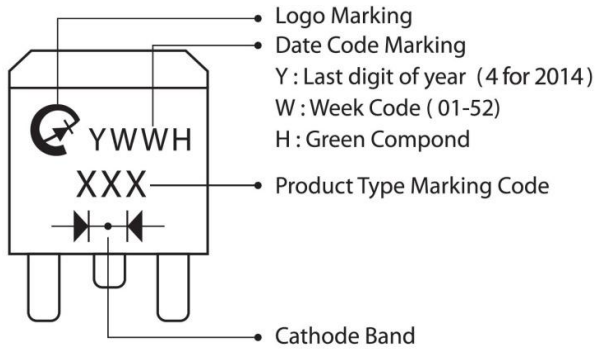
Package Outline Dimensions



D2-PAK

Dimensions in inches and (millimeters)

Marking Information



Suggested Pad Layout

Dimension	Outline	D2PAK (mm)
A		5.08
B		1.10
C		10.80
D		8.30
E		3.50
F		16.90

