



# EBRT15E100D



## Excellent Schottky Barrier Rectifiers



DO-201AD

### Features

- High current capability
- High surge current capability
- Low reverse current
- Component in accordance to RoHS 2002/95/EC

### Ordering Information

Part No.	Package	Packing
EBRT15E100D	DO-201AD	500 / Box

### Device P/N

Part Number	Remark
EBRT15E100D	General
EBRT15E100D-H	Halogen Free

### Primary Characteristics

$I_F$	15	A
$V_{RRM}$	100	V
$I_{FSM}$	150	A
$V_F$	0.65	V
$T_J$ max	150	°C

### Mechanical Data

- Cases: DO-201AD
- Case Material: Molded Plastic. UL Flammability Classification Rating 94V-0
- Terminals: Lead free Plating (Tin Finish)  
Solderable per MIL-STD-202, Method 208
- Polarity: Cathode Band
- Weight: 1.071 grams (approximate)

### Maximum Ratings (TA=25°C unless otherwise noted)

PARAMETER	SYMBOL	EBRT15E100D	UNIT
Maximum repetitive peak reverse voltage	$V_{RRM}$	100	V
Maximum RMS voltage	$V_{RMS}$	70	V
Maximum DC blocking voltage	$V_{DC}$	100	V
Maximum average forward rectified current	$I_F$	15.0	A
Peak forward surge current, 8.3ms single half sine-wave superimposed on rated load	$I_{FSM}$	150.0	A
Maximum Instantaneous Forward Voltage IF=5A @ 25°C IF=15A @ 25°C	$V_F$	0.47 Typ. 0.65 Max.	V
Maximum DC Reverse Current @ TA=25°C at Rated DC Blocking Voltage @ TA=125°C	$I_R$	0.2 20	mA
Typical Junction Capacitance(NOTE1)	$C_j$	1390	pF
Typical Thermal Resistance	$R_{\theta JC}$	30	°C/W
Operating Temperature Range	$T_J$	-55 to +150	°C
Storage Temperature Range	$T_{STG}$	-55 to +150	°C
Marking Code		T15E100D · 15E100D	

### NOTES:

1. Measured at 1.0MHZ and applied reverse voltage of 4.0V DC



## Excellent Schottky Barrier Rectifiers

### Rating and Characteristics Curves

FIG. 1-Typical Forward Current Derating Curve

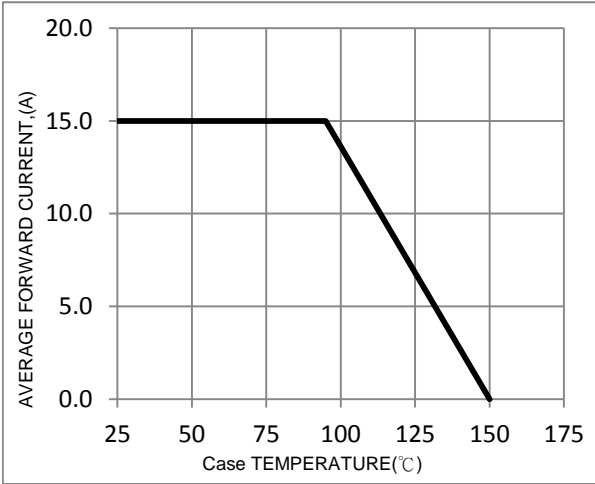


FIG. 2-Typical Forward Characteristics

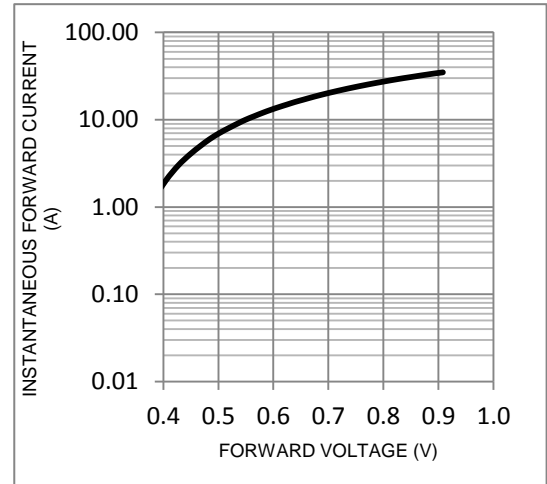


FIG. 3-Maximum Non-Repetitive Forward Surge Current

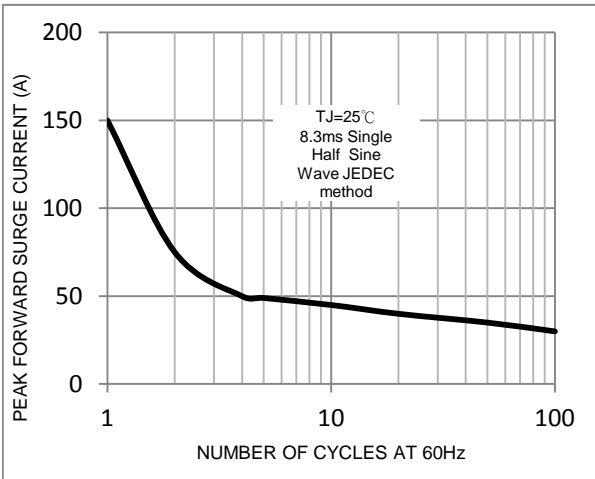


FIG. 4-Typical Reverse Characteristics

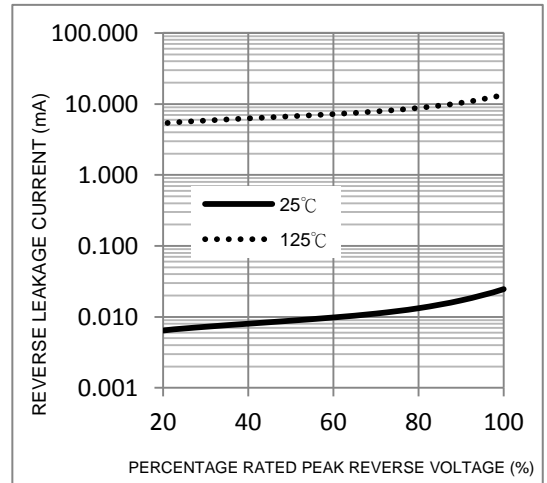
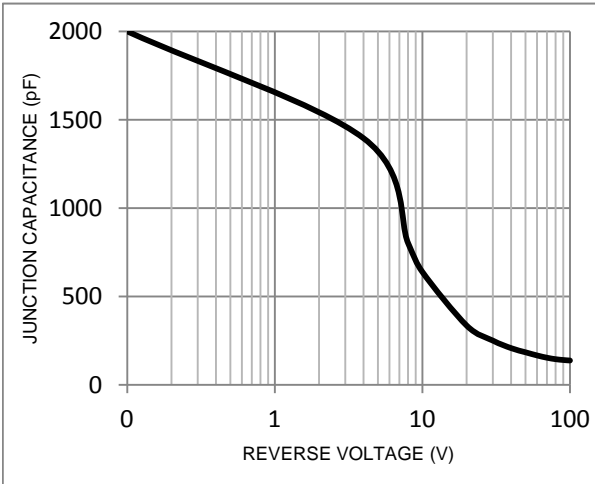
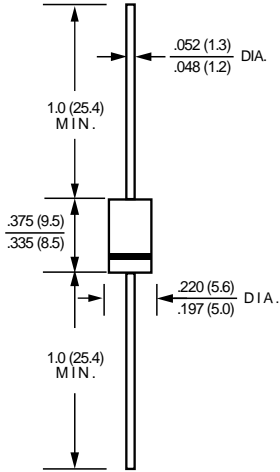


FIG. 5-Typical Junction Capacitance





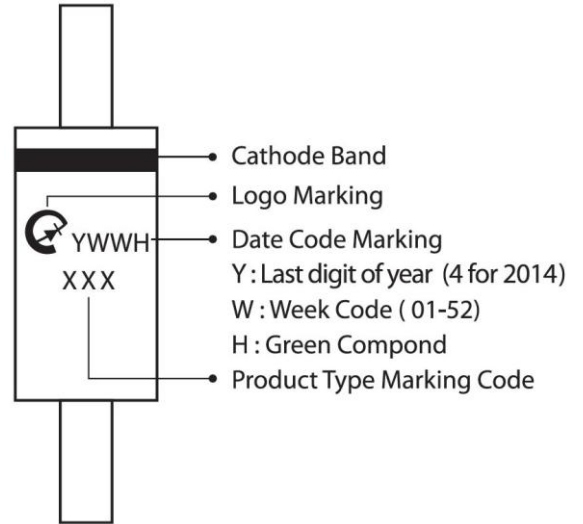
**Package Outline Dimensions**



**DO-201AD**

Dimensions in inches and (millimeters)

**Marking Information**



**Bulk Packing**

Package	Inner Pack	Inner Box (EA)	Inner Box (mm)	Carton (EA)	Carton Size (mm)	Gross Weight (Kg)-Approx.
DO-201AD(DO-27)	Box	500	300x77x39	12000	475x220x260	16