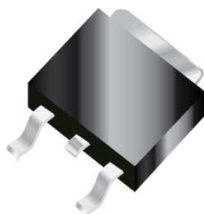




EBRP20L60CD2



Excellent Schottky Barrier Rectifiers



D2-PAK

Primary Characteristics		
I_F	20	A
V_{RRM}	60	V
I_{FSM}	150	A
V_F	0.63	V
$T_J \text{ max}$	150	°C

Features
<ul style="list-style-type: none"> • Low Forward Voltage Drop • Excellent High Temperature Stability • Excellent Barrier Rectifier Technology • Soft, Fast Switching Capability

Mechanical Data
<ul style="list-style-type: none"> • Case: D2-PAK • Case Material: Molded Plastic, UL Flammability Classification Rating 94V-0 • Terminals: Matte Tin Finish annealed over Copper leadframe.Solderable per MIL-STD-202, Method 208 • Weight: 1.43 grams (approximate)

Ordering Information			
Part No.	Remark	Package	Packing
EBRP20L60CD2	General	D2-PAK	800 / Reel
EBRP20L60CD2-H	Halogen Free		
EBRP20L60CD2-Q	AEC-Q101 qualified		

Maximum Ratings (TA=25°C unless otherwise noted)			
PARAMETER	SYMBOL	EBRP20L60CD2	UNIT
Maximum repetitive peak reverse voltage	V_{RRM}	60	V
Maximum RMS voltage	V_{RMS}	42	V
Maximum DC blocking voltage	V_{DC}	60	V
Maximum average forward rectified current (Total) (Per Leg)	I_F	20 10	A
Peak forward surge current, 8.3ms single half sine-wave superimposed on rated load	I_{FSM}	150	A
Maximum Instantaneous Forward Voltage $I_F=3A @ 25^\circ C$ $I_F=10A @ 25^\circ C$	V_F	0.40 Typ. 0.63 Max.	V
Maximum DC Reverse Current @ TA=25°C at Rated DC Blocking Voltage @ TA=125°C	I_R	0.5 20	mA
Typical Junction Capacitance(NOTE1)	C_j	280	pF
Typical Thermal Resistance	$R_{\theta JC}$	3	°C/W
Operating Temperature Range	T_J	-55 to +150	°C
Storage Temperature Range	T_{STG}	-55 to +175	°C
Marking Code		P20L60CD2 · 20L60CD2	

NOTES:

1.Measured at 1.0MHZ and applied reverse voltage of 4.0V DC



Excellent Schottky Barrier Rectifiers

Rating and Characteristics Curves

FIG. 1-Typical Forward Current Derating Curve

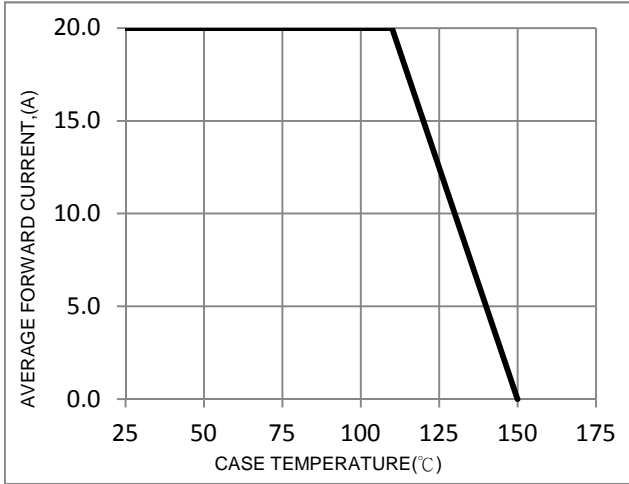


FIG. 2-Typical Forward Characteristics

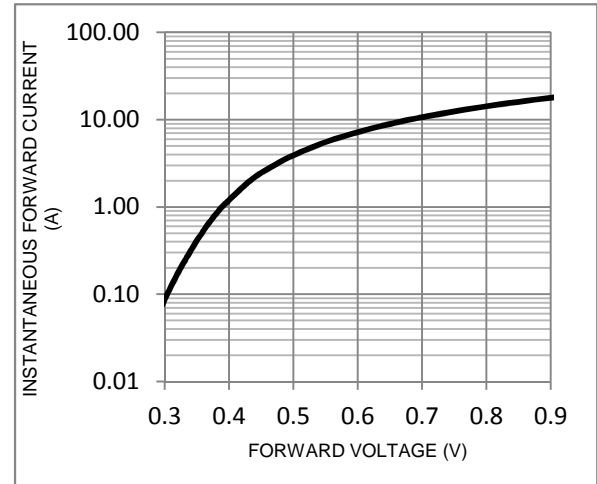


FIG. 3-Maximum Non-Repetitive Forward Surge Current

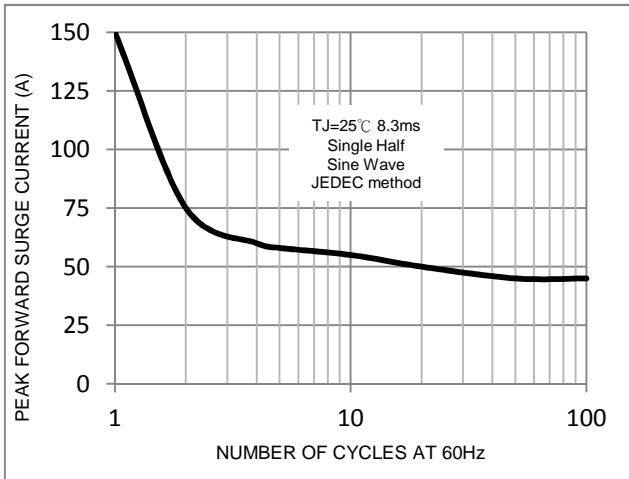


FIG. 4-Typical Reverse Characteristics

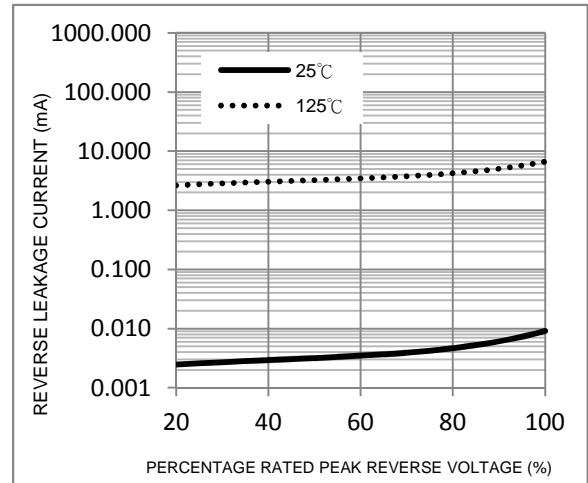
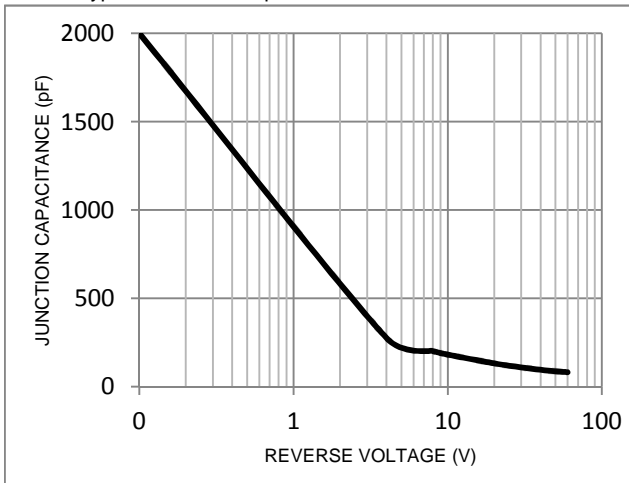
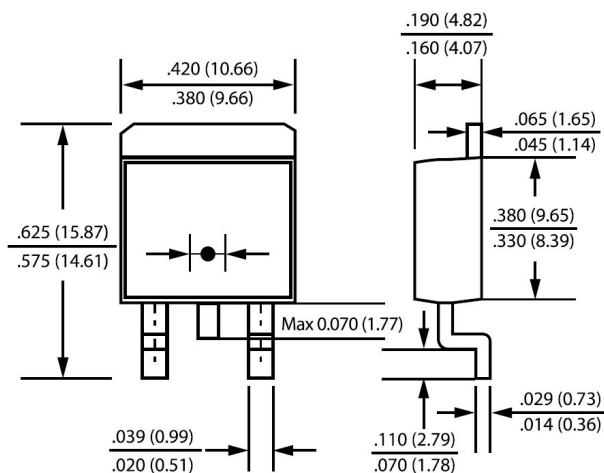


FIG. 5-Typical Junction Capacitance





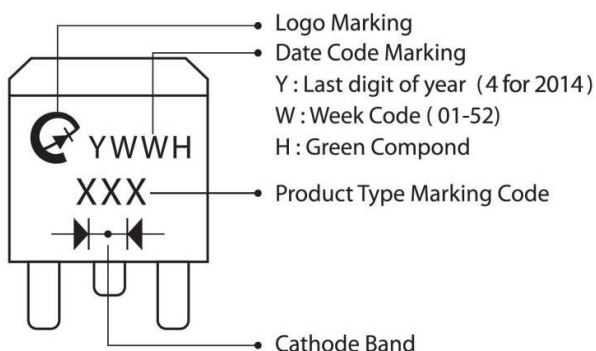
Package Outline Dimensions



D2-PAK

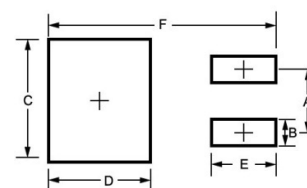
Dimensions in inches and (millimeters)

Marking Information



Suggested Pad Layout

Dimension	Outline	D2PAK (mm)
A		5.08
B		1.10
C		10.41
D		3.50
E		7.01
F		15.99



Tape & Reel Specification

Item	Symbol	Dimension
		millimeters
Carrier width	A	10.7 ±0.10
Carrier length	B	16.3 ±0.10
Carrier depth	C	5.0 ±0.10
Sprocket hole	d	1.55 ±0.05
Reel outside diameter	D	330 ±1.0
Feed hole width	D0	13.5 ±0.50
Reel inner diameter	D1	100 ±0.50
Sprocket hole position	E	1.75 ±0.10
Punch hole position	F	11.5 ±0.05
Punch hole pitch	P	16.0 ±0.05
Sprocket hole pitch	P0	4.0 ±0.10
Embossment center	P1	2.0 ±0.05
Overall tape thickness	T	0.3 ±0.02
Tape width	W	24±0.3
Reel width	W1	24.2±1.0

