



EBRP10L150T



Schottky Barrier Rectifiers



TO-277



Primary Characteristics

I_F	10	A
V_{RRM}	150	V
I_{FSM}	180	A
V_F	0.83	V
$T_J \text{ max}$	150	°C

Features

- Low Forward Voltage Drop
- Reliable High Temperature Operation
- Softest, fast switching capability

Mechanical Data

- Case : TO-277, molded plastic
- Molder Plastic : UL Flammability Classification Rating 94V-0
- Mounting Position : Any
- Lead Free : For RoHS / Lead Free Version

Ordering Information

Part No.	Remark	Package	Packing
EBRP10L150T	General	TO-277	5000 / Tape & Reel
EBRP10L150T-H	Halogen Free		

Maximum Ratings (TA=25°C unless otherwise noted)

Parameter	Symbol	EBRP10L150T	Unit
Maximum Repetitive Peak Reverse Voltage	V_{RRM}	150	V
Maximum RMS Voltage	V_{RMS}	105	
Maximum DC Blocking Voltage	V_{DC}	150	
Average Rectified Output Current	$I_{F(AV)}$	10	A
Non-Repetitive Peak Forward Surge 8.3ms Single Half Sine-Wave Superimposed on rated load	I_{FSM}	180	A
Forward Voltage Drop IF=5A@TA=25°C IF=10A@TA=25°C IF=12A@TA=25°C	V_{FM}	0.73 Typ. 0.83 Max. 0.81 Typ.	V
Peak Reverse Current @Tj=25°C At Rated DC Blocking Voltage @Tj=125°C	I_R	0.1 10	mA
Typical Thermal Resistance	$R_{\theta JC}$	30	°C/W
Operating and Storage Temperature Range	T_J, T_{STG}	-55 to +150	°C
Marking Code		P10L150、P10L150T	



Rating and Characteristics Curves

FIG. 1-Forward Current Derating Curve

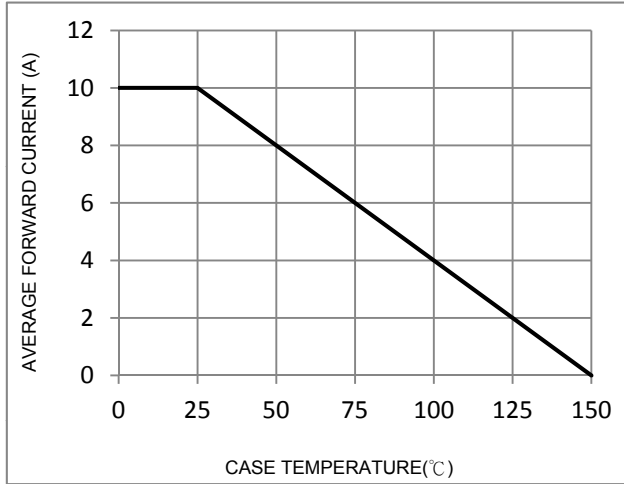


FIG. 2-Typical Forward Characteristics

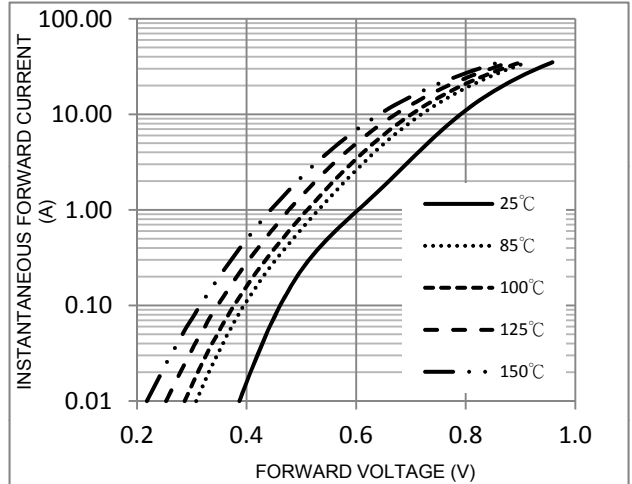


FIG. 3-Maximum Peak Forward Surge Current

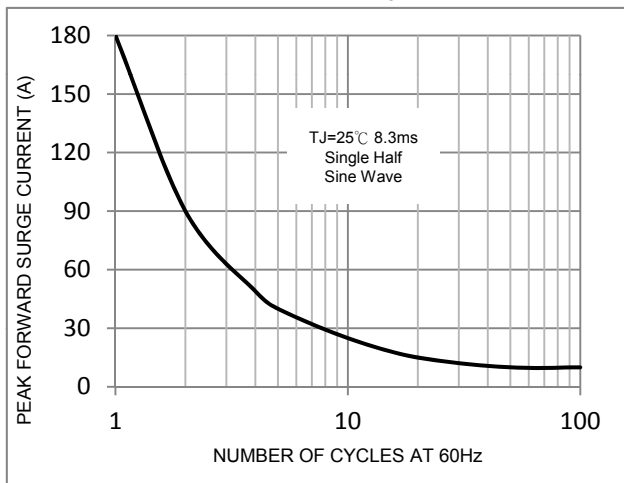


FIG. 4-Typical Reverse Characteristics

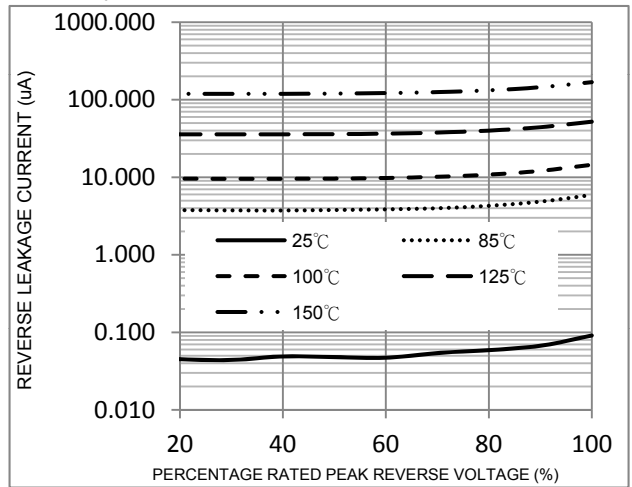
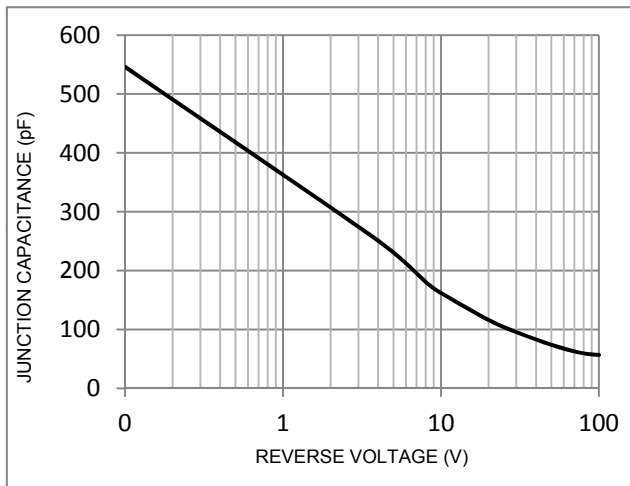
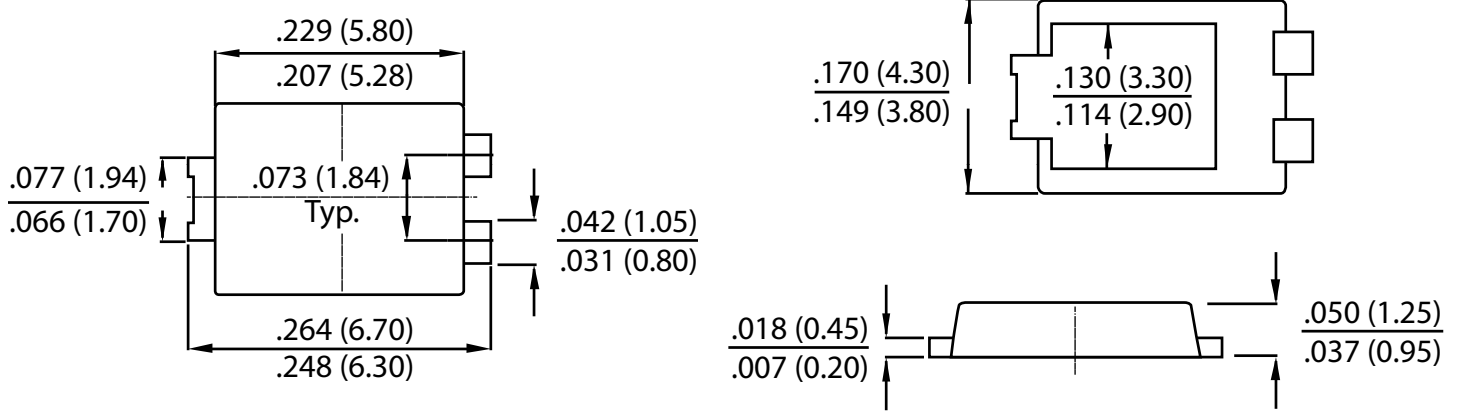


FIG. 5-Typical Junction Capacitance





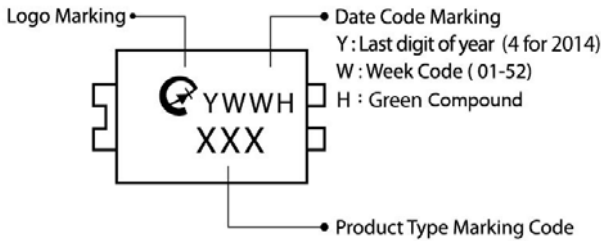
Package Outline Dimensions



TO-277

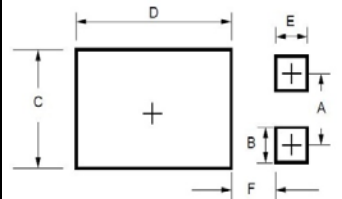
Dimensions in inches and (millimeters)

Marking Information



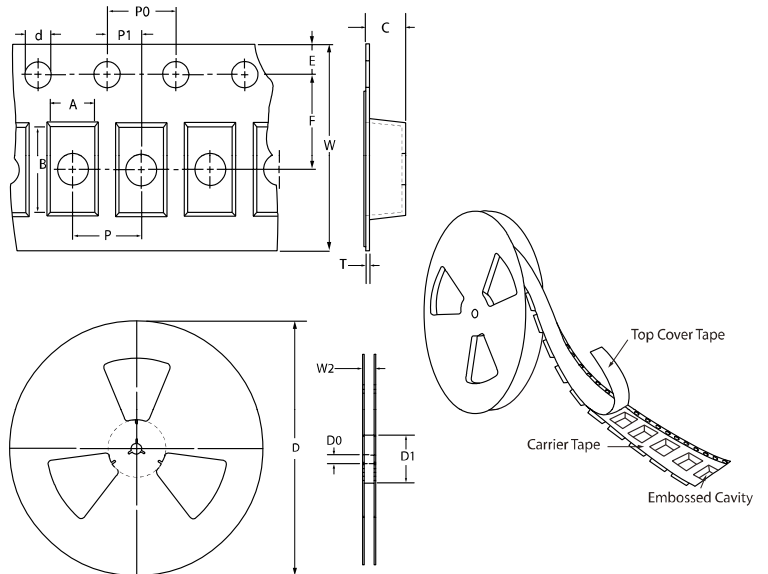
Suggested Pad Layout

Outline Dimension	TO-277 (mm)
A	1.94
B	1.40
C	3.40
D	4.90
E	1.40
F	1.40



Tape & Reel Specification

Item	Symbol	TO-277 (mm)
Carrier width	A	4.5 (max)
Carrier length	B	7.1 (max)
Carrier depth	C	1.4 ± 0.1
Sprocket hole	d	1.50 ± 0.1
Reel outside diameter	D	330 ± 2.0
Feed hole diameter	D0	13.5 ± 1.0
Reel inner diameter	D1	50 (min)
Sprocket hole position	E	1.75 ± 0.1
Punch hole position	F	6.5 ± 1.1
Sprocket hole pitch	P	8.0 ± 0.1
Sprocket hole pitch	P0	4.0 ± 0.1
Embossment center	P1	2.0 ± 0.1
Overall tape thickness	T	0.6 (max)
Tape width	W	14 ± 2.2
Reel width	W2	24.5 (max)





LEGAL DISCLAIMER

- The product is provided “AS IS” without any guarantees or warranty. In association with the product, Eris Technology Corporation, its affiliates, and their directors, officers, employees, agents, successors and assigns (collectively, the “Eris”) makes no warranties of any kind, either express or implied, including but not limited to warranties of merchantability, fitness for a particular purpose, of title, or of non-infringement of third party rights.
- The information in this document and any product described herein are subject to change without notice and should not be construed as a commitment by Eris. Eris assumes no responsibility for any errors that may appear in this document.
- Eris does not assume any liability arising out of the application or use of this document or any product described herein, any Customer or user of this document or products described herein in such applications shall assume all risks of such use and will agree to hold Eris and all the companies whose products are represented on Eris website, harmless against all damages.
- No license, express or implied, by estoppels or otherwise, to any intellectual property is granted by this document or by any conduct of Eris. Product name and markings notes herein may be trademarks of their respective owners.
- Eris does not warrant or accept any liability whatsoever in respect of any products purchased through unauthorized sales channel.
- Should Customers purchase or use Eris products for any unintended or unauthorized application, Customers shall indemnify and hold Eris and its representatives harmless against all claims, damages, expenses, and attorney fees arising out of, directly or indirectly, any claim of personal injury or death associated with such unintended or unauthorized application.
- The official text is written in English and the English version of this document is the only version endorsed by Eris. Any discrepancies or differences created in the translations are not binding and have no legal effect on Eris for compliance or enforcement purposes.