

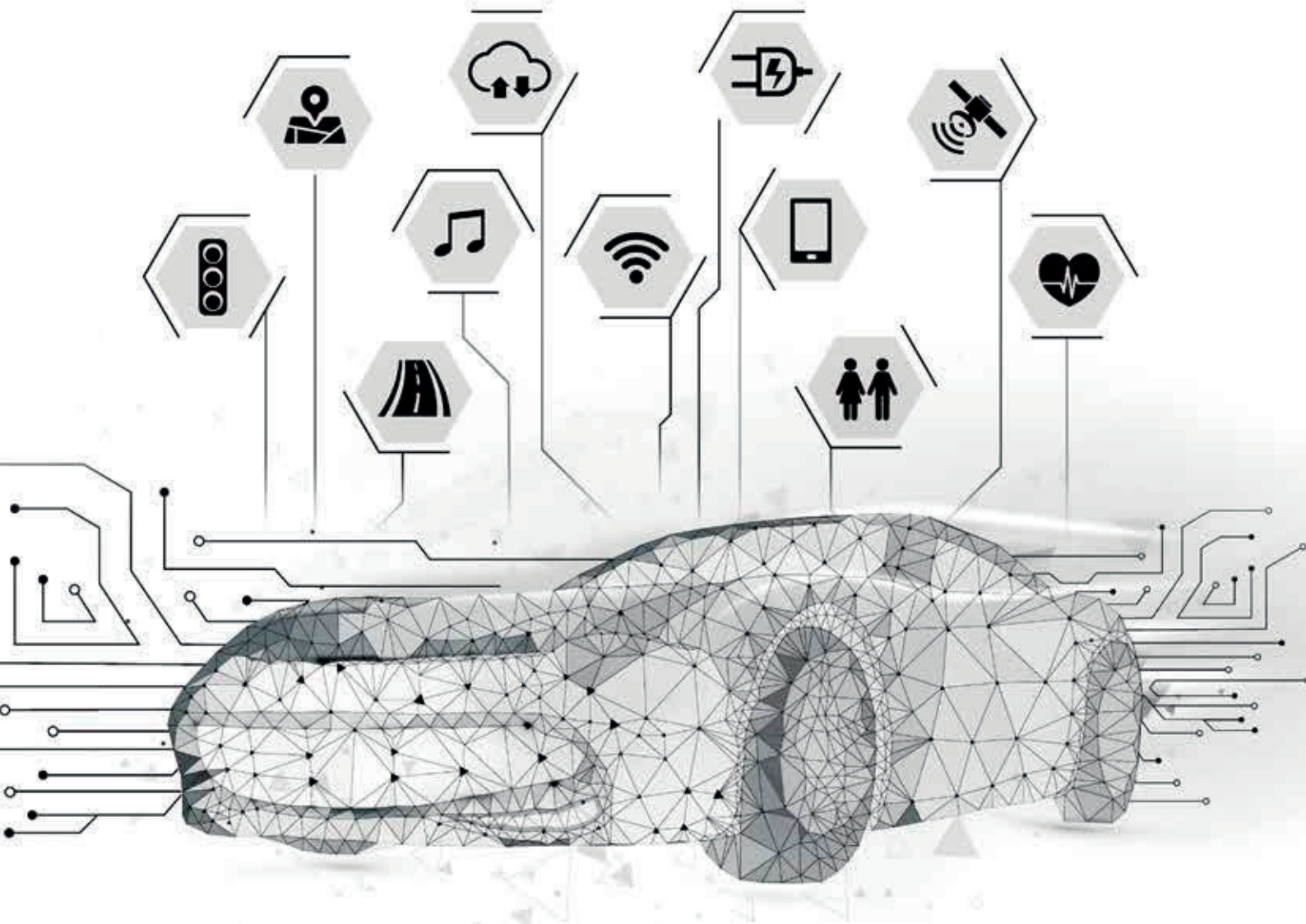
Represented by:

endrich
components of life

www.atec-group.com



SMD INDUCTIVE COMPONENTS for AUTOMOTIVE



ABC-ATEC Electronics Group
ABC Taiwan Electronics Corp.

SMD inductive components for Automotive

Figure	Type	Installation space	Height	Inductance	Operating temp. (Temp. rise included)	RDC	Rated Current
	ACC3225-2	3.2 x 2.5	2.2	0.1 μ H ~ 100 μ H	-40°C ~ +150°C	50 m Ω ~ 9 Ω	2.8 A ~ 0.15 A
	ACC4532-2	4.5 x 3.2	3.2	1.0 μ H ~ 1.0 mH	-40°C ~ +150°C	100 m Ω ~ 40 Ω	2.25 A ~ 0.08 A
	SWI0402CT-A1	1.0 x 0.55	0.5	1.0 nH ~ 120 nH	-40°C ~ +125°C	45 m Ω ~ 2.66 Ω	1.36 A ~ 0.11 A
	SWI0603CS-A1	1.65 x 1.15	0.9	1.6 nH ~ 390 nH	-40°C ~ +125°C	30 m Ω ~ 465 Ω	0.7 A ~ 0.13 A
	AER0403-L	\varnothing 4.5 x 4.0	3.2	1.0 μ H ~ 68 μ H	-40°C ~ +150°C	48 m Ω ~ 1.028 Ω	2.7 A ~ 0.4 A
	AER0604-L	\varnothing 5.8 x 5.2	4.5	1.2 μ H ~ 220 μ H	-40°C ~ +125°C	20 m Ω ~ 1.57 Ω	5.3 A ~ 0.47 A
	AER0805-L	\varnothing 7.8 x 7.0	5	1.5 μ H ~ 470 μ H	-40°C ~ +125°C	20 m Ω ~ 1.7 Ω	5.8 A ~ 0.4 A
	AER1006-L	\varnothing 10.0 x 9.0	5.4	1.5 μ H ~ 820 μ H	-40°C ~ +150°C	18 m Ω ~ 2.55 Ω	7.2 A ~ 0.45 A
	ASB7030-L	7.0 x 7.0	3	1.0 μ H ~ 680 μ H	-40°C ~ +125°C	14 m Ω ~ 2.35 Ω	3.0 A ~ 0.18 A
	ASB7045-L	7.0 x 7.0	4.5	1.2 μ H ~ 1 mH	-40°C ~ +125°C	4 m Ω ~ 1.8 Ω	3.8 A ~ 0.2 A
	ASB1305-L	12.7 x 12.7	4.8	2.5 μ H ~ 1 mH	-40°C ~ +125°C	2.3 m Ω ~ 168 m Ω	7.2 A ~ 0.46 A
	ASB1806-L	14 x 18.2	6.6	1.0 μ H ~ 1 mH	-40°C ~ +125°C	22 m Ω ~ 4.35 Ω	10 A ~ 0.5 A
	ASB2207-L	22 x 15	7	0.8 μ H ~ 100 μ H	-40°C ~ +125°C	22 m Ω ~ 4 Ω	16.0 A ~ 2.0 A
		TPI4018CT-A1	4.0 x 4.0	1.88	0.82 μ H ~ 220 μ H	-40°C ~ +125°C	16 m Ω ~ 2.96 Ω
TPI6045CT-A1		6.0 x 6.0	4.5	1.0 μ H ~ 330 μ H	-40°C ~ +125°C	10 m Ω ~ 1.45 Ω	6.5 A ~ 0.4 A
ARN8040-L		8.15 x 7.9	4	0.5 μ H ~ 100 μ H	-40°C ~ +125°C	5.5 m Ω ~ 310 m Ω	10.0 A ~ 1.0 A
	ABF0703-L	7.6 x 7.6	3.4	8.2 μ H ~ 330 μ H	-40°C ~ +125°C	306 m Ω ~ 8.25 Ω	2.19 A ~ 0.42 A
	ABS0703-S	7.3 x 7.3	3.5	10 μ H ~ 1.0 mH	-40°C ~ +125°C	72 m Ω ~ 5.8 Ω	1.85 A ~ 0.17 A
	ABS0704-S	7.3 x 7.3	4.5	1.0 μ H ~ 1.0 mH	-40°C ~ +125°C	13 m Ω ~ 4.1 Ω	5.0 A ~ 0.2 A
	AQS3818-L	3.8 x 3.8	1.8	1.0 μ H ~ 100 μ H	-40°C ~ +150°C	37 m Ω ~ 2.6 Ω	2.1 A ~ 0.2 A
	AQS4818-L	4.8 x 4.8	1.8	1.0 μ H ~ 47 μ H	-40°C ~ +125°C	25 m Ω ~ 630 m Ω	3.6 A ~ 0.47 A
	AQS4828-L	4.8 x 4.8	2.8	1.2 μ H ~ 220 μ H	-40°C ~ +125°C	24 m Ω ~ 1.25 Ω	3.0 A ~ 0.24 A
	AQS5818-L	5.8 x 5.8	1.8	1.5 μ H ~ 220 μ H	-40°C ~ +125°C	31 m Ω ~ 4.08 Ω	3.0 A ~ 0.24 A
	AQS5828-L	5.8 x 5.8	2.8	2.6 μ H ~ 680 μ H	-40°C ~ +125°C	30 m Ω ~ 4.8 Ω	3.15 A ~ 0.21 A
	AQS6822-L	6.8 x 6.8	2.3	1.0 μ H ~ 1.0 mH	-40°C ~ +125°C	19 m Ω ~ 6.85 Ω	4.2 A ~ 0.13 A
	ASF1258-F	12.5 x 12.5	6	0.47 μ H ~ 1.0 mH	-40°C ~ +125°C	21.2 m Ω ~ 6.782 Ω	8.8 A ~ 0.28 A
ASF1278-F	12.5 x 12.5	8	0.47 μ H ~ 1.0 mH	-40°C ~ +125°C	21.6 m Ω ~ 7.202 Ω	8.9 A ~ 0.3 A	

SMD inductive components for Automotive

Figure	Type	Installation space	Height	Inductance	Operating temp. (Temp. rise included)	RDC	Rated Current
	ASS1210-F	12 x 12	10	1.0 μ H ~ 1.0 mH	-40°C ~ +125°C	6 m Ω ~ 1.65 Ω	11 A ~ 0.7 A
	ASS1240-L	12.5 x 12.5	4	10 μ H ~ 1.0 mH	-40°C ~ +125°C	32 m Ω ~ 3 Ω	4.0 A ~ 0.4 A
	ASS1260-F	12.5 x 12.5	6	1.0 μ H ~ 1.0 mH	-40°C ~ +125°C	7.8 m Ω ~ 1.7 Ω	9.4 A ~ 0.6 A
	ASS1280-F	12.5 x 12.5	7.5	3.9 μ H ~ 1.2 mH	-40°C ~ +125°C	14 m Ω ~ 2.2 Ω	8.4 A ~ 0.55 A
	ASS1806-L	14.0 x 18.2	6.8	10 μ H ~ 1.0 mH	-40°C ~ +125°C	40 m Ω ~ 2.45 Ω	4.0 A ~ 0.45 A
	ASU3028-L	3.3 x 3.5	2.8	10.0 μ H ~ 47.0 μ H	-40°C ~ +125°C	200 m Ω ~ 1 Ω	0.72 A ~ 0.32 A
	ASU5028-L	5.2 x 5.2	2.8	1.2 μ H ~ 100 μ H	-40°C ~ +125°C	22 m Ω ~ 0.8 Ω	3.4 A ~ 0.42 A
	ASU6025-F	6.2 x 6.5	2.5	1.2 μ H ~ 220 μ H	-40°C ~ +125°C	19 m Ω ~ 1.25 Ω	3.2 A ~ 0.24 A
	ASU8028-F	8.0 x 8.0	2.8	2.5 μ H ~ 100 μ H	-40°C ~ +125°C	18 m Ω ~ 0.5 Ω	4.2 A ~ 0.7 A
	ASU8045-F	8.0 x 8.0	4.5	3.5 μ H ~ 100 μ H	-40°C ~ +125°C	25 m Ω ~ 0.5 Ω	5.0 A ~ 0.92 A
	ASU8058-F	8.0 x 8.0	5.8	3.9 μ H ~ 100 μ H	-40°C ~ +125°C	16 m Ω ~ 0.16 Ω	4.5 A ~ 0.9 A
	ASU1028-F	10 x 10	2.8	1.0 μ H ~ 150 μ H	-40°C ~ +125°C	6.5 m Ω ~ 0.68 Ω	7.0 A ~ 0.65 A
	ASU1030-F	10 x 10	2.8	3.5 μ H ~ 150 μ H	-40°C ~ +125°C	27 m Ω ~ 0.84 Ω	5.0 A ~ 0.84 A
	ASU1038-F	10 x 10	3.8	1.5 μ H ~ 330 μ H	-40°C ~ +125°C	7.5 m Ω ~ 1 Ω	7.0 A ~ 0.52 A
	ASU1048-F	10 x 10	4.8	1.5 μ H ~ 330 μ H	-40°C ~ +125°C	5.8 m Ω ~ 0.64 Ω	7.0 A ~ 0.52 A
	ASU1050-F	10 x 10	4.8	4.7 μ H ~ 1.0 mH	-40°C ~ +125°C	19 m Ω ~ 2.76 Ω	5.1 A ~ 0.4 A
	MHE0630-F	7.1 x 6.6	3	0.1 μ H ~ 10 μ H	-55°C ~ +155°C	1.7 m Ω ~ 0.105 Ω	34 A ~ 4.0 A
	MHE1040-F	11.5 x 10	4	1.0 μ H ~ 47 μ H	-55°C ~ +155°C	3.3 m Ω ~ 0.145 Ω	18 A ~ 3.5 A
	MHS0735-E	7.2 x 7.2	3.5	0.1 μ H ~ 10 μ H	-55°C ~ +125°C	1.7 m Ω ~ 0.105 Ω	34 A ~ 4.0 A
	MQS3228-L	3.3 x 3.3	2.8	10 μ H ~ 100 μ H	-40°C ~ +150°C	200 m Ω ~ 2.55 Ω	0.8 A ~ 0.24 A
	MQS5228-L	5.2 x 5.2	2.8	1.2 μ H ~ 1.0 mH	-40°C ~ +150°C	22 m Ω ~ 8.7 Ω	3.9 A ~ 0.15 A
	MQS6828-L	6.8 x 6.8	2.8	2.5 μ H ~ 1.0 mH	-40°C ~ +150°C	30 m Ω ~ 4.48 Ω	3.4 A ~ 0.17 A
SMD Line Filter							
	AQF7035-S	7.0 x 6.0	3.5	225 Ω ~ 1800 Ω	-40°C ~ +125°C	10 m Ω ~ 72 m Ω	5.0 A ~ 1.2 A
	AQF9045-S	9.0 x 7.0	4.5	500 Ω ~ 500 Ω	-40°C ~ +125°C	10 m Ω ~ 10 m Ω	5.0 A ~ 5.0 A
	AQF1260-S	12 x 11	6	500 Ω ~ 750 Ω	-40°C ~ +125°C	6 m Ω ~ 14 m Ω	8 A ~ 6 A
	MSF3225-E	3.2 x 2.5	2.5	100 μ H ~ 100 μ H	-40°C ~ +125°C	3.5 Ω ~ 3.5 Ω	0.1 A ~ 0.1 A
	ASF4532-E	4.5 x 3.2	3	200 μ H ~ 200 μ H	-40°C ~ +105°C	4.1 Ω ~ 4.5 Ω	0.11 A ~ 0.11 A
	ASF4532-C	4.5 x 3.2	3	11 μ H ~ 100 μ H	-55°C ~ +150°C	0.5 Ω ~ 1.5 Ω	0.36 A ~ 0.2 A
	ASF0905-L	9.2 x 6.0	5	10 μ H ~ 6500 μ H	-40°C ~ +105°C	3.5 Ω ~ 3.5 Ω	1.6 A ~ 0.3 A



ABC-ATEC Electronics Group

Headquarters:

ABC TAIWAN ELECTRONICS CORP.

No. 98, Ln. 298, Huandong Rd, Yangmei, 32665 Taoyuan, Taiwan
Tel: 886-3-478-8188
Fax: 886-3-475-5503
E-mail: abcsa@abctwn.com.tw

Yangmei I Factory:

No. 422, Sec. 1, Yang-fu Rd., Yangmei, 32662 Taoyuan, Taiwan
Tel: 886-3-478-8188
Fax: 886-3-475-5503
E-mail: abcsa@abctwn.com.tw

Oversea Subsidiary:

ABC America

3240 Scott Blvd.Santa Clara, CA 95054 USA
Office Tel: 408-207-0407

Oversea Factory:

GUANGZHOU ABC ELECTRONICS CORP.

No. 25, Shihua Rd., Shanmen Village, Hualong Town, Panyu Area,
Guangzhou, Guangdong 511434, China
Tel: 86-20-8475-6229
Fax: 86-20-8475-6937

ABC ELECTRONICS (SHANGHAI) CORP.

No. 8130, Jinda Rd., Qixian Industrial District, Fengxian,
Shanghai 201403, China
Tel: 86-21-5757-7870
Fax: 86-21-5757-8468

AOBA TECHNOLOGY(M) SDN. BHD

No.5, Jalan BS 7/7, Off Jalan Cempaka, Seksyen 9, Taman Bukit
Serdang, 43300, Seri Kembangan, Selangor, Malaysia
Tel : 60-3-8942-2111
Fax: 60-3-8942-5888



2020.07

